

MANITOU

MC 40/50 Powershift

Specialists in yard handling

- Capability 4000 kg and 5000 kg



MC 40/50 : specialists in yard handling

The MC 4 and 5 tonne trucks from the MANITOU range are designed for handling heavy, long and bulky loads outside on uneven ground.

The MCs 40/50 are powerful, fast and effective trucks, with a 1004.42 4-cylinder direct injection Perkins conventional engine which develops 80 hp/60 kW at a nominal engine speed of 2200 rpm, and with torque converter transmission that can adapt to various work modes (travelling, loading or unloading, stacking etc.)

- **Fast and flexible working**

The new Powershift gearbox with the EGS electronic gear selector optimises cycle time.

There is progressive gear change carried out under torque for fast operation.

Switching through the gears is kept flexible by the EGS system which automatically adjusts the engine speed in accordance with the gear selected.

For yard work the operator has a slow approach pedal and a differential lock with electro-hydraulic control.



- **Enhanced stability**



Large diameter wheels combined with high ground clearance allow obstacles to be cleared (rails, steep slopes, pot-holes etc) in complete safety for the load and for the driver.



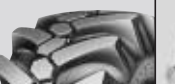




The MCs are remarkable for handling bulk goods because they have exceptional tearout. In addition, they are fitted with a steering axle with integral cylinder giving an exceptional steering lock.

The good distribution of weight on each axle combined with a wide gauge guarantee stability on uneven ground.

Mast MC 40/MC 50 Powershift

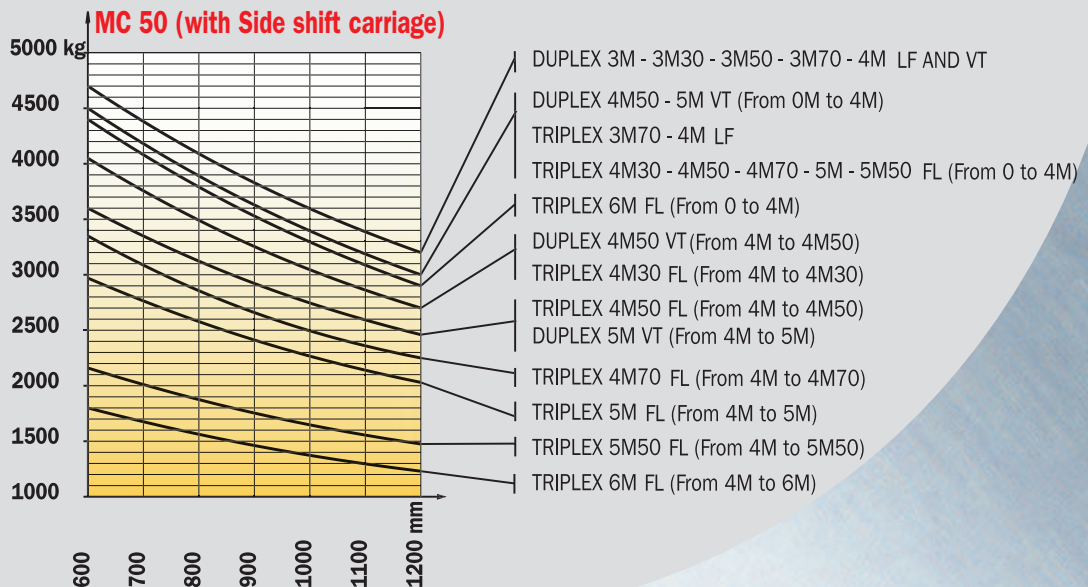
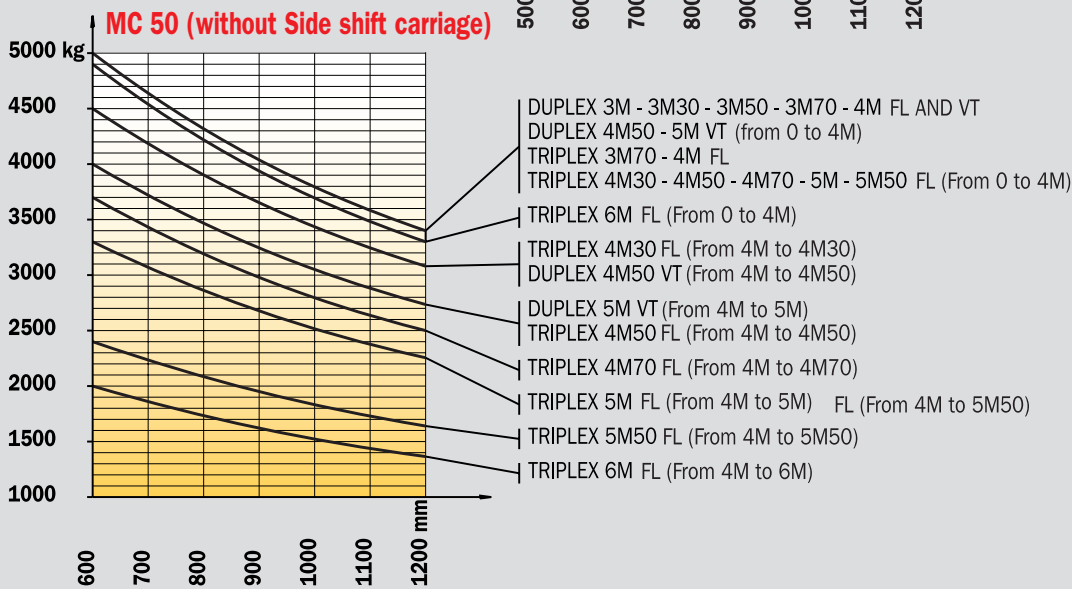
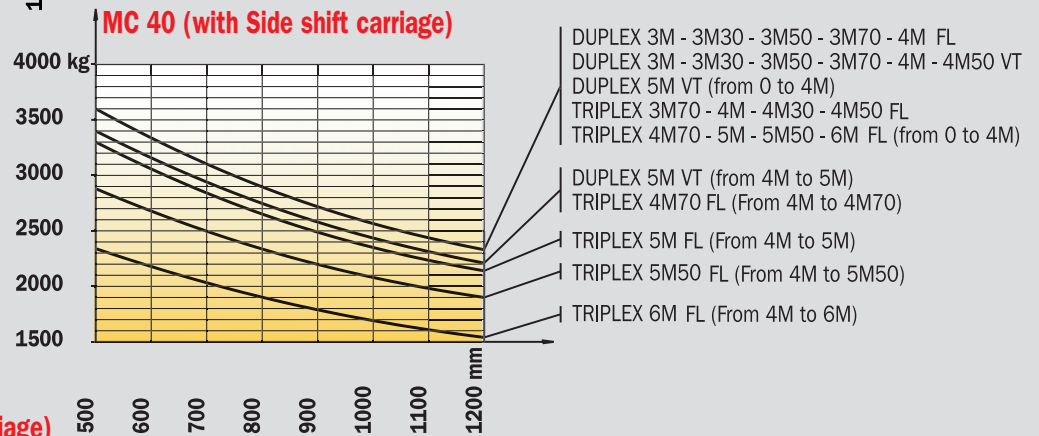
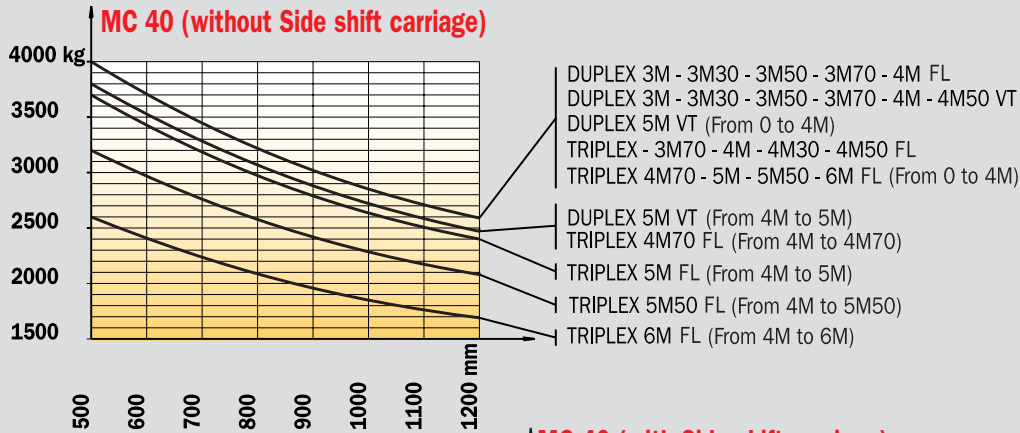
MASTS		TYPE	LIFTING HEIGHT ON FORKS (mm)	OVERALL HEIGHT MAST LOWERED (mm)	FREE LIFT ON FORKS (mm)	OVERALL HEIGHT MAST EXTENDED (mm)	HEIGHT AT MAX. CAPACITY (mm)		CAPACITY AT MAX. HEIGHT (kg)		MAST TILTING ANGLE Front/Rear
							With side shift carriage	Without side shift carriage	With side shift carriage	Without side shift carriage	
DUPLEX TOTAL VISIBILITY	3.00 m	MC 40 Powershift	3050	2505	-	4050	3000	3600	4000	15°/15°	
		MC 50 Powershift	3060				3000	4700	5000		
	3.30 m	MC 40 Powershift	3350	2655	-	4350	3300	3600	4000	15°/15°	
		MC 50 Powershift	3360				3300	4700	5000		
	3.50 m	MC 40 Powershift	3550	2755	-	4550	3500	3600	4000	15°/15°	
		MC 50 Powershift	3560				3500	4700	5000		
	3.70 m	MC 40 Powershift	3750	2855	-	4750	3700	3600	4000	15°/15°	
MC 50 Powershift		3760				3700	4700	5000			
4.00 m	MC 40 Powershift	4050	3005	-	5050	4000	3600	4000	15°/15°		
	MC 50 Powershift	4060				4000	4700	5000			
4.50 m	MC 40 Powershift	4550	3250	-	5550	4500	3600	4000	15°/15°		
	MC 50 Powershift	4560				4000	4050	4500			
5.00 m	MC 40 Powershift	5050	3505	-	6050	4000	3400	3800	15°/15°		
	MC 50 Powershift	5060				4000	3600	4000			
DUPLEX FREE LIFT	3.00 m	MC 40 Powershift	3050	2530	1518	4062	3000	3600	4000	15°/15°	
		MC 50 Powershift	3060		1528		3000	4700	5000		
	3.30 m	MC 40 Powershift	3350	2680	1668	4362	3300	3600	4000	15°/15°	
		MC 50 Powershift	3360		1678		3300	4700	5000		
	3.50 m	MC 40 Powershift	3550	2780	1768	4562	3500	3600	4000	15°/15°	
MC 50 Powershift		3560		1778		3500	4700	5000			
3.70 m	MC 40 Powershift	3750	2880	1868	4762	3700	3600	4000	15°/15°		
	MC 50 Powershift	3760		1878		3700	4700	5000			
4.00 m	MC 40 Powershift	4050	3030	2018	5062	4000	3600	4000	15°/15°		
	MC 50 Powershift	4060		2028		4000	4700	5000			
TRIPLEX FREE LIFT	3.70 m	MC 40 Powershift	3750	2255	1255	4750	3700	4000	4000	15°/15°	
		MC 50 Powershift	3760		1265		3700	4500	5000		
	4.00 m	MC 40 Powershift	4050	2355	1355	5050	4000	4000	4000	15°/15°	
		MC 50 Powershift	4060		1365		4000	4500	5000		
	4.50 m	MC 40 Powershift	4550	2530	1530	5550	4500	4000	4000	15°/15°	
		MC 50 Powershift	4560		1540		4000	3600	4000		
	4.70 m	MC 40 Powershift	4750	2590	1590	5750	4000	3400	3800	15°/15°	
MC 50 Powershift		4760		1600		4000	3350	3700			
5.00 m	MC 40 Powershift	5050	2705	1705	6050	4000	3300	3700	10°/15°		
	MC 50 Powershift	5060		1715		4000	2950	3300			
5.50 m	MC 40 Powershift	5550	2855	1855	6550	4000	2880	3200	10°/15°		
	MC 50 Powershift	5560		1865		4000	2150	2400			
6.00 m	MC 40 Powershift	6050	3030	2030	7050	4000	2350	2600	10°/15°		
	MC 50 Powershift	6060		2040		4000	1800	2000			

Tyres MC 40/MC 50 Powershift

Standard		Options				
Front	Rear	Front	Front	Rear	Rear	Rear
Industrial tyres	Industrial tyres	Mixed tyres	Mixed tyres	Mixed tyres	Industrial tyres	Industrial tyres
445/65 R 19.5 XZY Tubeless 165 K	10 R 17.5 134/132 M G291	18 R 19.5 XF Tubeless (445/65R 19.5)	18-19.5 ML 224 18 PR Tubeless	285/70R 19,5 XZY Tubeless 140/137 L	10 R 17.5 LSR Tubeless 134/132 L	10 R 17.5 LDR Tubeless 134/132 L
Tyre width (mm)						
450	250	450	460	290	262	262
Overall width (mm)						
2050	1890	2050	2060	1880	1902	1902
						

Load charts MC 40/MC 50 Powershift

(In accordance with standard EN 1726 - 1 Appendix H)





- **Comfortable and ergonomically designed driver's compartment**

These yard forklifts are designed to be spacious and comfortable. The driver has an enclosed cab (volume 2m³) with tinted windows as standard.

Masts in the MANITOU range have widely spaced profiles to maintain good forward vision.

The cab is fitted out to ensure a comfortable driving position, with a fabric-covered seat, a steering column that can be adjusted to suit the driver, a practical dashboard, and control levers near the seat.

A version with an open cab is also available as an option.



- **Working environment**

The driver's compartment is accessible from either side of the truck using a wide non-slip step.

The doors open and lock from the outside of the truck so that work can be carried out with the doors open with no risk.



The cab is suspended to insulate the operator from vibrations and noise.

The sound level to the environment complies with the latest standards in force.

The range MC includes models from 3 to 7 tonnes.

MC 40/50 Powershift



Load capacity

MC 40 Powershift.....4000 kg
At 500 mm load center
MC 50 Powershift.....5000 kg
At 600 mm load center



Standard lifting height.....3.70 m

Speed unladen/laden (m/s)
Lifting MC 40 Powershift.....0.53/0.49
MC 50 Powershift.....0.46/0.40
Lowering MC 40 Powershift.....0.41/0.50
MC 50 Powershift.....0.41/0.50



Tyres

Front445/65 R 19.5 Tubeless XZY 165 K
Rear10 R 17.5 G 291



Forks (mm)

Length1200
Width x thickness MC 40 Powershift.....150x50
MC 50 Powershift.....150x60



Brakes hydraulically operated oil-immersed multidiscs



PERKINS engine

TypeAtmo 1004.42
Capacity4 cyl. - 4233 cm³
Rated speed2200 r.p.m.
Power (ISO/TR 14396)60 Kw (80 HP)
Maximum torque300 Nm at 1400 r.p.m.
Direct injection
Water cooling



Transmission.....Powershift

Electro hydraulic reversing shift
4 speeds forward and 3 speeds reverse
Maximum travel speed25 km/h
Hydraulic differential lock



Hydraulics

Main pump
Gear type MC 40/50 Powershift.....210 bar/87 l./mn
Flow divider with priority to steering
gear type145 bar/87 l./mn

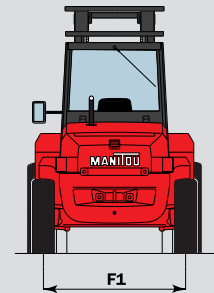
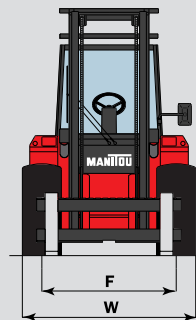
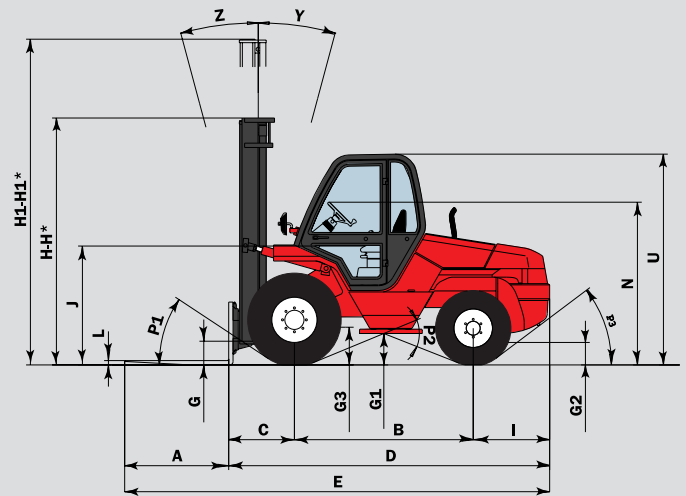


Capacités

Cooling system19 l
Engine oil10.5 l
Hydraulic oil80 l
Transmission oil.....12.5 l
Fuel tank85 l

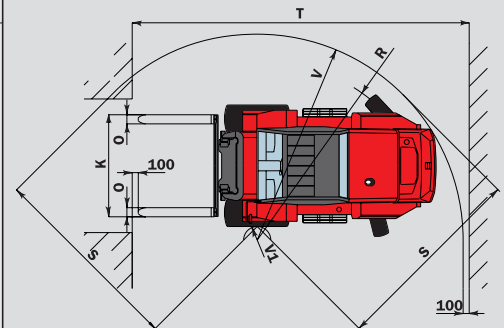


Weight (with forks) MC 40 Powershift6660 kg
MC 50 Powershift7620 kg



	MC 40 Powershift	MC 50 Powershift
A	1200	1200
B	2063	2063
C	762	772
D	3745	3755
E	4945	4955
F	1590	1590
F1	1640	1640
G	265	265
G1	365	365
G2	290	290
G3	360	360
H	2855	2855
H1	4750	4750
H*	2455	2455
H1*	5350	5350
I	920	920
J	1380	1380
K	1670	1670
L	50	60
N	1840 à 1900	
O	150	150
P1	33.5°	33.5°
P2	44°	44°
P3	37°	37°
R	2970	2970
S	3255	3255
T	5560	5570
U	2420	2420
V	3395	3395
V1	200	200
W	2050	2050
Y	15°	15°
Z	15°	15°

mm



Standard :

- Closed cab with tinted windows
- Fabric-covered seat
- Adjustable steering wheel
- Heating
- Front and rear windscreen wipers and washers
- Exterior left-hand rear-view mirror
- Front and rear driving lights
- Hydraulic differential lock
- ...

Options

- Cab
- Rotating beacon
- Reverse Alarm
- Working light
- Wide carriages
- Various attachments such as buckets, sideshift carriage, grabs, etc...

This publication in no way constitutes an offer and the company reserve the right to alter specification without prior notice. The MANITOU models presented in this brochure can be supplied complete with optional equipment attachments.



MANITOU B.F. S.A.

B.P.249 - 44158 ANCENIS CEDEX - FRANCE

TEL : 33 2 40 09 10 11

EXPORT DEPARTMENT FAX : 33 2 40 09 10 97

www.manitou.com