


# MANISCOPIC


# MT 523


- Maximum lifting height : 4.92 m
- Capacity : 2300 kg
- Maximum forward reach : 2.83 m
- Hydrostatic transmission



## MT 523


 **Lifting capacity** .....2300 kg  
at 500 mm from forks heels.  
Tipping load  
at maximum reach : .....1420 kg  
Tear out force with bucket  
to ISO 8313 .....4320 daN


 **Lifting height** : .....4.92 m  
**Times** : unladen/loaded (in s)  
Lifting.....6.3/7.1  
Lowering.....4.2/4.2  
Boom extension.....4.7/4.8  
Boom retraction .....3/2.5  
Time unladen (in s)  
Crowd .....2.8  
Dump.....2.4


 **Tyres**  
12.0 - 18 T86 12 PR  
Option : 10.5 - 18 TG 42 10 PR

 **Forks** (mm)  
Length .....1200  
Width x thickness.....125 x 40


 **Oil bath multidisc brakes on front axle**

 **Perkins engine**  
Type .....903.27 3/2700 cm<sup>3</sup>  
Power (ISO/TR 14396).....52 HP/38.5 kw  
Maximum torque .....192 Nm at 1200 tr/mn  
Direct injection  
Water cooling

 **Transmission** .....hydrostatic  
Electro - hydraulic reversing shift  
One speed forward and reverse

 **Hydraulics**  
Lifting/tilting pump :  
gear type .....85 l./mn - 230 bars  
Flow divider with priority to steering

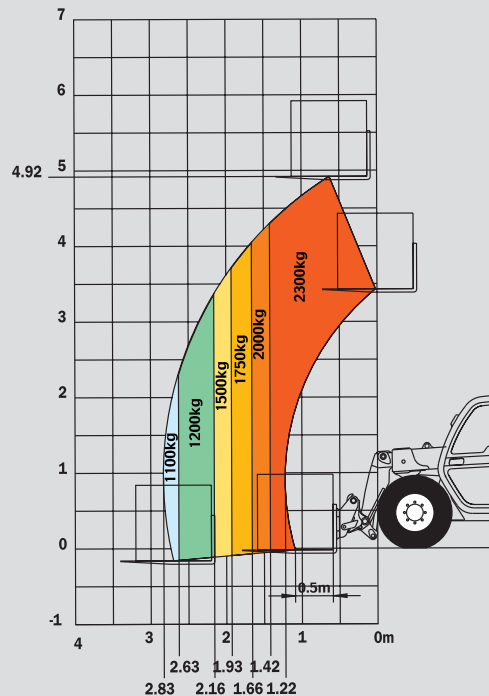
 **Capacities**  
Cooling system .....14.5 l.  
Transmission oil.....102.5 l.  
Engine oil .....6.1 l.  
Fuel tank.....104 l.

 **Weight unladen** (with forks) .....5010 kg  
**Overall width** .....1.80 m  
**Overall height** .....1.98\* or 2.01 m  
**Turning radius** (outside wheels) .....3.10 m  
**Length up to carriage** .....4.20 m  
**Ground clearance** .....0.30 m  
**Drawbar pull** .....3000 daN

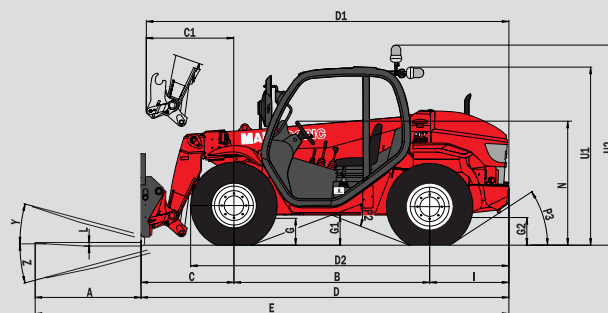
\* Tyres : 10.5 - 18

This publication in no way constitutes an offer and the company reserves the right to alter specification without prior notice. Model illustrated may have optional equipment which is available at additional cost.

## Reach at maximum height : 0,64 m



Under EN 1459 annexe B



MT 523	
Atmo	
A	1200
B	2220
C	1076
C1	1071
D	4201
D1	4202
D2	3565
E	5401
F	1500
F1	1500
G	290
G1	335
G2	305
I	905
J	865
K	1040
L	40
N	1390
O	125
P2	39°
P3	31°
R	2950
S	6490
T	3015
U1	1990
U2	2280
V	4120
V1	1105
V2	3105
W	1815
Y	12°
Z	120.2°

(mm)

