

WX

SERIES

WHEELED EXCAVATORS

WX210

CASE



P R O F E S S I O N A L P A R T N E R

NEW GENERATION... NEW

MAINTENANCE

- Latest generation CASE Family III engine
- Compact upperstructure with catwalk for better service access
- Self diagnosis integrated in the electronic management system
- Longer service intervals (500 hrs oil change interval)
- Easy and simple service point access
- Ecological engine oil draining cap

SAFETY

- Unique CASE Inching and extra slow speed
- Integrated anti theft device
- Engine safe warm up control
- Road travel mode with swing and attachment circuit cut out
- Automatic battery cut off
- Stabiliser cylinder protection



DESIGN... CASE CONTINUITY

PERFORMANCE

- Lifting capacity equivalent to conventional design models
- 30 km/h top speed
- PowerShift gear box, on the move gear shifting
- Superior engine power
- High swing torque
- Best in class tractive effort
- Powerboost
- Hydraulic tool pressure and flow pre-setting
- Hydraulically driven fan with thermostatic regulation
- Full stabilisers and blade independence
- Total chassis versatility
- Independent swing hydraulic circuit
- Mechanically lockable large section stabilisers pads
- Common fitting buckets with CASE CX range
- Quick couplers for previous WX range buckets
- Quick connectors on hydraulic option circuits

COMFORT

- Air suspension seat
- Fully glazed cab for outstanding all round visibility
- Full up and over front windscreen
- Automatically operating brake system
- Automatic front axle lock
- Forward/reverse control on joystick
- Dozer blade and stabilisers fine control on joystick
- Simple to select operating modes
- "DIGIPOWER" management control of all hydraulic functions
- Transparent roof
- Tilttable steering column
- Fine grading control mode
- Swing brake modes
- Electric refuel pump
- One key for all locking functions



ENGINE

Make	CASE - Family III
Model	659TA-M2
Type	6 cyl. turbo charged, direct injection, intercooler
Displacement	5.9 l
Bore x stroke	102 x 120 mm
Output power (ISO 14396)	129 kW/173 hp
Rated speed	2000 rpm

The latest generation of CASE Family III engines are in accordance with the EU Tier 2 directive. Modern, quiet with low fuel consumption and designed for reliability the CASE engine reduces owning and operating costs. Engine auto idle can be de-activated manually.



HYDRAULIC CIRCUIT

Main pumps	3 variable displacement, axial piston
Total maximum flow	2 x 200 + 112 l/min
Attachment maximum pressure/Powerboost	350/370 bar
Travel maximum pressure	350 bar
Swing maximum pressure	390 bar

The "DIGIPOWER" hydraulic system monitors the two main pumps, the separated "closed circuit swing pump", and regulates engine power according to demand. It offers 7 selectable power levels (4 digging and 3 lifting), including levelling mode for fine grading operations. Powerboost is automatic in lifting mode and can be activated for 8 seconds in the other modes).

UNDERCARRIAGE

The CASE WX range features a new PowerShift transmission with a two gear range, and with "on the move" shifting. The maximum travel speed is increased up to 30 km/h, to reduce on road down times.

The typical CASE "Inching" associated with the "creeper" position allows safe and accurate movements, for loading on to a trailer.

Modular frame allows the assembly of all possible chassis configuration, according to customer requests. Either pin-on fitted or welded on the main structure, the stabilisers beam design is outstandingly rigid.

The stabilisers and blade are fully independent, (front/rear and left/right), controlled by the dipper joystick and easily selectable by switches.

The large section stab pads are lockable to ensure the best dynamic stability to the machine, in soft ground condition, keeping the articulation for hard surface applications.

Right hand side spacious tool box under the steps is standard.

Maximum travel speed (field range)	8 km/h
Maximum travel speed (road range)	20 or 30 km/h
Maximum drawbar pull (field range)	87 kN

As on previous range the front axle lock is automatic.



CAB

The cab has been designed with the operator in mind:

- Spacious and ergonomic environment with tinted safety glass offering outstanding all round visibility
- Modular total or partial opening windscreen with transparent rain shield
- Large roof window with sunshade
- Fully adjustable air suspension seat
- Steering column with continuously adjustable inclination
- Exceptionally quiet cab
- Easy to operate joystick controls and pedals

Large LCD display integrating the working mode information, auto diagnostic function and working status.

For operator convenience, all the major operating controls are located on the joysticks:

- Forward/reverse/neutral travel
- Attachment/Blade-Stabilisers selection
- Levelling mode
- Power boost
- Hydraulic options

NOISE LEVELS

LwA	106 dBA
LpA	77 dBA



ELECTRICAL CIRCUIT

Voltage output	24 V
Batteries	2 x 12 V - 100 Ah
Alternator	70 A

Automatic isolator switch and 12 V power supply in cab as standard.



BRAKE SYSTEM

In order to keep the operator focussed on his own work, the travel brake is automatically activated when the pedal is released. The brakes are a multi-disc design for smooth operation.

TYRES

4 Wheels	18 - 22.5XF
8 Wheels with twinning rings	10.00 - 20

SWING

The swing function is operated by a hydraulic closed circuit coupled with a mechanical reducer integrating an automatic static brake. The hydro-static swing brake is adjustable with 3 settings.

Swing speed	9 rpm
Swing torque	55 kNm

CAPACITIES

Engine oil	16 l
Cooling circuit	29 l
Fuel tank	325 l
Hydraulic tank	160 l
Swing gear	4 l

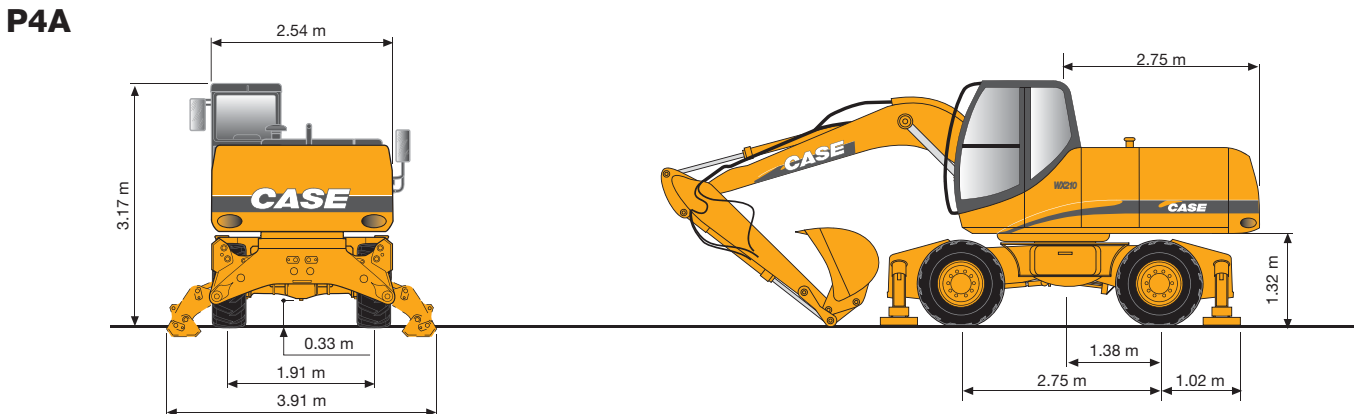
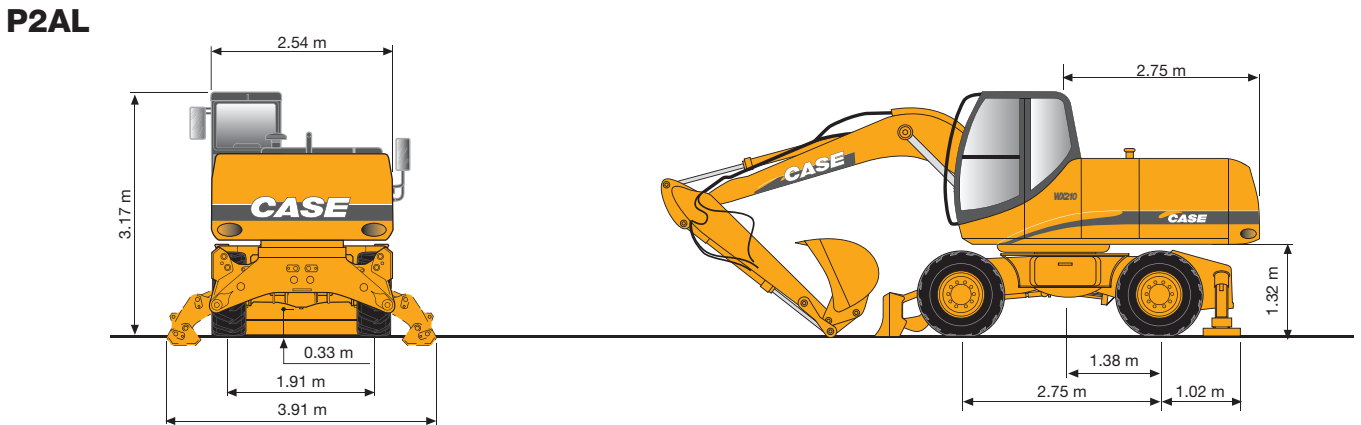
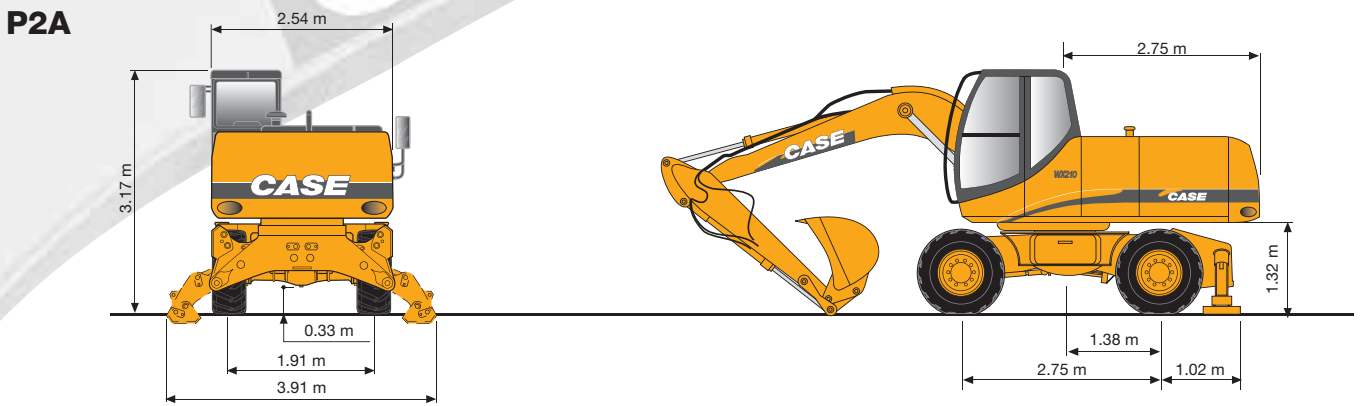
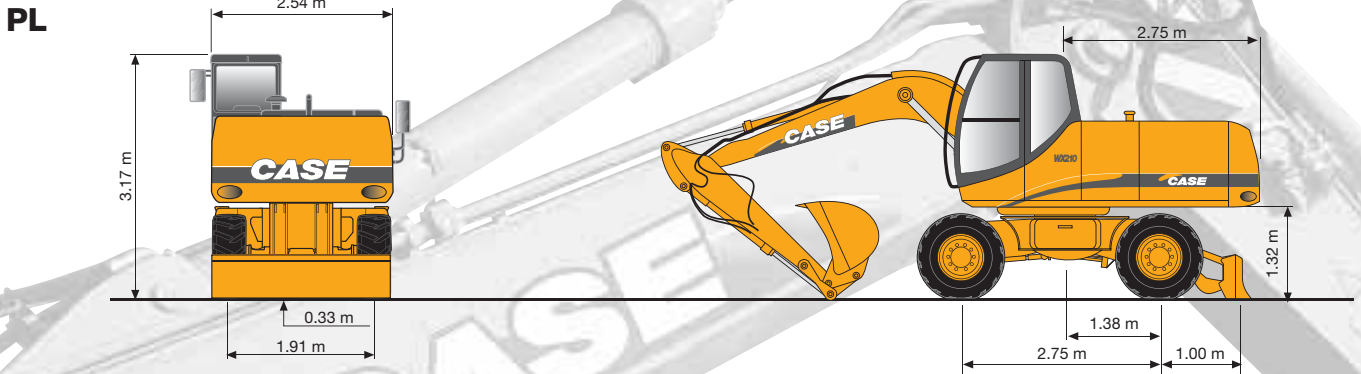
UPPERSTRUCTURE

The new CASE WX offers as standard a compact upperstructure, integrating a transversal engine position. Even with a reduced tail radius, the service point accessibility maintained and the catwalk remains the best access location for servicing.

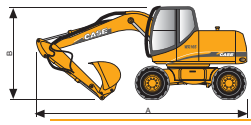
Tail swing radius	2.75 m
--------------------------	--------



OVERALL DIMENSIONS



SHIPPING DIMENSIONS AND WEIGHT



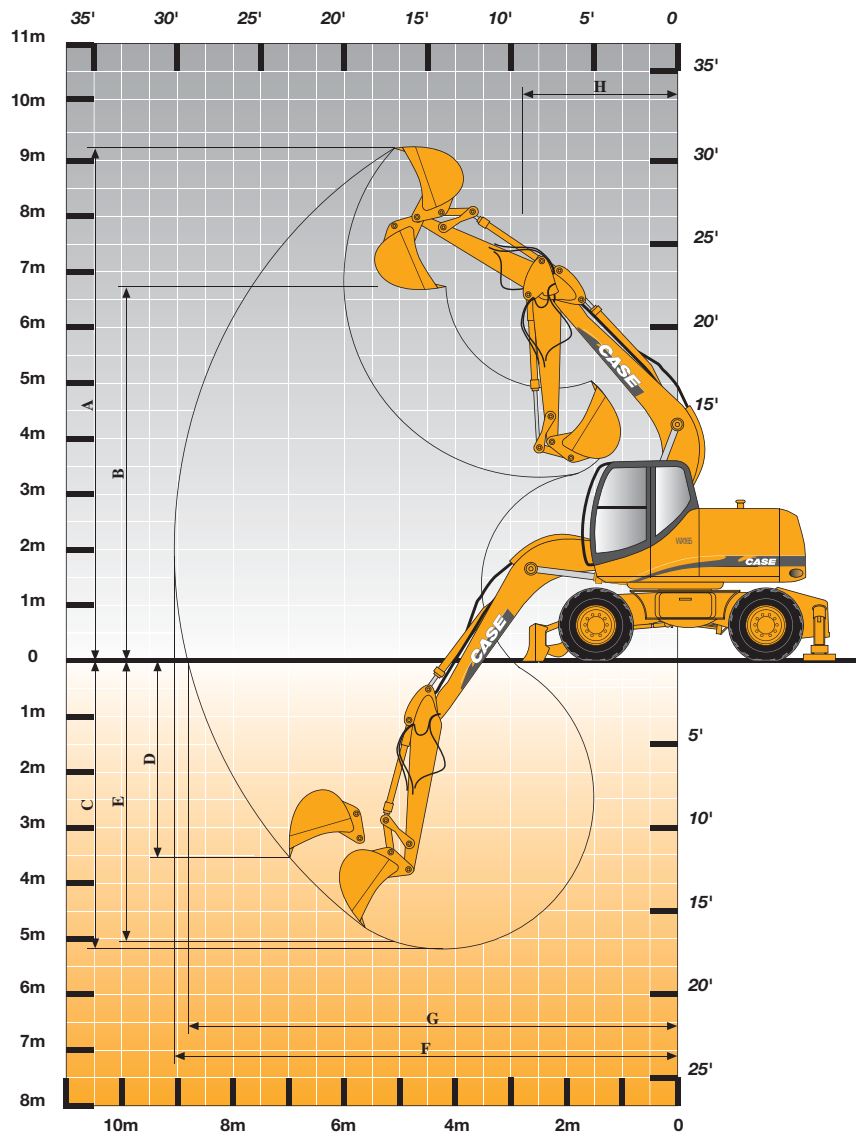
MONO BOOM

ARTICULATED BOOM

	PL Rear blade			P2A Rear stabilisers			P2AL Front blade + rear stab.			P4A 4 Stabilisers		
	A m	B m	kg	A m	B m	kg	A m	B m	kg	A m	B m	kg
Dipper 2.30 m	9685	3219	18 918	9685	3219	19 479	9685	3219	20 081	9685	3219	20 544
Dipper 2.60 m	9675	3197	18 988	9675	3197	19 549	9675	3197	20 151	9675	3197	20 614
Dipper 2.90 m	9675	3279	19 052	9675	3279	19 613	9675	3279	20 215	9675	3279	20 678
Dipper 2.30 m	9434	3151	19 719	9434	3151	20 280	9434	3151	20 882	9434	3151	21 345
Dipper 2.60 m	9434	3155	19 789	9434	3155	20 350	9434	3155	20 952	9434	3155	21 415
Dipper 2.90 m	9415	3221	19 853	9415	3221	20 414	9415	3221	21 016	9415	3221	21 479

Weights are indicated fitted with a 670 Kg bucket





WORKING RANGE

		MONO BOOM 5.60 m			ARTICULATED BOOM 5.40 m		
		DIPPER			DIPPER		
		2.3 m	2.6 m	2.9 m	2.3 m	2.6 m	2.9 m
A Max. digging height	m	10.0	10.0	10.1	10.1	10.2	10.4
B Max. loading height	m	7.2	7.3	7.4	7.3	7.4	7.6
C Max. digging depth	m	5.6	5.9	6.2	5.7	6.0	6.3
D Max. vert. wall digging depth	m	4.3	4.2	4.5	4.2	4.6	4.9
E Max. depth of cut for 8° level bottom	m	5.4	5.7	6.0	5.6	5.9	6.2
F Max. digging reach	m	9.5	9.8	10.0	9.4	9.6	9.9
G Max. digging reach at ground level	m	9.4	9.6	9.9	9.2	9.4	9.7
H Min. front swing radius	m	3.3	3.2	3.2	3.2	3.1	3.2
Bucket breakout force (370 bar)	kN	150	150	150	150	150	150
Stick crowd force (370 bar)	kN	122	113	105	122	113	105

BUCKETS

General purpose

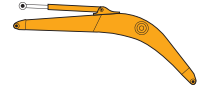
Capacity SAE	l	410	560	700	800	900	1050	1150	1250
Width	mm	600	750	900	1000	1100	1250	1350	1450
Weight	kg	554	600	640	670	700	760	790	820

Heavy duty

Capacity SAE	l					900	1050	1150	
Width	mm					1100	1250	1350	
Weight	kg					740	810	840	

LIFTING CAPACITY

MONO BOOM



MONO BOOM: 5.60 m
BUCKET (CECE): 0.70 m³

PL DIPPERSTICK 2.3 m							
Height	Reach						At max reach
	3.0 m Front 360°	4.5 m Front 360°	6.0 m Front 360°	7.5 m Front 360°	Front 360°	Max reach	
9.0 m							
7.5 m			3.9*	3.2		3.6*	3.2 6.1
6.0 m			5.3*	3.2		3.4*	2.2 7.3
4.5 m		7.0*	5.0	5.8*	3.1 5.2*	2.0 3.4*	1.7 8.0
3.0 m		9.1*	4.4	6.7*	2.8 5.6	1.9 3.6*	1.5 8.4
1.5 m		10.8*	3.8	7.6*	2.5 5.4	1.7 3.9*	1.4 8.4
0.0 m		11.3*	3.6	7.7	2.3 5.3	1.6 4.5	1.4 8.2
-1.5 m	9.8*	6.8	10.9*	3.5	7.6	2.2 5.2	1.6 7.7
-3.0 m	13.5*	7.0	9.6*	3.6	7.0*	2.3	5.7* 1.9 6.8
-4.5 m			6.9*	3.8			5.5* 2.9 5.3

P2A DIPPERSTICK 2.3 m							
Height	Reach						At max reach
	3.0 m Front 360°	4.5 m Front 360°	6.0 m Front 360°	7.5 m Front 360°	Front 360°	Max reach	
9.0 m							
7.5 m				3.9*	3.9*		3.6* 3.6* 6.1
6.0 m				5.3*	4.2		3.4* 2.9 7.3
4.5 m		7.0*	6.6	5.8*	4.0 5.2	2.7	3.4* 2.3 8.0
3.0 m		9.1*	5.9	6.7*	3.7 5.1	2.5	3.6* 2.1 8.4
1.5 m		10.8*	5.3	7.2	3.4 4.9	2.4	3.9* 1.9 8.4
0.0 m		11.3*	5.0	7.0	3.2 4.8	2.3	4.1* 2.0 8.2
-1.5 m	9.8*	9.8*	10.9*	4.9	6.9	3.2	4.8 2.3 7.7
-3.0 m	13.5*	10.2	9.6*	5.0	6.9	3.2	5.6 2.7 6.8
-4.5 m			6.9*	5.3			5.5* 4.1 5.3

PL DIPPERSTICK 2.6 m							
Height	Reach						At max reach
	3.0 m Front 360°	4.5 m Front 360°	6.0 m Front 360°	7.5 m Front 360°	Front 360°	Max reach	
9.0 m							
7.5 m				3.9*	3.3		3.1* 3.0 6.3
6.0 m				4.9*	3.3		2.9* 2.1 7.5
4.5 m		6.5*	5.1	5.5*	3.1 5.0*	2.0 2.9*	1.6 8.2
3.0 m		8.6*	4.5	6.4*	2.8 5.4*	1.8 3.1*	1.4 8.5
1.5 m		10.4*	3.9	7.3*	2.5 5.4	1.7 3.4*	1.3 8.6
0.0 m	6.1*	6.1*	11.2*	3.5	7.7	2.3 5.2	1.6 4.0*
-1.5 m	9.9*	6.7	11.0*	3.4	7.6	2.2 5.2	1.5 4.7
-3.0 m	14.3*	6.9	9.9*	3.5	7.2*	2.2	5.7* 1.7 7.0
-4.5 m	10.6*	7.2	7.5*	3.7			5.7* 2.6 5.6

P2A DIPPERSTICK 2.6 m							
Height	Reach						At max reach
	3.0 m Front 360°	4.5 m Front 360°	6.0 m Front 360°	7.5 m Front 360°	Front 360°	Max reach	
9.0 m							
7.5 m				3.9*	3.9*		3.1* 3.1* 6.3
6.0 m				4.9*	4.3		2.9* 2.8 7.5
4.5 m		6.5*	6.5*	5.5*	4.0 5.0*	2.7	2.9* 2.2 8.2
3.0 m		8.6*	6.0	6.4*	3.7 5.1	2.5	3.1* 2.0 8.5
1.5 m		10.4*	5.3	7.2	3.4 4.9	2.4	3.4* 1.8 8.6
0.0 m	6.1*	6.1*	11.2*	5.0	6.9	3.2	4.8 2.3 8.4
-1.5 m	9.9*	9.9	11.0*	4.9	6.8	3.1	4.7 2.2 7.9
-3.0 m	14.3*	10.1	9.9*	4.9	6.8	3.1	5.3 2.5 7.0
-4.5 m	10.6*	10.5	7.5*	5.1			5.7* 3.6 5.6

PL DIPPERSTICK 2.9 m							
Height	Reach						At max reach
	3.0 m Front 360°	4.5 m Front 360°	6.0 m Front 360°	7.5 m Front 360°	Front 360°	Max reach	
9.0 m							
7.5 m				4.0*	3.4		2.7* 2.6 6.7
6.0 m				4.6*	3.3	3.4*	2.1 2.5*
4.5 m				5.2*	3.1 4.7*	2.0 2.6*	1.5 8.5
3.0 m	13.3*	8.6	8.0*	4.6	6.1*	2.8 5.2*	1.8 2.7*
1.5 m			10.0*	3.9	7.1*	2.5 5.4	1.7 3.0*
0.0 m	6.3*	6.3*	11.1*	3.5	7.7	2.3 5.2	1.5 3.4*
-1.5 m	9.4*	6.6	11.1*	3.4	7.5	2.1 5.1	1.5 4.3*
-3.0 m	13.6*	6.7	10.1*	3.4	7.3*	2.1	5.3 1.5 7.4
-4.5 m	11.6*	7.0	8.1*	3.6	5.6*	2.3	5.5* 2.2 6.1

P2A DIPPERSTICK 2.9 m							
Height	Reach						At max reach
	3.0 m Front 360°	4.5 m Front 360°	6.0 m Front 360°	7.5 m Front 360°	Front 360°	Max reach	
9.0 m							
7.5 m				4.0*	4.0*		2.7* 2.7* 6.7
6.0 m				4.6*	4.3	3.4*	2.8 2.5*
4.5 m				5.2*	4.1 4.7*	2.7	2.6* 2.1 8.5
3.0 m	13.3*	12.0	8.0*	6.1	6.1*	3.8 5.1	2.5 2.7*
1.5 m			10.0*	5.4	7.1*	3.4 4.9	2.4 3.0*
0.0 m	6.3*	6.3*	11.1*	5.0	6.9	3.2	4.8 2.2 8.7
-1.5 m	9.4*	9.4*	11.1*	4.8	6.8	3.1	4.7 2.2 8.2
-3.0 m	13.6*	9.9	10.1*	4.8	6.8	3.1	4.8 2.2 7.4
-4.5 m	11.6*	10.3	8.1*	5.0	5.6*	3.2	5.5* 3.1 6.1

P2AL DIPPERSTICK 2.3 m							
Height	Reach						At max reach
	3.0 m Front 360°	4.5 m Front 360°	6.0 m Front 360°	7.5 m Front 360°	Front 360°	Max reach	
9.0 m							
7.5 m				3.9*	3.9*		3.6* 3.6* 6.1
6.0 m				5.3*	5.3*		3.4* 3.4* 7.3
4.5 m		7.0*	7.0*	5.8*	5.2 5.2*	3.5 3.4*	3.1 8.0
3.0 m		9.1*	7.9	6.7*	4.9 5.6*	3.4 3.6*	2.8 8.4
1.5 m		10.8*	7.2	7.6*	4.6 6.0*	3.2 3.9*	2.6 8.4
0.0 m		11.3*	6.9	8.0*	4.4 6.2	3.1 4.5*	2.7 8.2
-1.5 m	9.8*	9.8*	10.9*	6.8	7.9*	4.3 5.9*	3.1 3.0 7.7
-3.0 m	13.5*	13.5*	9.6*	6.9	7.0*	4.4	5.7* 3.6 6.8
-4.5 m			6.9*	6.9*			5.5* 5.5 5.3

P4A DIPPERSTICK 2.3 m							
Height	Reach						At max reach
	3.0 m Front 360°	4.5 m Front 360°	6.0 m Front 360°	7.5 m Front 360°	Front 360°	Max reach	
9.0 m							
7.5 m				3.9*	3.9*		3.6* 3.6* 6.1
6.0 m				5.3*	5.3*		3.4* 3.4* 7.3
4.5 m		7.0*	7.0*	5.8*	5.8*	5.2*	4.5 3.4* 8.0
3.0 m		9.1*	9.1*	6.7*	6.4 5.6*	4.4	3.6* 3.6* 8.4
1.5 m		10.8*	9.7	7.6*	6.1 6.0	4.2	3.9* 3.5 8.4
0.0 m		11.3*	9.4	8.0*	5.8 5.9	4.1	4.5* 3.6 8.2
-1.5 m	9.8*	9.8*	10.9*	9.3	7.9*	5.7	5.8 4.1 7.7
-3.0 m	13.5*	13.5*	9.6*	9.4	7.0*	5.8	5.7* 4.8 6.8
-4.5 m			6.9	6.9*			5.5* 5.5* 5.3

P2AL DIPPERSTICK 2.6 m							
Height	Reach						At max reach
	3.0 m Front 360°	4.5 m Front 360°	6.0 m Front 360°	7.5 m Front 360°	Front 360°	Max reach	
9.0 m							
7.5 m				3.9*	3.9*		3.1* 3.1* 6.3
6.0 m				4.9*	4.9*		2.9* 2.9* 7.5
4.5 m		6.5*	6.5*	5.5*	5.3 5.0*	3.5 2.9*	2.9* 8.2
3.0 m		8.6*	8.0	6.4*	4.9 5.4*	3.4 3.1*	2.7 8.5
1.5 m		10.4*	7.3	7.3*	4.6 5.8*	3.2 3.4*	2.5 8.6
0.0 m	6.1*	6.1*	11.2*	6.9	7.9*	4.4 6.1*	3.1 4.0*
-1.5 m	9.9*	9.9*	11.0*	6.8	7.9*	4.3 6.0*	3.0 5.1*
-3.0 m	14.3*	14.3*	9.9*	6.8	7.2*	4.3	5.7* 3.4 7.0
-4.5 m	10.6*	10.6*	7.5*	7.0			5.7* 4.9 5.6

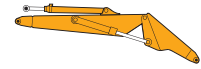
P4A DIPPERSTICK 2.6 m							
Height	Reach						At max reach
	3.0 m Front 360°	4.5 m Front 360°	6.0 m Front 360°	7.5 m Front 360°	Front 360°	Max reach	
9.0 m							
7.5 m				3.9*	3.9*		3.1* 3.1* 6.3
6.0 m				4.9*	4.9*		2.9* 2.9* 7.5
4.5 m		6.5*	6.5*	5.5*	5.5*	5.0*	4.5 2.9* 8.2
3.0 m		8.6*	8.6*	6.4*	6.4 5.4*	4.4	3.1* 3.1* 8.5
1.5 m		10.4*	9.8	7.3*	6.1 5.8*	4.2	3.4* 3.3 8.6
0.0 m	6.1*	6.1*	11.2*	9.4	7.9*	5.8	5.8 4.1 8.4
-1.5 m	9.9*	9.9*	11.0*	9.2	7.9*	5.7	5.8 4.0 8.2
-3.0 m	14.3*	14.3*	9.9*	9.3	7.2*	5.7	5.7* 4.5 7.0
-4.5 m	10.6*	10.6*	7.5*	7.5*			5.7* 5.7* 5.6

P2AL DIPPERSTICK 2.9 m							
Height	Reach						At max reach
	3.0 m Front 360°	4.5 m Front 360°	6.0 m Front 360°	7.5 m Front 360°	Front 360°	Max reach	
9.0 m							
7.5 m				4.0*	4.0*		2.7* 2.7* 6.7
6.0 m				4.6*	4.6*	3.4*	3.4* 2.5*
4.5 m				5.2*	5.2*	4.7*	3.5 2.6*
3.0 m	13.3*	13.3*	8.0*	8.0	6.1*	5.0 5.2*	3.4 2.7*
1.5 m			10.0*	7.3	7.1*	4.6 5.7*	3.2 3.0*
0.0 m	6.3*	6.3*	11.1*	6.9	7.7*	4.4 6.1*	3.1 4.0*
-1.5 m	9.4*	9.4*	11.1*	6.7	7.9*	4.2 6.0*	3.0 4.3*
-3.0 m	13.6*	13.6*	10.1*	6.7	7.3*	4.2	5.4* 3.1 7.4
-4.5 m	11.6*	11.6*	8.1*	6.9	5.6*	4.4	5.5* 4.3 6.1

P4A DIPPERSTICK 2.9 m							
Height	Reach						At max reach
	3.0 m Front 360°	4.5 m Front 360°	6.0 m Front 360°	7.5 m Front 360°	Front 360°	Max reach	
9.0 m							
7.5 m				4.0*	4.0*		2.7* 2.7* 6.7
6.0 m				4.6*	4.6*	3.4*	3.4* 2.5*
4.5 m				5.2*	5.2*	4.7*	4.5 2.6*
3.0 m	13.3*	13.3*	8.0*	8.0*	6.1*	6.1*	5.2* 4.4 2.7*
1.5 m			10.0*	9.9	7.1*	6.1	5.7* 4.2 3.0*
0.0 m	6.3*	6.3*	11.1*	9.4	7.7*	5.8	5.8 4.0 3.4*
-1.5 m	9.4*	9.4*	11.1*	9.2	7.9*		

LIFTING CAPACITY

ARTICULATED BOOM



BASE BOOM: 2.01 m
TOP BOOM: 3.79 m
BUCKET (CECE): 0.70 m³

PL DIPPERSTICK 2.3 m											
Height	Reach				At max reach						
	3.0 m Front 360°	4.5 m Front 360°	6.0 m Front 360°	7.5 m Front 360°	Front 360°	360°	Max reach				
9.0 m											
7.5 m					3.8*	3.4	5.9				
6.0 m					3.4*	2.3	7.1				
4.5 m		6.6*	5.4	5.4*	3.4	4.4*	7.8				
3.0 m	12.1*	9.4	10.2*	5.0	6.1*	3.4	5.2*	2.0	3.3*	1.6	8.2
1.5 m	13.7*	9.1	10.2*	5.0	7.1*	3.3	5.7	1.9	3.5*	1.5	8.3
0.0 m	16.1*	9.3	11.3*	5.0	7.8*	3.1	5.6	1.8	4.3*	1.5	8.1
-1.5 m	18.8*	8.7	11.5*	4.6	8.1	2.7	5.3*	1.6	5.3*	1.6	7.6
-3.0 m	19.5*	8.5	11.9*	4.2	7.8*	2.4			6.0*	2.0	6.6
-4.5 m	16.4*	7.9							10.0*	4.6	4.2

P2A DIPPERSTICK 2.3 m											
Height	Reach				At max reach						
	3.0 m Front 360°	4.5 m Front 360°	6.0 m Front 360°	7.5 m Front 360°	Front 360°	360°	Max reach				
9.0 m											
7.5 m					3.8*	3.8*	5.9				
6.0 m					3.4*	3.1	7.1				
4.5 m		6.6*	6.6*	5.4*	4.3	4.4*	2.8	3.3*	2.5	7.8	
3.0 m	12.1*	12.1*	8.2*	6.5	6.1*	4.2	5.2*	2.7	3.3*	2.2	8.2
1.5 m	13.7*	12.1*	10.2*	6.4	7.1*	4.2	5.2	2.6	3.5*	2.1	8.3
0.0 m	16.1*	12.3	11.3*	6.4	7.4	4.0	5.1	2.5	4.3*	2.1	8.1
-1.5 m	18.8*	12.1	11.5*	6.2	7.6	3.7	4.9	2.3	4.9	2.3	7.6
-3.0 m	19.5*	11.9	11.9*	5.7	7.3	3.4			6.0	2.9	6.6
-4.5 m	16.4*	11.3							10.0*	6.3	4.2

PL DIPPERSTICK 2.6 m											
Height	Reach				At max reach						
	3.0 m Front 360°	4.5 m Front 360°	6.0 m Front 360°	7.5 m Front 360°	Front 360°	360°	Max reach				
9.0 m											
7.5 m			3.6*	3.4			3.2*	3.2	6.2		
6.0 m			4.8*	3.5			2.9*	2.2	7.3		
4.5 m		6.1*	5.4	5.0*	3.4	4.4*	2.1	2.9*	1.7	8.0	
3.0 m	13.0*	9.6	7.6*	5.1	5.9*	3.3	5.0*	2.1	3.0*	1.5	8.4
1.5 m	13.8*	9.2	9.7*	5.0	6.8*	3.3	5.5*	2.0	3.3*	1.4	8.5
0.0 m	15.7*	9.2	11.1*	5.0	7.6*	3.1	5.6	1.8	3.8*	1.4	8.3
-1.5 m	18.2*	8.7	11.3*	4.6	8.0	2.7	5.4	1.6	4.7*	1.5	7.8
-3.0 m	19.2*	8.4	11.7*	4.2	8.0	2.4			5.9*	1.8	6.9
-4.5 m	17.9	7.9	9.7*	3.9					8.1*	3.4	4.9

P2A DIPPERSTICK 2.6 m											
Height	Reach				At max reach						
	3.0 m Front 360°	4.5 m Front 360°	6.0 m Front 360°	7.5 m Front 360°	Front 360°	360°	Max reach				
9.0 m											
7.5 m			3.6*	3.6*			3.2*	3.2*	6.2		
6.0 m			4.8*	4.4			2.9*	2.9	7.3		
4.5 m		6.1*	6.1*	5.0*	4.3	4.4*	2.8	2.9*	2.4	8.0	
3.0 m	13.0*	12.4*	7.6*	6.5	5.9*	4.2	5.0*	2.8	3.0*	2.1	8.4
1.5 m	13.8*	12.1	9.7*	6.3	6.8*	4.1	5.2	2.7	3.3*	2.0	8.5
0.0 m	15.7*	12.2	11.1*	6.3	7.4	4.1	5.1	2.5	3.8*	2.0	8.3
-1.5 m	18.2*	12.2	11.3*	6.2	7.6	3.7	4.9	2.3	4.6	2.1	7.8
-3.0 m	19.2*	11.9	11.7*	5.8	7.2	3.4			5.6	2.6	6.9
-4.5 m	17.9*	11.3	9.7*	5.4					8.1*	4.7	4.9

PL DIPPERSTICK 2.9 m											
Height	Reach				At max reach						
	3.0 m Front 360°	4.5 m Front 360°	6.0 m Front 360°	7.5 m Front 360°	Front 360°	360°	Max reach				
9.0 m											
7.5 m			3.9*	3.4			2.8*	2.8*	6.6		
6.0 m			4.4*	3.5	3.1*	2.1	2.6*	2.0	7.7		
4.5 m		5.6*	5.3	4.9*	3.4	4.4*	2.2	2.5*	1.6	8.3	
3.0 m	11.7*	9.6	7.2*	5.1	5.6*	3.3	4.8*	2.1	2.6*	1.4	8.7
1.5 m	13.2*	9.1	9.3*	4.9	6.5*	3.2	5.2*	2.0	2.8*	1.2	8.8
0.0 m	15.3*	9.0	10.8*	4.9	7.4*	3.2	5.6	1.8	3.2*	1.2	8.6
-1.5 m	17.7*	8.7	11.2*	4.6	7.9	2.8	5.4	1.6	4.0*	1.3	8.1
-3.0 m	19.0*	8.4	11.5*	4.3	8.1	2.5			5.5*	1.6	7.3
-4.5 m	19.1*	7.9	10.6*	3.9					7.0*	2.7	5.5

P2A DIPPERSTICK 2.9 m											
Height	Reach				At max reach						
	3.0 m Front 360°	4.5 m Front 360°	6.0 m Front 360°	7.5 m Front 360°	Front 360°	360°	Max reach				
9.0 m											
7.5 m			3.9*	3.9*			2.8*	2.8*	6.6		
6.0 m			4.4*	4.4	3.1*	2.8	2.6*	2.6*	7.7		
4.5 m		5.6*	5.6*	4.9*	4.3	4.4*	2.9	2.5*	2.2	8.3	
3.0 m	11.7*	11.7*	7.2*	6.5	5.6*	4.2	4.8*	2.8	2.6*	1.9	8.7
1.5 m	13.2*	12.0	9.3*	6.3	6.5*	4.1	5.2	2.7	2.8*	1.8	8.8
0.0 m	15.3*	12.0	10.8*	6.2	7.3	4.1	5.1	2.5	3.2*	1.8	8.6
-1.5 m	17.7*	12.2	11.2*	6.2	7.4	3.8	4.9	2.3	4.0*	2.0	8.1
-3.0 m	19.0*	11.8	11.5*	5.8	7.3	3.4			5.1	2.4	7.3
-4.5 m	19.1*	11.3	10.6*	5.4					7.0*	3.8	5.5

P2AL DIPPERSTICK 2.3 m											
Height	Reach				At max reach						
	3.0 m Front 360°	4.5 m Front 360°	6.0 m Front 360°	7.5 m Front 360°	Front 360°	360°	Max reach				
9.0 m											
7.5 m					3.8*	3.8*	5.9				
6.0 m					3.4*	3.4*	7.1				
4.5 m		6.6*	6.6*	5.4*	5.4	4.4*	3.6	3.3*	3.3*	7.8	
3.0 m	12.1*	12.1*	8.2*	8.2*	6.1*	5.3	5.2*	3.6	3.3*	2.9	8.2
1.5 m	13.7*	13.7*	10.2*	8.1	7.1*	5.2	5.7*	3.5	3.5*	2.8	8.3
0.0 m	16.1*	16.1*	11.3*	8.1	7.8*	5.3	6.1*	3.3	4.3*	2.9	8.1
-1.5 m	18.8*	16.8	11.5*	8.2	8.1*	4.9	5.3*	3.2	5.3*	3.1	7.6
-3.0 m	19.5*	17.0	11.9*	7.7	7.8*	4.6			6.0*	3.9	6.6
-4.5 m	16.4*	16.3							10.0*	8.6	4.2

P4A DIPPERSTICK 2.3 m											
Height	Reach				At max reach						
	3.0 m Front 360°	4.5 m Front 360°	6.0 m Front 360°	7.5 m Front 360°	Front 360°	360°	Max reach				
9.0 m											
7.5 m					3.8*	3.8*	5.9				
6.0 m					3.4*	3.4*	7.1				
4.5 m		6.6*	6.6*	5.4*	5.4*	4.4*	4.4*	3.3*	3.3*	7.8	
3.0 m	12.1*	12.1*	8.2*	8.2*	6.1*	6.1*	5.2*	4.6	3.3*	3.3*	8.2
1.5 m	13.7*	13.7*	10.2*	10.2	7.1*	6.5	5.7*	4.5	3.5*	3.5*	8.3
0.0 m	16.1*	16.1*	11.3*	10.2	7.8*	6.5	6.1	4.4	4.3*	3.8	8.1
-1.5 m	18.8*	18.8*	11.5*	10.4	8.1*	6.4	5.3*	4.2	5.3*	4.1	7.6
-3.0 m	19.5*	19.5*	11.9*	10.3	7.8*	6.1			6.0*	5.1	6.6
-4.5 m	16.4*	16.4*							10.0*	10.0*	4.2

P2AL DIPPERSTICK 2.6 m											
Height	Reach				At max reach						
	3.0 m Front 360°	4.5 m Front 360°	6.0 m Front 360°	7.5 m Front 360°	Front 360°	360°	Max reach				
9.0 m											
7.5 m			3.6*	3.6*			3.2*	3.2*	6.2		
6.0 m			4.8*	4.8*			2.9*	2.9*	7.3		
4.5 m		6.1*	6.1*	5.0*	5.0*	4.4*	3.7	2.9*	2.9*	8.0	
3.0 m	13.0*	13.0*	7.6*	7.6*	5.9*	5.2	5.0*	3.6	3.0*	2.8	8.4
1.5 m	13.8*	13.8*	9.7*	8.0	6.8*	5.2	5.5*	3.5	3.3*	2.7	8.5
0.0 m	15.7*	15.7*	11.1*	8.0	7.6*	5.2	6.0*	3.4	3.8*	2.7	8.3
-1.5 m	18.2*	16.6	11.3*	8.2	8.0*	4.9	5.8*	3.2	4.7*	3.0	7.8
-3.0 m	19.2*	16.9	11.7*	7.7	8.1*	4.6			5.9*	3.6	6.9
-4.5 m	17.9*	16.2	9.7*	7.4					8.1*	6.4	4.9

P4A DIPPERSTICK 2.6 m											
Height	Reach				At max reach						
	3.0 m Front 360°	4.5 m Front 360°	6.0 m Front 360°	7.5 m Front 360°	Front 360°	360°	Max reach				
9.0 m											
7.5 m			3.6*	3.6*			3.2*	3.2*	6.2		
6.0 m			4.8*	4.8*			2.9*	2.9*	7.3		
4.5 m		6.1*	6.1*	5.0*	5.0*	4.4*	4.4*	2.9*	2.9*	8.0	
3.0 m	13.0*	13.0*	7.6*	7.6*	5.9*	5.9*	5.0*	4.6	3.0*	3.0*	8.4
1.5 m	13.8*	13.8*	9.7*	9.7*	6.8*	6.4	5.5*	4.5	3.3*	3.3*	8.5
0.0 m	15.7*	15.7*	11.1*	10.1	7.6*	6.4	6.0*	4.4	3.8*	3.6	8.3
-1.5 m	18.2*	18.2*	11.3*	10.3	8.0*	6.4	5.8*	4.2	4.7*	3.9	7.8
-3.0 m	19.2*	19.2*	11.7*	10.4	8.1*	6.1			5.9*	4.8	6.9
-4.5 m	17.9*	17.9*	9.7*	9.7*					8.1*	8.1*	4.9

P2AL DIPPERSTICK 2.9 m											
Height	Reach				At max reach						
	3.0 m Front 360°	4.5 m Front 360°	6.0 m Front 360°	7.5 m Front 360°	Front 360°	360°	Max reach				
9.0 m											
7.5 m			3.9*	3.9*			2.8*	2.8*	6.6		
6.0 m			4.4*	4.4*	3.1*	3.1*	2.6*	2.6*	7.7		
4.5 m		5.6*	5.6*	4.9*	4.9*	4.4*	3.7	2.5*	2.5*	8.3	
3.0 m	11.7*	11.7*	7.2*	7.2*	5.6*	5.2	4.8*	3.7	2.6*	2.6	8.7
1.5 m	13.2*	13.2*	9.3*	8.0	6.5*	5.1	5.2*	3.6	2.8*	2.5	8.8
0.0 m	15.3*	15.3*	10.8*	7.9	7.4*	5.1	5.8*	3.4	3.2*	2.5	8.6
-1.5 m	17.7*	16.3	11.2*	8.1	7.9*	5.0	6.1*	3.2	4.0*	2.7	8.1
-3.0 m	19.0*	16.9	11.5*	7.8	8.2*	4.6			5.5*	3.3	7.3
-4.5 m	19.1*	16.3	10.6*	7.3					7.0*	5.1	5.5

P4A DIPPERSTICK 2.9 m							
Height	Reach				At max reach		
	3.0 m Front 360°	4.5 m Front 360°	6.0 m Front 360°	7.5 m Front 360°	Front 360		

WX210

BASIC EQUIPMENT

- Robust, shielded arc-welded, modular chassis in box section design
- Patented disc brakes for jolt-free work
- PowerShift gear box
- Large toolbox under the step
- Latest generation CASE Family III Tier 2 diesel engines, European emissions standards
- Direct injection with turbo charger and charge air cooling
- Water-cooled, low-consumption and low-exhaust compliant to EU directive
- Automatic battery main switch (coupled to ignition key)
- Electronic immobiliser
- Pump Management System
- Electrohydraulic servo control
- Triple-pump-hydraulic system with two service pumps and separate swing pump
- Engine and pump monitoring by power limit control
- 8 selectable power stages
- Automatic power increase in DRIVE stage
- Comfortable Inching control
- Encased ball bearing slew ring with long-life lubrication
- Swing drive with low-wearing disc brake
- Noise-insulated and flexibly mounted cabin in soft design
- Tinted safety glazing all around, full up and over windscreen
- Sun blinds, large roof window, transparent rain protection
- LCD with integrated error diagnosis function
- Steering column incline infinitely variable
- Ergonomic design of arm rests and foot pedals
- Driver air suspension seat individually adjustable for height and incline
- Consoles adjustable for height and length
- 12 V electrical auxiliary supply in cab
- Forward / Reverse shifting on joystick
- Independent control of blade and each stabiliser
- Automatic axle locking system
- Automatic working brake
- Travel and swing hydrostatic braking
- Cab headlights
- Electric diesel filling system
- Powerboost system
- Centralised control of blade and stabilisers on left joystick

POSSIBLE ADDITIONAL OPTIONS

- Air conditioning
- 30 km/h forward speed
- Single or twin tyres
- Dozer blade with hydraulic parallel guidance
- Stabilisers with large, lockable pads for secure grip on uneven ground
- Transport holder for clamshell grab
- Intermediate bearing for prop shaft
- Central greasing nipple on boom
- Cooling box
- Radio
- Additional working lights
- Auxiliary heating
- Front and roof guards
- FOPS protection for cab
- Armoured glass for front window
- Safety load hook on coupler
- Safety valves for hoist mode
- Hydraulic system for hammer, grab, shears



SERVICE & SUPPORT THE CASE DEALER YOUR PROFESSIONAL PARTNER

World-class construction equipment is just the start with Case. Your local Case dealer is a total solutions provider. Look to Case dealers to help find the right size machine, attachments and options to meet the demands of your job.

Case dealers help you maximise machine uptime - and profitability. That means you can focus on the job, knowing your Case dealer is never far away.

Case dealers stand behind the equipment they sell, with skilled service technicians fully equipped to resolve your maintenance and repair issues and, the support of a global parts network, recognised as second to none in the industry.

But it doesn't stop there. Through CNH Capital, your local Case dealer offers flexible financing options, leasing packages and insurance services to protect your investment.

When you need more than just equipment, Case dealers deliver. More.



WORLDWIDE CASE CONSTRUCTION EQUIPMENT CONTACT INFORMATION

EUROPE/AFRICA/MIDDLE EAST:
CENTRE D'AFFAIRES EGB
5, AVENUE GEORGES BATAILLE - BP 40401
60671 PLESSIS BELLEVILLE - FRANCE

NORTH AMERICA/MEXICO:
700 STATE STREET
RACINE, WI 53404 U.S.A.

LATIN AMERICA:
AV. GENERAL DAVID SARNOFF 2237
32210 - 900 CONTAGEM - MG
BELO HORIZONTE BRAZIL

ASIA PACIFIC:
UNIT 1 - 1 FOUNDATION PLACE - PROSPECT
NEW SOUTH WALES - 2148 AUSTRALIA

CHINA:
No. 29, INDUSTRIAL PREMISES, No. 376,
DE BAO ROAD, WAIGAOQIAO FTZ, PUDONG,
SHANGHAI, 200131, P.R.C.

NOTE: Standard and optional fittings can vary according to the demands and specific regulations of each country. The illustrations may include optional rather than standard fittings - consult your Case dealer. Furthermore, CNH reserves the right to modify machine specifications without incurring any obligation relating to such changes.

CNH UK Ltd.
Armstrong House
The Finningley Estate
Hayfield Lane
Doncaster
DN9 3XA
Fax +44 (0)1302 802126

Conforms to directive 98/37/CE



www.casece.com

CASE
PROFESSIONAL PARTNER