

# WX

SERIES

WHEELED EXCAVATORS

# WX185

**CASE**



P R O F E S S I O N A L P A R T N E R

# NEW GENERATION... NEW

## MAINTENANCE

- Latest generation CASE Family III engine
- Compact upperstructure with catwalk for better service access
- Self diagnosis integrated in the electronic management system
- Longer service intervals (500 hrs oil change interval)
- Easy and simple service point access
- Ecological engine oil draining cap

## COMFORT

- Air suspension seat
- Fully glazed cab for outstanding all round visibility
- Full up and over front windscreen
- Automatically operating brake system
- Automatic front axle lock
- Forward/reverse control on joystick
- Dozer blade and stabilisers fine control on joystick
- Simple to select operating modes
- "DIGIPOWER" management control of all hydraulic functions
- Transparent roof
- Tilttable steering column
- Fine grading control mode
- Swing brake modes
- Electric refuel pump
- One key for all locking functions

## SAFETY

- Unique CASE Inching and extra slow speed
- Integrated anti theft device
- Engine safe warm up control
- Road travel mode with swing and attachment circuit cut out
- Automatic battery cut off
- Stabiliser cylinder protection



# DESIGN... CASE CONTINUITY

## PERFORMANCE

- Compact upperstructure
- Lifting capacity equivalent to conventional design models
- 30 km/h top speed
- PowerShift gear box, on the move gear shifting
- Superior engine power
- High swing torque
- Best in class tractive effort
- Powerboost
- Hydraulic tool pressure and flow pre-setting
- Hydraulically driven fan with thermostatic regulation
- Full stabilisers and blade independence
- Total chassis versatility
- Independent swing hydraulic circuit
- Mechanically lockable large section stabilisers pads
- Common fitting buckets with CASE CX range
- Quick couplers for previous WX range buckets
- Quick connectors on hydraulic options



## ENGINE

<b>Make</b>	CASE - Family III
<b>Model</b>	659TA-M2
<b>Type</b>	6 cyl. turbo charged, direct injection intercooler
<b>Displacement</b>	5.9 l
<b>Bore x stroke</b>	102 x 120 mm
<b>Output power (ISO 14396)</b>	118 kW/158 hp
<b>Rated speed</b>	2150 rpm

The latest generation of CASE Family III engines are in accordance with the EU Tier 2 directive. Modern, quiet with low fuel consumption and designed for reliability the CASE engine reduces owning and operating costs. Engine auto idle can be deactivated manually.



## HYDRAULIC CIRCUIT

<b>Main pumps</b>	3 variable displacement, axial piston
<b>Total maximum flow</b>	2 x 175 + 100 l/min
<b>Attachment maximum pressure/Powerboost</b>	350/370 bar
<b>Travel maximum pressure</b>	350 bar
<b>Swing maximum pressure</b>	390 bar

The "DIGIPOWER" hydraulic control system monitors the two main pumps, the separated "closed circuit swing pump", and regulates engine power according to demand. It offers 7 selectable power levels (4 digging and 3 lifting), including levelling mode for fine grading operations. Power boost is automatic in lifting mode and can be activated for 8 seconds in the other modes).

## UNDERCARRIAGE

The CASE WX range features a new PowerShift transmission with a two gear range, and with "on the move" shifting. The maximum travel speed is increased up to 30 km/h, to reduce on road down time.

The typical CASE "Inching" associated with the "creeper" position allows safe and accurate movements, for truck trailer loading for instance.

Modular frame allows the assembly of all possible chassis configuration, according to the customer request. Either pin-on fitted or welded on the main structure, the stabilisers beams design is outstandingly rigidity.

The stabilisers and blade are fully independent, (front/rear and left/right), controlled by the dipper joystick and easily selectable by switches.

The large section stab pads are lockable to ensure the best dynamic stability to the machine, in soft ground condition, keeping the articulation for hard surface applications.

Right hand side capacious tool box under the steps is as standard.

<b>Maximum travel speed (field range)</b>	8 km/h
<b>Maximum travel speed (road range)</b>	20 or 30 km/h
<b>Maximum drawbar pull (field range)</b>	115 kN

As on previous range the front axle lock is automatic.



## CAB

The cab has been designed with the operator in mind:

- Spacious and ergonomic environment with tinted safety glass offering an outstanding all round visibility
- Modular total or partial opening windscreen with transparent rain shield
- Large roof window with sunshade
- Fully adjustable air suspension seat
- Steering column with continuously adjustable inclination
- Exceptionally quiet cab
- Easy to operate joystick controls and pedals

Large LCD display integrating working mode information, auto diagnostic function and the working status.

For operator convenience, all the major operating controls are located on the joysticks:

- Forward/reverse/neutral travel
- Attachment/Blade-Stabilisers selection
- Levelling mode
- Power boost
- Hydraulic options

## NOISE LEVELS

<b>LwA</b>	106 dBA
<b>LpA</b>	76 dBA



## ELECTRICAL CIRCUIT

<b>Voltage output</b>	24 V
<b>Batteries</b>	2 x 12 V - 100 Ah
<b>Alternator</b>	70 A

Automatic isolator switch and 12 V power supply in cab are as standard.



## BRAKE SYSTEM

In order to keep the operator focussed on his work, the travel brake is automatically activated when the pedal is released. The brakes are multi-disc design for smooth operation.

## TYRES

<b>4 Wheels</b>	18 - 19.5XF
<b>8 Wheels with twinning rings</b>	10.00 - 20

## SWING

The swing function is operated by a hydraulic closed circuit coupled with a mechanical reducer integrating an automatic static brake. The hydro-static swing brake is adjustable with 3 settings.

<b>Swing speed</b>	9 rpm
<b>Swing torque</b>	48 kNm

## CAPACITIES

<b>Engine oil</b>	16 l
<b>Cooling circuit</b>	30 l
<b>Fuel tank</b>	360 l
<b>Hydraulic tank</b>	140 l
<b>Swing gear</b>	3.5 l

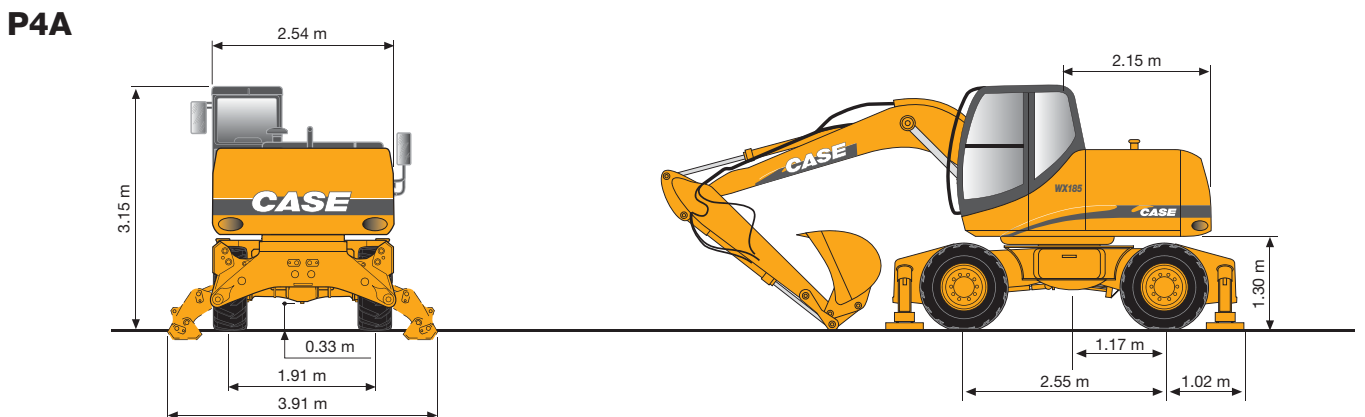
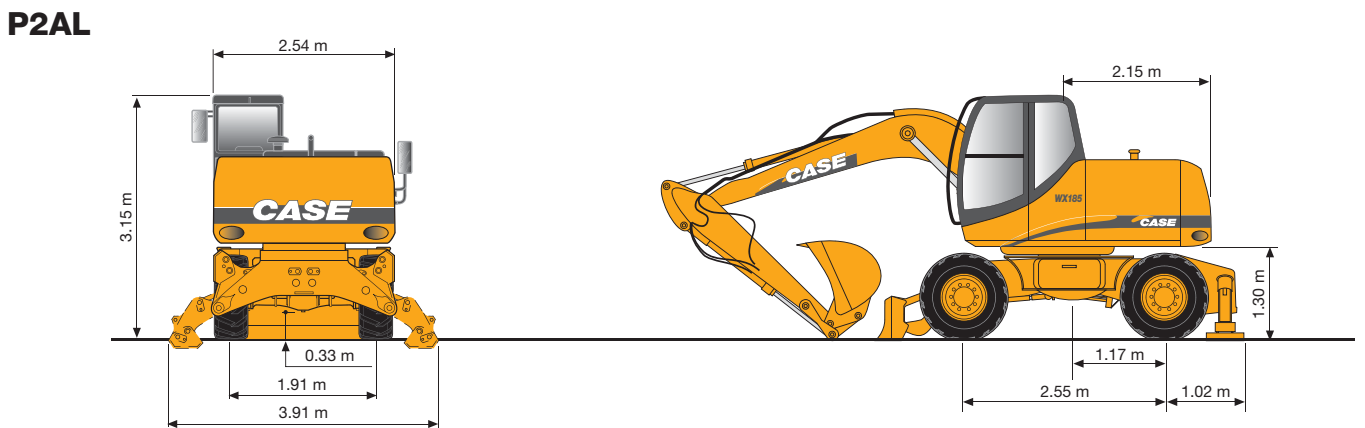
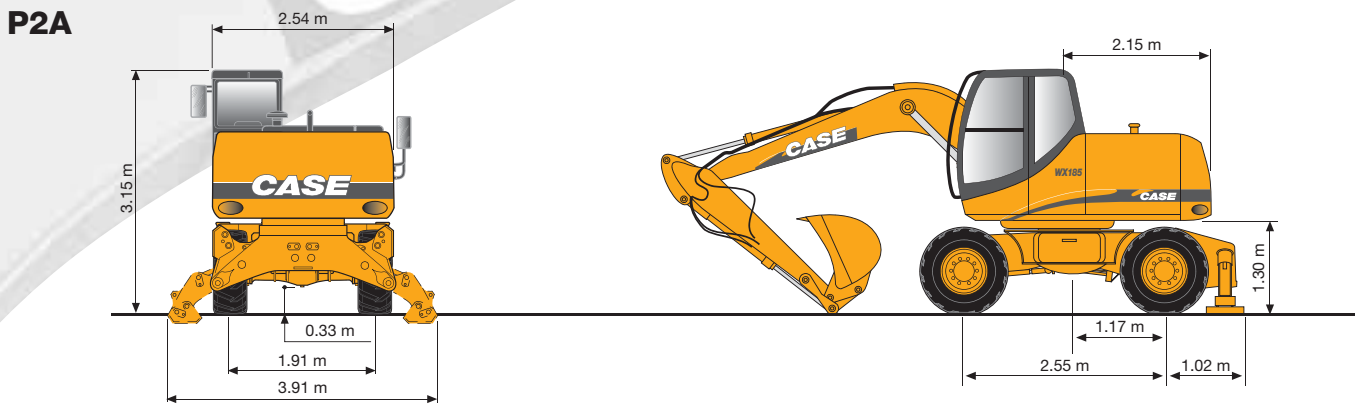
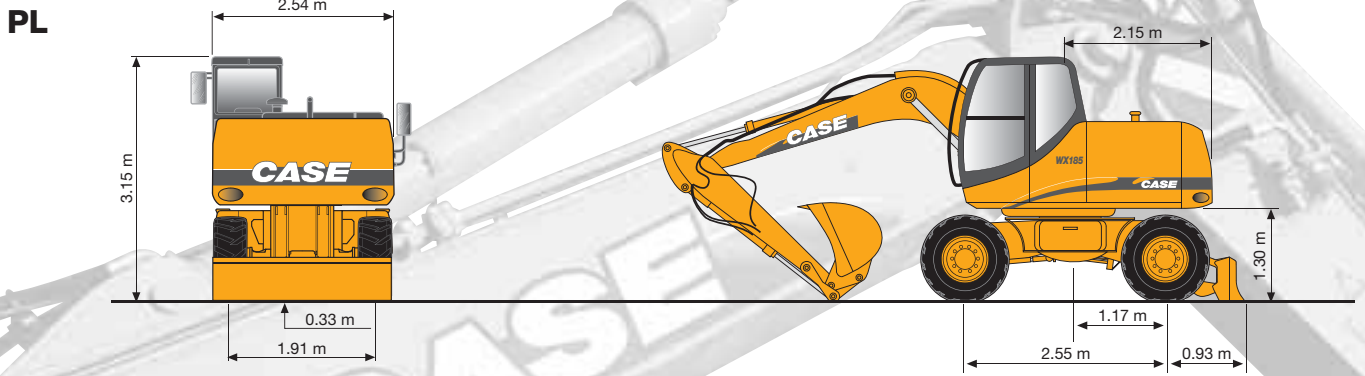
## UPPERSTRUCTURE

The new CASE WX offers as standard a compact upperstructure, integrating a transversal engine position. Even with a reduced tail radius, the service point accessibility has been maintained and the catwalk remains the best access location for servicing.

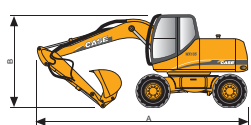
<b>Tail swing radius</b>	2.15 m
--------------------------	--------



# OVERALL DIMENSIONS



# SHIPPING DIMENSIONS / WEIGHT



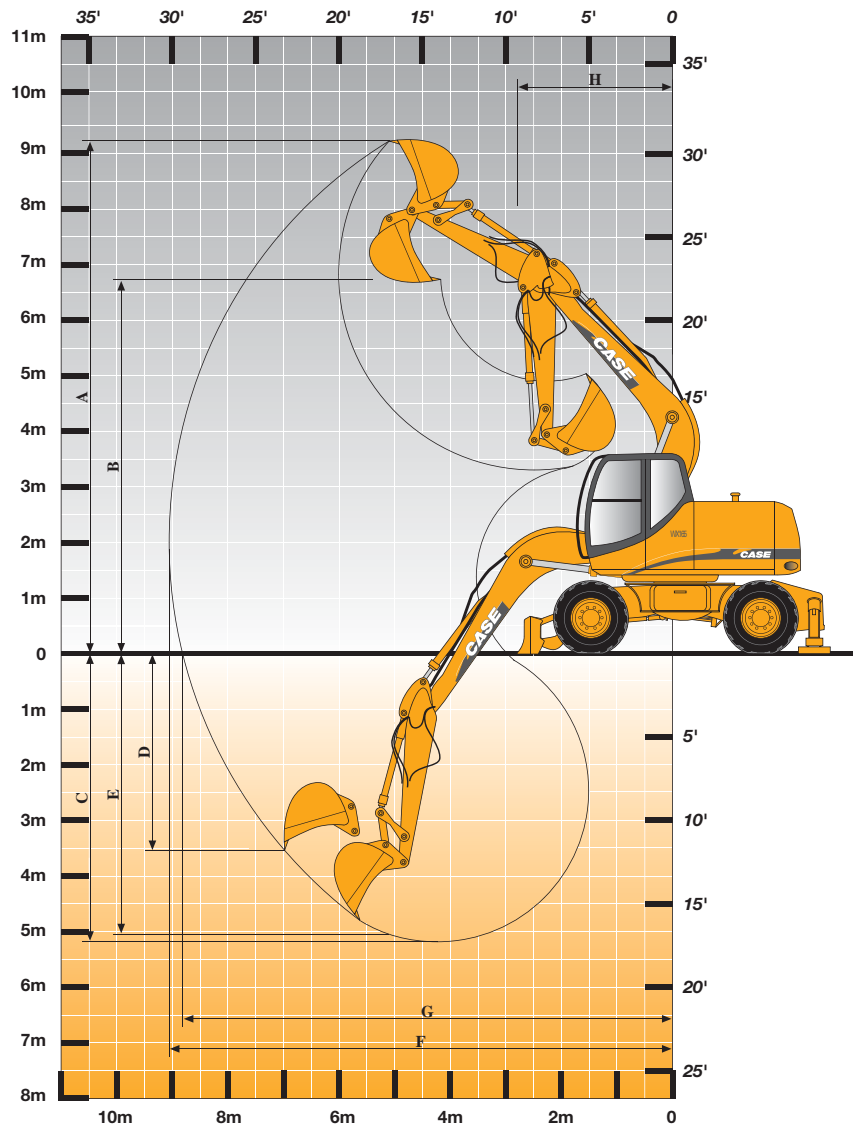
MONO BOOM

ARTICULATED BOOM

	PL			P2A			P2AL			P4A		
	Rear blade			Rear stabilisers			Front blade + rear stab.			4 Stabilisers		
	A	B	kg	A	B	kg	A	B	kg	A	B	kg
	mm	mm		mm	mm		mm	mm		mm	mm	
<b>Dipper 2.00 m</b>	8573	2905	17 866	8573	2905	18 416	8573	2905	18 996	8573	2905	19 456
<b>Dipper 2.40 m</b>	8603	2983	17 926	8603	2983	18 476	8603	2983	19 066	8603	2983	19 526
<b>Dipper 2.80 m</b>	8631	3173	18 016	8631	3173	18 576	8631	3173	19 156	8631	3173	19 616
<b>Dipper 2.00 m</b>	8724	3020	18 680	8724	3020	19 230	8724	3020	19 810	8724	3020	20 270
<b>Dipper 2.40 m</b>	8687	3001	18 740	8687	3001	19 290	8687	3001	19 880	8687	3001	20 340
<b>Dipper 2.80 m</b>	8676	3081	18 830	8676	3081	19 390	8676	3081	19 970	8676	3081	20 430

Weights are indicated fitted with 495 Kg bucket





## WORKING RANGE

	MONO BOOM 5.20 m			ARTICULATED BOOM 5.30 m			
	DIPPER			DIPPER			
	2.0 m	2.4 m	2.8 m	2.0 m	2.4 m	2.8 m	
<b>A Max. digging height</b>	m	9.0	9.2	9.5	9.9	10.2	10.5
<b>B Max. loading height</b>	m	6.4	6.6	6.8	7.2	7.5	7.8
<b>C Max. digging depth</b>	m	5.2	5.6	6.0	5.2	5.6	6.0
<b>D Max. vert. wall digging depth</b>	m	3.6	3.9	4.3	3.7	4.0	4.4
<b>E Max. depth of cut for 8' level bottom</b>	m	4.9	5.4	5.8	5.1	5.5	5.9
<b>F Max. digging reach</b>	m	8.8	9.2	9.6	9.0	9.3	9.7
<b>G Max. digging reach at ground level</b>	m	8.6	9.0	9.4	8.8	9.2	9.6
<b>H Min. front swing radius</b>	m	3.2	3.3	3.3	2.7	2.9	3.0
<b>Bucket breakout force (370 bar)</b>	kN	134	134	134	134	134	134
<b>Stick crowd force (370 bar)</b>	kN	108	99	87	108	99	87

## BUCKETS

### General purpose

Capacity SAE	l	270	380	505	660	750	850	950
Width	mm	500	600	750	900	1000	1100	1200
Weight	kg	350	380	440	495	525	550	590

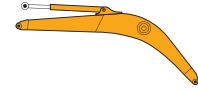
### Heavy duty

Capacity SAE	l					750	850	950
Width	mm					1000	1100	1200
Weight	kg					590	625	665



# LIFTING CAPACITIES

## MONO BOOM



**MONO BOOM:** 5.20 m  
**BUCKET (CECE):** 0.66 m<sup>3</sup>

PL DIPPERSTICK 2.0 m											
Height	Reach				At max reach						
	3.0 m Front	360°	4.5 m Front	360°	6.0 m Front	360°	7.5 m Front	360°	Max reach		
9.0 m											
7.5 m								3.0*	3.0*	4.8	
6.0 m								2.7*	2.7*	6.3	
4.5 m			6.5*	4.6	5.5*	2.8		2.7*	2.0	7.1	
3.0 m			8.1*	4.1	6.1*	2.6	3.2*	1.8	2.8*	1.7	7.6
1.5 m			9.4*	3.7	6.7*	2.4	4.5*	1.7	3.2*	1.6	7.6
0.0 m	6.8*	6.6	9.7*	3.5	6.6	2.3			3.9*	1.6	7.4
-1.5 m	11.9*	6.7	9.0*	3.5	6.5	2.3			5.3	1.9	6.8
-3.0 m	10.1*	6.9	7.4*	3.6					5.3*	2.4	5.8
-4.5 m											

P2A DIPPERSTICK 2.0 m											
Height	Reach				At max reach						
	3.0 m Front	360°	4.5 m Front	360°	6.0 m Front	360°	7.5 m Front	360°	Max reach		
9.0 m											
7.5 m									3.0*	3.0*	4.8
6.0 m									2.7*	2.7*	6.3
4.5 m			6.5*	6.3	5.5*	3.9			2.7*	2.7*	7.1
3.0 m			8.1*	5.8	6.1*	3.7	3.2*	2.5	2.8*	2.5	7.6
1.5 m			9.4*	5.3	6.1*	3.5	4.2	2.4	3.2*	2.3	7.6
0.0 m	6.8*	6.8*	9.7	5.1	5.9	3.3			3.9*	2.4	7.4
-1.5 m	11.9*	10.2	9.0*	5.1	5.9	3.3			4.8	2.7	6.8
-3.0 m	10.1*	10.1*	7.4*	5.2					5.3*	3.5	5.8
-4.5 m											

PL DIPPERSTICK 2.4 m											
Height	Reach				At max reach						
	3.0 m Front	360°	4.5 m Front	360°	6.0 m Front	360°	7.5 m Front	360°	Max reach		
9.0 m											
7.5 m									2.4*	2.4*	5.4
6.0 m					4.2*	3.0			2.1*	2.1*	6.8
4.5 m					5.1*	2.8	2.3*	1.8	2.1*	1.8	7.5
3.0 m	12.8*	7.8	7.6*	4.2	5.8*	2.6	4.4*	1.8	2.2*	1.6	7.9
1.5 m			9.1*	3.7	6.5*	2.4	4.6	1.7	2.5*	1.5	8.0
0.0 m	7.0*	6.5	9.7*	3.5	6.6	2.3	4.5	1.6	3.0*	1.5	7.8
-1.5 m	10.7*	6.5	9.2*	3.4	6.5	2.2			3.9*	1.6	7.3
-3.0 m	11.2*	6.7	7.9*	3.5	5.5*	2.2			5.0*	2.1	6.3
-4.5 m			4.7*	3.7					4.5*	3.5	4.6

P2A DIPPERSTICK 2.4 m											
Height	Reach				At max reach						
	3.0 m Front	360°	4.5 m Front	360°	6.0 m Front	360°	7.5 m Front	360°	Max reach		
9.0 m											
7.5 m									2.4*	2.4*	5.4
6.0 m					4.2*	4.0			2.1*	2.1*	6.8
4.5 m					5.1*	3.9	2.3*	2.3*	2.1*	2.1*	7.5
3.0 m	12.8*	11.6	7.6*	5.9	5.8*	3.7	4.3	2.5	2.2*	2.2	7.9
1.5 m			9.1*	5.4	6.1*	3.5	4.2	2.4	2.5*	2.1	8.0
0.0 m	7.0*	7.0*	9.7*	5.1	5.9	3.3	4.1	2.3	3.0*	2.2	7.8
-1.5 m	10.7*	10.1	9.2*	5.0	5.8	3.2			3.9*	2.4	7.3
-3.0 m	11.2*	10.3	7.9*	5.1	5.5*	3.3			5.0*	3.0	6.3
-4.5 m			4.7*	4.7*					4.5*	4.5*	4.6

PL DIPPERSTICK 2.8 m											
Height	Reach				At max reach						
	3.0 m Front	360°	4.5 m Front	360°	6.0 m Front	360°	7.5 m Front	360°	Max reach		
9.0 m											
7.5 m					2.0*	2.0*			1.9*	1.9*	6.0
6.0 m					4.0*	3.0			1.7*	1.7*	7.2
4.5 m					4.7*	2.9	3.2*	1.8	1.7*	1.6	8.0
3.0 m	11.2*	8.2	7.0*	4.3	5.4*	2.7	4.6*	1.7	1.8*	1.4	8.3
1.5 m	6.6*	6.6*	8.7*	3.8	6.2*	2.4	4.6	1.6	2.0*	1.3	8.4
0.0 m	7.1*	6.4	9.5*	3.4	6.5	2.2	4.5	1.5	2.3*	1.3	8.2
-1.5 m	9.9*	6.4	9.3*	3.3	6.4	2.1	4.5	1.5	3.0*	1.4	7.7
-3.0 m	12.1*	6.5	8.3*	3.3	5.8*	2.1			4.4*	1.8	6.8
-4.5 m	8.3*	6.8	5.8*	3.5					4.5*	2.8	5.3

P2A DIPPERSTICK 2.8 m											
Height	Reach				At max reach						
	3.0 m Front	360°	4.5 m Front	360°	6.0 m Front	360°	7.5 m Front	360°	Max reach		
9.0 m											
7.5 m					2.0*	2.0*			1.9*	1.9*	6.0
6.0 m					4.0*	4.0*			1.7*	1.7*	7.2
4.5 m					4.7*	3.9	3.2*	2.6	1.7*	1.7*	8.0
3.0 m	11.2*	11.2*	7.0*	6.0	5.4*	3.7	4.3	2.5	1.8*	1.8*	8.3
1.5 m	6.6*	6.6*	8.7*	5.4	6.1	3.4	4.2	2.4	2.0*	1.9	8.4
0.0 m	7.1*	7.1*	9.5*	5.1	5.9	3.2	4.1	2.3	2.3*	2.0	8.2
-1.5 m	9.9*	9.9	9.3*	4.9	5.8	3.1	4.0	2.2	3.0*	2.1	7.7
-3.0 m	12.1*	10.1	8.3*	4.9	5.8	3.2			4.4*	2.6	6.8
-4.5 m	8.3*	8.3*	5.8*	5.1					4.5*	4.0	5.3

P2AL DIPPERSTICK 2.0 m											
Height	Reach				At max reach						
	3.0 m Front	360°	4.5 m Front	360°	6.0 m Front	360°	7.5 m Front	360°	Max reach		
9.0 m											
7.5 m									3.0*	3.0*	4.8
6.0 m									2.7*	2.7*	6.3
4.5 m			6.5*	6.5*	5.5*	5.0			2.7*	2.7*	7.1
3.0 m			8.1*	7.7	6.1*	4.8	3.2*	3.2*	2.8*	2.8*	7.6
1.5 m			9.4*	7.2	6.7*	4.6	4.5*	3.2	3.2*	3.1	7.6
0.0 m	6.8*	6.8*	9.7*	6.9	6.9*	4.4			3.9*	3.2	7.4
-1.5 m	11.9*	11.9*	9.0*	6.9	6.5*	4.4			5.3*	3.6	6.8
-3.0 m	10.1*	10.1*	7.4*	7.0					5.3*	4.7	5.8
-4.5 m											

P4A DIPPERSTICK 2.0 m											
Height	Reach				At max reach						
	3.0 m Front	360°	4.5 m Front	360°	6.0 m Front	360°	7.5 m Front	360°	Max reach		
9.0 m											
7.5 m									3.0*	3.0*	4.8
6.0 m									2.7*	2.7*	6.3
4.5 m			6.5*	6.5*	5.5*	5.5*			2.7*	2.7*	7.1
3.0 m			8.1*	8.1*	6.1*	6.1	3.2*	3.2*	2.8*	2.8*	7.6
1.5 m			9.4*	9.4	6.7*	5.9	4.5*	4.1	3.2*	3.2*	7.6
0.0 m	6.8*	6.8*	9.7*	9.1	6.9*	5.7			3.9*	3.9*	7.4
-1.5 m	11.9*	11.9*	9.0*	9.0	6.5*	5.6			5.3*	4.6	6.8
-3.0 m	10.1*	10.1*	7.4*	7.4*					5.3*	5.3*	5.8
-4.5 m											

P2AL DIPPERSTICK 2.4 m											
Height	Reach				At max reach						
	3.0 m Front	360°	4.5 m Front	360°	6.0 m Front	360°	7.5 m Front	360°	Max reach		
9.0 m											
7.5 m									2.4*	2.4*	5.4
6.0 m					4.2*	4.2*			2.1*	2.1*	6.8
4.5 m					5.1*	5.0	2.3*	2.3*	2.1*	2.1*	7.5
3.0 m	12.8*	12.8*	7.6*	7.6*	5.8*	4.8	4.4*	3.3	2.2*	2.2*	7.9
1.5 m			9.1*	7.2	6.5*	4.6	5.1*	3.2	2.5*	2.5*	8.0
0.0 m	7.0*	7.0*	9.7*	6.9	6.8*	4.4	5.2*	3.1	3.0*	2.9	7.8
-1.5 m	10.7*	10.7*	9.2*	6.8	6.6*	4.3			3.9*	3.2	7.3
-3.0 m	11.2*	11.2*	7.9*	6.9	5.5*	4.4			5.0*	4.0	6.3
-4.5 m			4.7*	4.7*					4.5*	4.5*	4.6

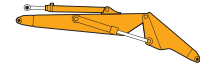
P4A DIPPERSTICK 2.4 m											
Height	Reach				At max reach						
	3.0 m Front	360°	4.5 m Front	360°	6.0 m Front	360°	7.5 m Front	360°	Max reach		
9.0 m											
7.5 m									2.4*	2.4*	5.4
6.0 m					4.2*	4.2*			2.1*	2.1*	6.8
4.5 m					5.1*	5.1*	2.3*	2.3*	2.1*	2.1*	7.5
3.0 m	12.8*	12.8*	7.6*	7.6*	5.8*	5.8*	4.4*	4.2	2.2*	2.2*	7.9
1.5 m			9.1*	9.1*	6.5*	5.9	5.1*	4.1	2.5*	2.5*	8.0
0.0 m	7.0*	7.0*	9.7*	9.1	6.8*	5.7	5.2*	4.0	3.0*	3.0*	7.8
-1.5 m	10.7*	10.7*	9.2*	9.0	6.6*	5.6			3.9*	3.9*	7.3
-3.0 m	11.2*	11.2*	7.9*	7.9*	5.5*	5.5*			5.0*	5.0*	6.3
-4.5 m			4.7*	4.7*					4.5*	4.5*	4.6

P2AL DIPPERSTICK 2.8 m											
Height	Reach				At max reach						
	3.0 m Front	360°	4.5 m Front	360°	6.0 m Front	360°	7.5 m Front	360°	Max reach		
9.0 m											
7.5 m					2.0*	2.0*			1.9*	1.9*	6.0
6.0 m					4.0*	4.0*			1.7*	1.7*	7.2
4.5 m					4.7*	4.7*	3.2*	3.2*	1.7*	1.7*	8.0
3.0 m	11.2*	11.2*	7.0*	7.0*	5.4*	4.8	4.6*	3.3	1.8*	1.8*	8.3
1.5 m	6.6*	6.6*	8.7*	7.2	6.2*	4.6	4.9*	3.2	2.0*	2.0*	8.4
0.0 m	7.1*	7.1*	9.5*	6.9	6.7*	4.3	5.1*	3.1	2.3*	2.3*	8.2
-1.5 m	9.9*	9.9*	9.3*	6.7	6.6*	4.2	4.6*	3.0	3.0*	2.9	7.7
-3.0 m	12.1*	12.1*	8.3*	6.7	5.8*	4.3			4.4*	3.5	6.8
-4.5 m	8.3*	8.3*	5.8*	5.8*					4.5*	4.5*	5.3

P4A DIPPERSTICK 2.8 m											
Height	Reach				At max reach						
	3.0 m Front	360°	4.5 m Front	360°	6.0 m Front	360°	7.5 m Front	360°	Max reach		
9.0 m											
7.5 m					2.0*	2.0*			1.9*	1.9*	6.0
6.0 m					4.0*	4.0*			1.7*	1.7*	7.2
4.5 m											

# LIFTING CAPACITIES

## ARTICULATED BOOM



**ARTICULATED BOOM:** 2.00 m  
**TOP BOOM:** 3.60 m  
**BUCKET (CECE):** 0.66 m<sup>3</sup>

PL DIPPERSTICK 2.0 m											
Height	Reach						At max reach				
	3.0 m Front	3.0 m 360°	4.5 m Front	4.5 m 360°	6.0 m Front	6.0 m 360°	7.5 m Front	7.5 m 360°	Front	360°	Max reach
9.0 m											
7.5 m			5.0*	4.9					3.1*	3.1*	5.1
6.0 m			5.5*	5.0	4.5*	3.0			2.7*	2.5	6.5
4.5 m	8.7*	8.7*	6.3*	4.9	5.1*	3.1			2.7*	1.9	7.3
3.0 m	11.9*	8.7	7.5*	4.7	5.6*	3.0	3.9*	1.8	2.8*	1.6	7.7
1.5 m	12.5*	8.5	9.1*	4.7	6.3*	2.9	4.3*	1.7	3.1*	1.5	7.8
0.0 m	15.0*	8.3	9.6*	4.5	6.8	2.6	4.0*	1.6	3.6*	1.5	7.6
-1.5 m	16.2*	7.8	9.8*	4.1	6.9	2.4			4.7*	1.7	7.1
-3.0 m	16.7*	7.5	9.6*	3.8	4.8*	2.3			4.7*	2.3	6.1
-4.5 m											

P2A DIPPERSTICK 2.0 m											
Height	Reach						At max reach				
	3.0 m Front	3.0 m 360°	4.5 m Front	4.5 m 360°	6.0 m Front	6.0 m 360°	7.5 m Front	7.5 m 360°	Front	360°	Max reach
9.0 m											
7.5 m			5.0*	5.0*					3.1*	3.1*	5.1
6.0 m			5.5*	5.5*	4.5*	4.1			2.7*	2.7*	6.5
4.5 m	8.7*	8.7*	6.3*	6.3*	5.1*	4.1			2.7*	2.7*	7.3
3.0 m	11.9*	11.8	7.5*	6.2	5.6*	4.1	3.9*	2.6	2.8*	2.4	7.7
1.5 m	12.5*	11.7	9.1*	6.1	6.3	4.0	4.3	2.5	3.1*	2.2	7.8
0.0 m	15.0*	11.8	9.6*	6.2	6.3	3.7	4.0*	2.4	3.6*	2.3	7.6
-1.5 m	16.2*	11.7	9.8*	5.9	6.2	3.5			4.6	2.6	7.1
-3.0 m	16.7*	11.3	9.6*	5.4	4.8*	3.3			4.7*	3.3	6.1
-4.5 m											

PL DIPPERSTICK 2.4 m											
Height	Reach						At max reach				
	3.0 m Front	3.0 m 360°	4.5 m Front	4.5 m 360°	6.0 m Front	6.0 m 360°	7.5 m Front	7.5 m 360°	Front	360°	Max reach
9.0 m											
7.5 m			4.8*	4.8*					2.5*	2.5*	5.7
6.0 m			5.2*	5.0	4.5*	3.1			2.2*	2.2	7.0
4.5 m			5.7*	4.9	4.7*	3.1	3.3*	1.9	2.2*	1.7	7.8
3.0 m	12.4*	8.6	7.0*	4.7	5.3*	3.1	4.2*	1.8	2.2*	1.5	8.1
1.5 m	12.2*	8.4	8.6*	4.6	6.0*	3.0	4.8	1.8	2.4*	1.4	8.2
0.0 m	14.2*	8.4	9.3*	4.5	6.6*	2.7	4.6	1.6	2.8*	1.4	8.0
-1.5 m	16.0*	7.8	9.6*	4.2	6.8	2.4			3.5*	1.5	7.5
-3.0 m	16.6*	7.7	10.0*	3.8	6.1*	2.3			4.5*	1.9	6.6
-4.5 m	12.5*	7.3							9.4*	5.3	3.6

P2A DIPPERSTICK 2.4 m											
Height	Reach						At max reach				
	3.0 m Front	3.0 m 360°	4.5 m Front	4.5 m 360°	6.0 m Front	6.0 m 360°	7.5 m Front	7.5 m 360°	Front	360°	Max reach
9.0 m											
7.5 m			4.8*	4.8*					2.5*	2.5*	5.7
6.0 m			5.2*	5.2*	4.5*	4.1			2.2*	2.2*	7.0
4.5 m			5.7*	5.7*	4.7*	4.1	3.3	2.6	2.2*	2.2*	7.8
3.0 m	12.4*	11.8	7.0*	6.2	5.3*	4.0	4.2	2.6	2.2*	2.2	8.1
1.5 m	12.2*	11.5*	8.6*	6.1	6.0*	4.0	4.4	2.5	2.4*	2.0	8.2
0.0 m	14.2*	11.6	9.5*	6.1	6.2	3.8	4.2	2.4	2.2*	2.1	8.0
-1.5 m	16.0*	11.7	9.6*	5.9	6.2	3.5			3.5*	2.3	7.5
-3.0 m	16.6*	11.5	10.0*	5.5	6.0	3.3			4.5*	2.8	6.6
-4.5 m	12.5*	11.0							9.4*	7.9	3.6

PL DIPPERSTICK 2.8 m											
Height	Reach						At max reach				
	3.0 m Front	3.0 m 360°	4.5 m Front	4.5 m 360°	6.0 m Front	6.0 m 360°	7.5 m Front	7.5 m 360°	Front	360°	Max reach
9.0 m									2.7*	2.7*	4.3
7.5 m					2.9*	2.9*			2.0*	2.0*	6.3
6.0 m					4.1*	3.1			1.8*	1.8*	7.5
4.5 m			5.3*	4.9	4.4*	3.1	3.5*	1.9	1.7*	1.5	8.2
3.0 m	10.8*	8.7	6.6*	4.7	5.0*	3.0	4.3*	1.9	1.8*	1.3	8.5
1.5 m	12.0*	8.3	8.1*	4.5	5.7*	3.0	4.6*	1.8	1.9*	1.2	8.6
0.0 m	13.5*	8.4	9.3*	4.5	6.4*	2.8	4.7	1.7	2.2*	1.2	8.4
-1.5 m	15.5*	7.9	9.5*	4.2	6.7	2.5	4.5	1.5	2.7*	1.3	7.9
-3.0 m	16.2*	7.6	9.8*	3.9	6.6*	2.2			3.7*	1.6	7.1
-4.5 m	14.6*	7.2	7.7*	3.6					6.2*	3.1	5.0

P2A DIPPERSTICK 2.8 m											
Height	Reach						At max reach				
	3.0 m Front	3.0 m 360°	4.5 m Front	4.5 m 360°	6.0 m Front	6.0 m 360°	7.5 m Front	7.5 m 360°	Front	360°	Max reach
9.0 m									2.7*	2.7*	4.3
7.5 m					2.9*	2.9*			2.0*	2.0*	6.3
6.0 m					4.1*	4.1			1.8*	1.8*	7.5
4.5 m			5.3*	5.3*	4.4*	4.1	3.5*	2.7	1.7*	1.7*	8.2
3.0 m	10.8*	10.8*	6.6*	6.2	5.0*	4.0	4.3*	2.7	1.8*	1.8*	8.5
1.5 m	12.0*	11.5	8.1*	6.0	5.7*	3.9	4.4	2.6	1.9*	1.8	8.6
0.0 m	13.5*	11.6	9.3*	6.0	6.1	3.9	4.2	2.4	2.2*	1.9	8.4
-1.5 m	15.5*	11.7	9.5*	5.9	6.3	3.6	4.1	2.3	2.7*	2.0	7.9
-3.0 m	16.2*	11.4	9.8*	5.6	6.0	3.3			3.7*	2.5	7.1
-4.5 m	14.6*	10.9	7.7*	5.3					6.2*	4.5	5.0

P2AL DIPPERSTICK 2.0 m											
Height	Reach						At max reach				
	3.0 m Front	3.0 m 360°	4.5 m Front	4.5 m 360°	6.0 m Front	6.0 m 360°	7.5 m Front	7.5 m 360°	Front	360°	Max reach
9.0 m											
7.5 m			5.0*	5.0*					3.1*	3.1*	5.1
6.0 m			5.5*	5.5*	4.5*	4.5*			2.7*	2.7*	6.5
4.5 m	8.7*	8.7*	6.3*	6.3*	5.1*	5.1*			2.7*	2.7*	7.3
3.0 m	11.9*	11.9*	7.5*	7.5*	5.6*	5.0	3.9*	3.3	2.8*	2.8*	7.7
1.5 m	12.5*	12.5*	9.1*	7.7	6.3*	5.0	4.3*	3.3	3.1*	3.0	7.8
0.0 m	15.0*	15.0*	9.6*	7.8	6.8*	4.9	4.0*	3.2	3.6*	3.1	7.6
-1.5 m	16.2*	15.9	9.8*	7.8	6.9*	4.6			4.7*	3.4	7.1
-3.0 m	16.7*	16.1	9.6*	7.3	4.8*	4.5			4.7*	4.4	6.1
-4.5 m											

P4A DIPPERSTICK 2.0 m											
Height	Reach						At max reach				
	3.0 m Front	3.0 m 360°	4.5 m Front	4.5 m 360°	6.0 m Front	6.0 m 360°	7.5 m Front	7.5 m 360°	Front	360°	Max reach
9.0 m											
7.5 m			5.0*	5.0*					3.1*	3.1*	5.1
6.0 m			5.5*	5.5*	4.5*	4.5*			2.7*	2.7*	6.5
4.5 m	8.7*	8.7*	6.3*	6.3*	5.1*	5.1*			2.7*	2.7*	7.3
3.0 m	11.9*	11.9*	7.5*	7.5*	5.6*	5.6*	3.9*	3.9*	2.8*	2.8*	7.7
1.5 m	12.5*	12.5*	9.1*	9.1*	6.3*	6.1	4.3*	4.2	3.1*	3.1*	7.8
0.0 m	15.0*	15.0*	9.6*	9.6*	6.8*	6.2	4.0*	4.0	3.6*	3.6*	7.6
-1.5 m	16.2*	16.2*	9.8*	9.7	6.9*	5.9			4.7*	4.4	7.1
-3.0 m	16.7*	16.7*	9.6*	9.6	4.8*	4.5*			4.7*	4.7*	6.1
-4.5 m											

P2AL DIPPERSTICK 2.4 m											
Height	Reach						At max reach				
	3.0 m Front	3.0 m 360°	4.5 m Front	4.5 m 360°	6.0 m Front	6.0 m 360°	7.5 m Front	7.5 m 360°	Front	360°	Max reach
9.0 m											
7.5 m			4.8*	4.8*					2.5*	2.5*	5.7
6.0 m			5.2*	5.2*	4.5*	4.5*			2.2*	2.2*	7.0
4.5 m			5.7*	5.7*	4.7*	4.7*	3.3*	3.3*	2.2*	2.2*	7.8
3.0 m	12.4*	12.4*	7.0*	7.0*	5.3*	5.0	4.2*	3.4	2.2*	2.2*	8.1
1.5 m	12.2*	12.2*	8.6*	7.6	6.0*	4.9	4.8*	3.3	2.4*	2.4*	8.2
0.0 m	14.2*	14.2*	9.5*	7.7	6.6*	4.9	4.8*	3.2	2.8*	2.8	8.0
-1.5 m	16.0*	15.6	9.6*	7.8	6.8*	4.6			3.5*	3.1	7.5
-3.0 m	16.6*	16.3	10.0*	7.4	6.1*	4.4			4.5*	3.8	6.6
-4.5 m	12.5*	12.5*							9.4*	9.4*	3.6

P4A DIPPERSTICK 2.4 m											
Height	Reach						At max reach				
	3.0 m Front	3.0 m 360°	4.5 m Front	4.5 m 360°	6.0 m Front	6.0 m 360°	7.5 m Front	7.5 m 360°	Front	360°	Max reach
9.0 m											
7.5 m			4.8*	4.8*					2.5*	2.5*	5.7
6.0 m			5.2*	5.2*	4.5*	4.5*			2.2*	2.2*	7.0
4.5 m			5.7*	5.7*	4.7*	4.7*	3.3*	3.3*	2.2*	2.2*	7.8
3.0 m	12.4*	12.4*	7.0*	7.0*	5.3*	5.3*	4.2*	4.2*	2.2*	2.2*	8.1
1.5 m	12.2*	12.2*	8.6*	8.6*	6.0*	6.0	4.8*	4.2	2.4*	2.4*	8.2
0.0 m	14.2*	14.2*	9.5*	9.4	6.6*	6.0	4.8*	4.1	2.8*	2.8*	8.0
-1.5 m	16.0*	16.0*	9.6*	9.5	6.8*	5.9			3.5*	3.5*	7.5
-3.0 m	16.6*	16.6*	10.0*	9.7	6.1*	5.8			4.5*	4.5*	6.6
-4.5 m	12.5*	12.5*							9.4*	9.4*	3.6

P2AL DIPPERSTICK 2.8 m											
Height	Reach						At max reach				
	3.0 m Front	3.0 m 360°	4.5 m Front	4.5 m 360°	6.0 m Front	6.0 m 360°	7.5 m Front	7.5 m 360°	Front	360°	Max reach
9.0 m									2.7*	2.7*	4.3
7.5 m					2.9*	2.9*			2.0*	2.0*	6.3
6.0 m					4.1*	4.1*			1.8*	1.8*	7.5
4.5 m			5.3*	5.3*	4.4*						

# WX185

## BASIC EQUIPMENT

- Robust, shielded arc-welded, welded modular chassis in box section design
- Patented disc brakes for jolt-free work
- PowerShift gear box
- Large toolbox under the step
- Latest generation CASE Family III Tier 2 diesel engines, in accordance to European emissions standards
- Direct injection with turbo charger and charge air cooling
- Water-cooled, low-consumption and low-exhaust in accordance to EU directive
- Automatic battery main switch (coupled to ignition key)
- Electronic immobiliser
- Pump Management System
- Electrohydraulic servo control
- Triple-pump-hydraulic system with two service pumps and separate swing pump
  - Engine and pump monitoring by power limit control
  - 8 selectable power stages
  - Automatic power increase in DRIVE stage
  - Comfortable Inching control
  - Encased ball bearing slew ring with long-life lubrication
  - Swing drive with low-wearing disc brake
  - Noise-insulated and flexibly mounted cabin in soft design
    - Tinted safety glazing all around, full up and over windscreen
    - Sun blinds, large roof window, transparent rain protection
    - LCD with integrated error diagnosis function
    - Steering column incline infinitely variable
    - Ergonomic design of arm rests and foot pedals
    - Driver air suspension seat individually adjustable for height and incline
    - Consoles adjustable for height and length
    - 12 V electrical auxiliary supply in cab
    - Forward / Reverse shifting on joystick
    - Independent control of blade and each stabiliser
      - Automatic axle locking system
      - Automatic working brake
      - Travel and swing hydrostatic braking
    - Cab headlights
    - Electric diesel filling system
    - Powerboost system
    - Centralised control of blade and stabilisers on left joystick

## POSSIBLE ADDITIONAL OPTIONS

- Air conditioning
- 30 km/h forward speed
- Single or twin tyres
- Dozer blade with hydraulic parallel guidance
- Stabilisers with large, lockable pads for secure grip on uneven ground
- Transport holder for clamshell grab
- Intermediate bearing for prop shaft
- Central greasing nipple on boom
- Cooling box
- Radio
- Additional working lights
- Auxiliary heating
- Front and roof guards
- FOPS protection for cab
- Armoured glass for front window
- Safety load hook on coupler
- Safety valves for hoist mode
- Hydraulic system for hammer, grab, shears

ALL  
YOU  
NEED  
IS  
CASE

## SERVICE & SUPPORT THE CASE DEALER YOUR PROFESSIONAL PARTNER

World-class construction equipment is just the start with Case. Your local Case dealer is a total solutions provider. Look to Case dealers to help find the right size machine, attachments and options to meet the demands of your job.

Case dealers help you maximise machine uptime - and profitability. That means you can focus on the job, knowing your Case dealer is never far away.

Case dealers stand behind the equipment they sell, with skilled service technicians fully equipped to resolve your maintenance and repair issues and, the support of a global parts network, recognised as second to none in the industry.

But it doesn't stop there. Through CNH Capital, your local Case dealer offers flexible financing options, leasing packages and insurance services to protect your investment.

When you need more than just equipment, Case dealers deliver. More.



### WORLDWIDE CASE CONSTRUCTION EQUIPMENT CONTACT INFORMATION

#### EUROPE/AFRICA/MIDDLE EAST:

CENTRE D'AFFAIRES EGB  
5, AVENUE GEORGES BATAILLE - BP 40401  
60671 LE PLESSIS-BELLEVILLE - FRANCE

#### NORTH AMERICA/MEXICO:

700 STATE STREET  
RACINE, WI 53404 U.S.A.

#### LATIN AMERICA:

AV. GENERAL DAVID SARNOFF 2237  
32210 - 900 CONTAGEM - MG  
BELO HORIZONTE BRAZIL

#### ASIA PACIFIC:

UNIT 1 - 1 FOUNDATION PLACE - PROSPECT  
NEW SOUTH WALES - 2148 AUSTRALIA

#### CHINA:

No. 29, INDUSTRIAL PREMISES, No. 376,  
DE BAO ROAD, WAIGAOQIAO FTZ, PUDONG,  
SHANGHAI, 200131, P.R.C.

**NOTE:** Standard and optional fittings can vary according to the demands and specific regulations of each country. The illustrations may include optional rather than standard fittings - consult your Case dealer. Furthermore, CNH reserves the right to modify machine specifications without incurring any obligation relating to such changes.

**CNH UK Ltd.**  
Armstrong House  
The Finningley Estate  
Hayfield Lane  
Doncaster  
DN9 3XA  
Fax +44 (0)1302 802126

Conforms to directive 98/37/CE



[www.casece.com](http://www.casece.com)

**CASE**  
PROFESSIONAL PARTNER