

# CASE

CONSTRUCTION

## TELESCOPIC HANDLERS

**TX130-30/TX130-33**  
**TX130-40/TX130-43**  
**TX130-45**

**TX140-43**  
**TX140-45**

**TX170-45**



Mast heights  
Lift capacities  
Power of engines

13 m/14 m/17 m  
3 to 4.5 t  
80 hp to 118 hp

P R O F E S S I O N A L P A R T N E R



## SECURE BASE

Case TX telescopic handlers offer impressive stability through a combination of a long wheelbase, low boom pivot point and optimised counterweight. Machines up to 3 ton capacity can lift without the need for stabilisers, while heavy duty machines offer narrow (ie: within the width of machine) stabiliser legs on models with up to 3.3 ton or 4.3 ton lift capacity, and wide (ie: "butterfly" spread) stabilisers for maximum strength on 4.5 ton handlers.

**Total stability. Maximum lift capacity.**

## POWER TO WORK

The TX telehandler range is powered by high output Case engines, offering 80 hp and 95 hp on TX130-30 and TX130-33 models and now 118 hp from a new climate friendly Tier III low emissions engine in the TX130-40 and above. This engine combines low fuel consumption with a strong 516 Nm of torque, enough to pull the machine through the toughest of site conditions. All engines are mounted longitudinally on the side of the machine, for a maximum transfer of power and ease of service.

**High output. Low emissions and consumption.**

## REACHING HIGH

Robust boom construction with powerful hydraulic cylinders, or chain extension on some 13 m models, offers excellent range of working heights up to 17 m. Hydraulic frame levelling, along with audible and visual safe load indication ensures secure placing of loads at any height or reach.

**Design integrity. Maximum capacity.**



## ALL ROUND EXCELLENCE

With a curved front screen and maximum glazed area in side and rear windows, the TX cab offers superb visibility all round the machine. A low engine canopy to the right of the machine and a low mounted control panel to the front, ensure that the operator always has a clean line of sight for efficiency and safety. Reduced height mast pivot points ensure that the operator has good visibility even to the rear of the telescopic handler. Both the cab door and the right hand window can be opened independently, locking back against the cab structure for security.

**Unparalleled visibility. Safe operation.**

## ALL TERRAIN CAPABILITY

Powershift transmissions handle high power delivery without heat build-up. Smooth gear shifting and three steering modes ensure that the operator can work in the toughest site conditions. Four wheel steering greatly reduces turning circle, while crab steer offers the perfect solution when working against obstacles.

**Outstanding manoeuvrability. Reliable components.**

## TOTAL CONTROL

With standard pilot controls for all hydraulic functions the Case TX telehandler is an easy machine to drive. Load sensing, flow sharing hydraulics, in combination with a smooth Powershift transmission, ensure independent movement of all hydraulic functions, with precision and accuracy. Low effort control levers reduce operator fatigue, ensuring high productivity and maximum safety throughout the working day.

**Smooth operation. Precision control.**

## MAINTENANCE ACCESS

Side-mounted engine with full length lift-up canopy ensures access for ground level servicing and regular maintenance. All filters and fill points easily accessible, for minimum downtime and maximum productivity. Main hydraulic valve mounted at the rear of the machine, can be reached through separate panel without having to move other components.

**Design integrity. Minimum downtime.**

## ATTACHMENT CARRIER

Case dealers offer a wide range of options, tyres and attachments to perfectly customise the machine to your individual requirements. Mechanical or hydraulic carriers can be specified along with optional sideshift capability. Customers can choose a carrier compatible with Case attachments or one designed to fit their existing buckets and work tools. Attachments include pallet forks, 4-in-1 buckets, crane booms, road sweepers, cement mixers and a range of personnel platforms, with or without radio control.

**Multiple use. Versatility built-in.**



## TWO TELESCOPIC DESIGNS



The TX range uses robust telescopic booms with inherent rigidity and strength to allow many hours of safe lifting. The TX130-30 and TX130-33 have a chain driven extension for the second boom section, while all larger machines use an internally mounted hydraulic twin cylinder to extend the boom. All models are equipped with safety valves on the lift, tilt and stabiliser cylinders, to prevent the boom dropping in the case of hose failure.

Visual and audible warning devices signaling overload are incorporated in the upper right corner of all cabs. On TX130-40 and above models, a strict safety device automatically prevents any hazardous extension of the mast. This feature makes the TX130-40 and above models suitable for the use of man platforms. Case provides a complete range of man baskets, fixed, orientable or even remotely radio controlled for tasks requiring to carry personnel.

## HIGH LOAD CAPACITIES



There is a Case TX telehandler for every task on the construction site. Customers can choose from 13 m, 14 m and 17 m working heights, with lifting capacities from 3 to 4.5 tons. The smallest machines can be used without the need for stabilisers and there are several models with narrow stabilisers that open within the machine width. Wide stabiliser legs (standard on 17 meter model) are provided for maximum stability while lifting on the heavier models, giving Case some of the highest lifting capacities in the market.

## HIGH MANOEUVRABILITY DRIVE LINE



TX machines are incredibly agile, moving rapidly about the site thanks to a four-speed Powershift transmission and the easy to use three mode steering system. This combination of proven components ensures that there is no costly heat build-up in the transmission, even when travelling at high speeds on the road, where permitted.

The use of flow sharing hydraulics, along with the Powershift transmission, ensures precision work can be accomplished with ease. The single servo lever that controls all hydraulic functions also has a transmission cut-out button, giving the operator total control of the machine without having to move a hand away from the servo or the steering wheel. This ensures maximum safe use on site and reduced operator effort, cutting operator fatigue and boosting productivity.

## OPERATOR'S CAB

From its initial conception the Case telehandler cab has led the field in terms of ergonomics, visibility and safety. Its curved top with wrap around glazing offers unparalleled visibility of the boom and the load. A glazed door, with opening window, provides easy access to the cab and the deep glass, low engine canopy and low boom pivot point ensure an excellent view all around the machine. This is a major contributing factor to increased site safety and prevents damage to the machine when manoeuvring in confined spaces. All instruments are placed in a low level console to further boost visibility to the front of the machine. Simple, single lever servo controls are easy to use and the operator has plenty of space in the ROPS/FOPS cab to remain comfortable throughout the day.



## ENGINE



The TX telescopic handler range is powered by a 4.5 litre Case engine, naturally aspirated or "turbo" on the TX130-30/TX130-30 turbo and TX130-33/TX130-33 turbo. All larger machines are equipped with a low emission Tier III climate friendly engine, that with turbocharging and aftercooling offers a healthy 118 hp and a powerful 516 Nm of torque.

Mounted on the side of the machine, the engine is easily accessible for all regular service and maintenance work, with filters and fill points all reached from ground level. Long service intervals and compatibility with the Case electronic service tool (EST) ensure minimum downtime, increasing profitability and keeping your machines at work.

## FLOW SHARING HYDRAULICS



A fully load sensing hydraulic system, with flow sharing technology, allows independent use of all hydraulic functions. All major operations, such as lift and lower and forward reach, are controlled from a single servo lever, allowing the operator to keep one hand on the steering wheel when manoeuvring to a loading position. The flow sharing system ensures smooth lifting and reach and provides power when working with varied attachments. The main hydraulic valve is mounted at the rear of the machine and is fully accessible through a separate cover, without having to remove additional components, cutting diagnostic and maintenance time and boosting profitability.

## POWERSHIFT 3 STEERING MODES



A proven Powershift transmission delivers four forward and three reverse speeds, with no heat build up despite high manoeuvring speeds. Working in combination with the flow sharing hydraulic system, the Powershift transmission offers precise control with high tractability, ideal for use on hard standing or in tough construction project conditions.

Three mode steering, offering two wheel, four wheel and crab modes, ensures even the largest model in the range has compact and agile manoeuvring dimensions. Four wheel steering provides the smallest possible turning radius, while crab steer offers the perfect solution when working alongside structures or for backfilling when working with a bucket.









# SPECIFICATIONS

## TX130-30

without stabilizers

## TX130-33

with narrow stabilisers

### ENGINE

Make \_\_\_\_\_ CNH 4NA 4.5  
 Power \_\_\_\_\_ 60 kW / 80 hp  
 Type \_\_\_\_\_ Natural Aspiration  
 Total displacement \_\_\_\_\_ 4.5 l  
 Maximum torque \_\_\_\_\_ 320 Nm @1400 rpm

### TRANSMISSION

Type \_\_\_\_\_ Powershift  
 Forward/Reverse speeds \_\_\_\_\_ 4/3  
 Maximum speed on road\*\* \_\_\_\_\_ 28 km/h

### HYDRAULIC SYSTEM

Type \_\_\_\_\_ Load Sensing  
 Hydraulic controls \_\_\_\_\_ Servo  
 Simultaneous movement \_\_\_\_\_ yes  
 Hydraulic pump \_\_\_\_\_ gear  
 Hydraulic flow \_\_\_\_\_ 115 l/min  
 Hydraulic pressure \_\_\_\_\_ 240 bar

### CAPACITIES

Fuel tank \_\_\_\_\_ 135 l  
 Hydraulic tank \_\_\_\_\_ 180 l

### TYRES

15.5 x 22.5 \_\_\_\_\_ MICHELIN  
 400/80 x 20 \_\_\_\_\_ SOLIDEAL  
 400/80 x 24 \_\_\_\_\_ DUNLOP  
 400/70 x 20 \_\_\_\_\_ MITAS

## TX130-30

Turbo

without stabilizers

## TX130-30

Turbo

with narrow stabilisers

### ENGINE

Make \_\_\_\_\_ CNH 4TC 4.5  
 Power \_\_\_\_\_ 71 kW / 95 hp  
 Type \_\_\_\_\_ Turbo  
 Total displacement \_\_\_\_\_ 4.5 l  
 Maximum torque \_\_\_\_\_ 400 Nm @1400 rpm

### TRANSMISSION

Type \_\_\_\_\_ Powershift  
 Forward/Reverse speeds \_\_\_\_\_ 4/3  
 Maximum speed on road\*\* \_\_\_\_\_ 34 km/h

### HYDRAULIC SYSTEM

Type \_\_\_\_\_ Load Sensing  
 Hydraulic controls \_\_\_\_\_ Servo  
 Simultaneous movement \_\_\_\_\_ yes  
 Hydraulic pump \_\_\_\_\_ gear  
 Hydraulic flow \_\_\_\_\_ 115 l/min  
 Hydraulic pressure \_\_\_\_\_ 240 bar

### CAPACITIES

Fuel tank \_\_\_\_\_ 135 l  
 Hydraulic tank \_\_\_\_\_ 180 l

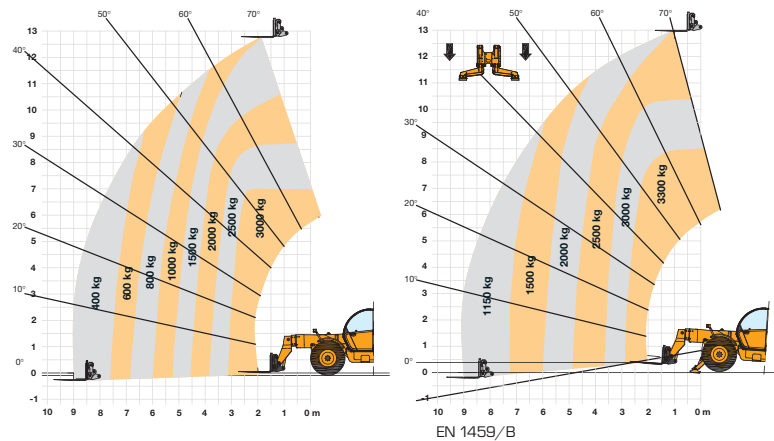
### TYRES

15.5 x 22.5 \_\_\_\_\_ MICHELIN  
 400/80 x 20 \_\_\_\_\_ SOLIDEAL  
 400/80 x 24 \_\_\_\_\_ DUNLOP  
 400/70 x 20 \_\_\_\_\_ MITAS

\*\* Max. speed limited according to the country's legislations

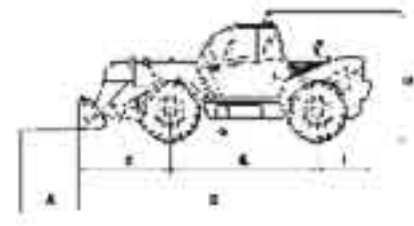
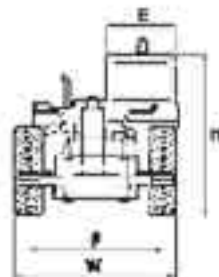
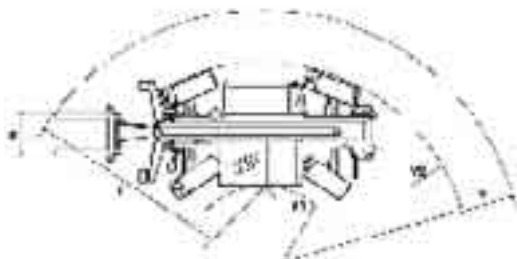
## TX130-30

## TX130-33



### PERFORMANCE

		TX 130-30 without stabilisers	TX 130-33 with narrow stabilisers
Maximum lift capacity (at 500 mm from fork heel)	kg	3000	3300
Maximum lift height	m	12.7	13.0
Lift capacity at maximum reach	kg	400	1150
Lift capacity at maximum lift height	kg	1500	2500
Reach fully raised	m	2.00	1.00
Maximum forward reach	m	8.75	8.75
Height with max load	m	6.80	8.40
Breakout force	daN	7750	7750
Operating weight	kg	9550	9900



DIMENSIONS	A	B	C	D	E	F	G	H	I	K	T	U	V	V1	V2	W
With 24" rims	1200	3120	1730	5900	1000	2050	402	2450	1050	1260	4600	2730	5445	980	3890	2445
With 20" rims	1200	3120	1730	5900	1000	2040	390	2435	1050	1260	4600	2715	5445	980	3890	2445

# SPECIFICATIONS

## TX130-40

without stabilizers

## TX130-43

with narrow stabilizers

## TX130-45

with wide stabilizers

### ENGINE

Make \_\_\_\_\_ TIER 3 - Turbo after cooled  
 Power \_\_\_\_\_ 88 kW / 118 hp  
 Type \_\_\_\_\_ 4AA  
 Total displacement \_\_\_\_\_ 4.5 l  
 Maximum torque \_\_\_\_\_ 516 Nm @1400 rpm  
 EST (electronic service tool) \_\_\_\_\_ Compatible

### TRANSMISSION

Type \_\_\_\_\_ Powershift  
 Forward/Reverse speeds \_\_\_\_\_ 4/3  
 Maximum speed on road\*\* \_\_\_\_\_ 35 km/h  
 \*\* Max. speed limited according to the country's legislations

### HYDRAULIC SYSTEM

Type \_\_\_\_\_ Load Sensing  
 Hydraulic controls \_\_\_\_\_ Servo  
 Simultaneous movement \_\_\_\_\_ yes  
 Hydraulic pump \_\_\_\_\_ gear

Hydraulic flow \_\_\_\_\_ 115 l/min  
 Hydraulic pressure \_\_\_\_\_ 240 bar

### CAPACITIES

Fuel tank \_\_\_\_\_ 135 l  
 Hydraulic tank \_\_\_\_\_ 180 l

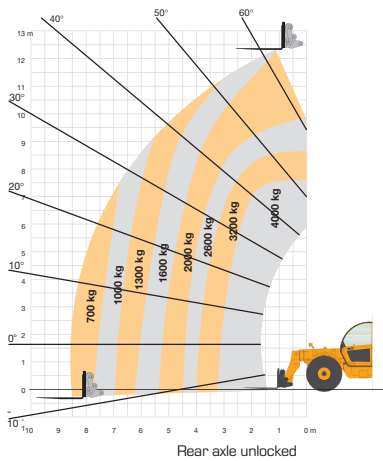
### TYRES

13.0 x 24 \_\_\_\_\_ GOODYEAR  
 15.5 X 25 \_\_\_\_\_ MICHELIN  
 405/70 x 24 \_\_\_\_\_ MITAS  
 400/80 x 24 \_\_\_\_\_ DUNLOP

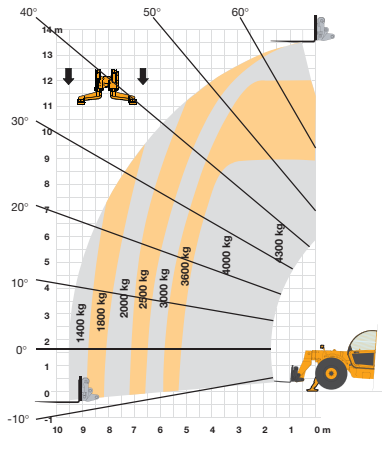
### NOISE

Internal \_\_\_\_\_ 77 LpA  
 External \_\_\_\_\_ 103 LpA

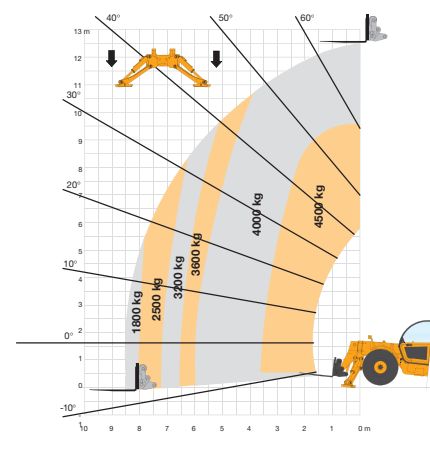
### TX130-40



### TX130-43

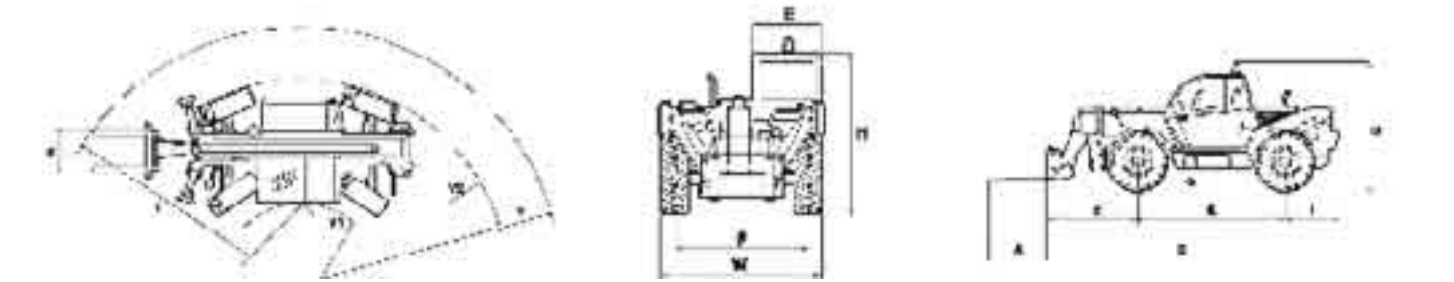


### TX130-45



### PERFORMANCE

		TX 130-40 without stabilizers	TX 130-43 with narrow stabilizers	TX 130-45 with large stabilizers
Maximum lift capacity (at 500 mm from fork heel)	kg	4000	4300	4500
Maximum lift height	m	12.30	12.45	12.45
Lift capacity at maximum reach	kg	700	1700	1800
Lift capacity at maximum lift height	kg	2000/2600	3600	4000
Reach fully raised	m	1.20	0.50	0.00
Maximum forward reach	m	8.65	8.65	8.65
Height with max load	m	8.50/9.50	8.30	8.20
Breakout force	daN	7750	7750	7750
Operating weight	kg	10200	10400	10630



### DIMENSIONS (with MITAS 405/70x24)

	A	B	C	D	E	F	G	H	I	K	T	U	V	V1	V2	W
mm	1200	3120	1617	5850	1000	2050	402	2450	1100	1260	4396	2730	5204	980	3890	2445

# SPECIFICATIONS

## TX140-43 TX140-45

with narrow stabilizers

with wide stabilizers

### ENGINE

Make \_\_\_\_\_ TIER 3 - Turbo after cooled  
 Power \_\_\_\_\_ 88 kW/118 hp  
 Type \_\_\_\_\_ 4AA  
 Total displacement \_\_\_\_\_ 4.5 l  
 Maximum torque \_\_\_\_\_ 516 Nm @1400 rpm  
 EST (electronic service tool) \_\_\_\_\_ Compatible

### TRANSMISSION

Type \_\_\_\_\_ Powershift  
 Forward/Reverse speeds \_\_\_\_\_ 4/3  
 Maximum speed on road\*\* \_\_\_\_\_ 35 km/h  
 \*\* Max. speed limited according to the country's legislations

### HYDRAULIC SYSTEM

Type \_\_\_\_\_ Load Sensing  
 Hydraulic controls \_\_\_\_\_ Servo  
 Simultaneous movement \_\_\_\_\_ yes  
 Hydraulic pump \_\_\_\_\_ gear  
 Hydraulic flow \_\_\_\_\_ 115 l/min  
 Hydraulic pressure \_\_\_\_\_ 240 bar

### CAPACITIES

Fuel tank \_\_\_\_\_ 135 l  
 Hydraulic tank \_\_\_\_\_ 180 l

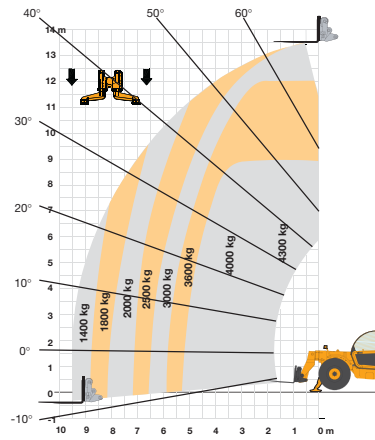
### TYRES

13.00 x 24 \_\_\_\_\_ GOOD-YEAR  
 15.5 x 25 \_\_\_\_\_ MICHELIN  
 405/70 x 24 \_\_\_\_\_ MITAS  
 400/80 x 24 \_\_\_\_\_ DUNLOP

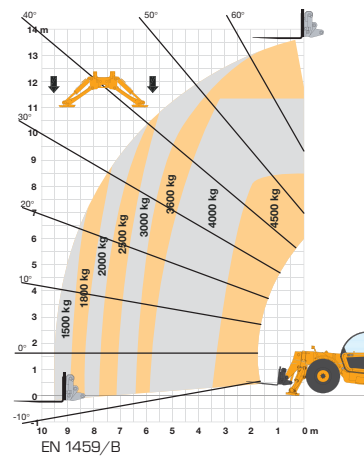
### NOISE

Internal \_\_\_\_\_ 77 LpA  
 External \_\_\_\_\_ 103 LpA

### TX140-43



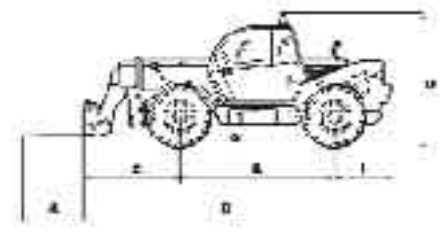
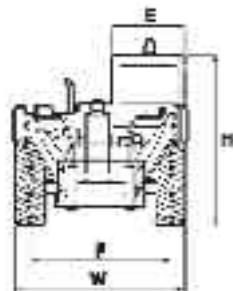
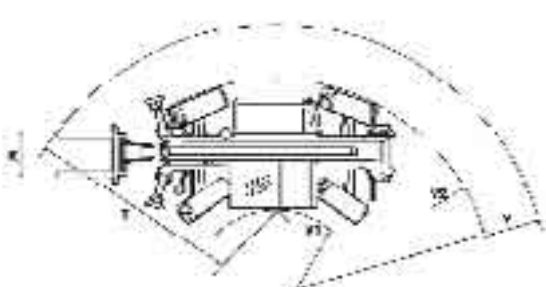
### TX140-45



### PERFORMANCE

		TX 140-43 with narrow stabilizers	TX 140-45 with wide stabilizers
Maximum lift capacity (at 500 mm from fork heel)	kg	4300/4000*	4500/4000*
Maximum lift height	m	13.65/13.30*	13.55/13.30*
Lift capacity at maximum reach	kg	1400/650*	1500/650*
Lift capacity at maximum lift height	kg	3000/1700*	3600/1700*
Reach fully raised	m	0.50/1.00*	0.30/1.00*
Maximum forward reach	m	9.33/9.33*	9.33/9.33*
Height with max load	m	8.90/7.30*	11.40/7.30*
Breakout force	daN	7750/7750*	7750/7750*
Operating weight	kg	11330	11460

\* Machine with stabilizers up



### DIMENSIONS (with MITAS 405/70x24)

mm

A	B	C	D	E	F	G	H	I	K	T	U	V	V1	V2	W
1200	3120	1902	6135	1000	2050	402	2450	1100	1260	4598	2730	5445	980	3890	2445



# SPECIFICATIONS

## TX170-45

### ENGINE

Make \_\_\_\_\_ TIER 3 - Turbo after cooled  
 Power \_\_\_\_\_ 88 kW / 118 hp  
 Type \_\_\_\_\_ 4AA  
 Total displacement \_\_\_\_\_ 4.5 l  
 Maximum torque \_\_\_\_\_ 516 Nm @1400 rpm  
 EST (electronic service tool) \_\_\_\_\_ Compatible

### TRANSMISSION

Type \_\_\_\_\_ Powershift  
 Forward/Reverse speeds \_\_\_\_\_ 4/3  
 Maximum speed on road\*\* \_\_\_\_\_ 35 km/h  
 \*\* Max. speed limited according to the country's legislations

### HYDRAULIC SYSTEM

Type \_\_\_\_\_ Load Sensing  
 Hydraulic controls \_\_\_\_\_ Servo  
 Simultaneous movement \_\_\_\_\_ yes  
 Hydraulic pump \_\_\_\_\_ gear  
 Hydraulic flow \_\_\_\_\_ 115 l/min  
 Hydraulic pressure \_\_\_\_\_ 240 bar

### CAPACITIES

Fuel tank \_\_\_\_\_ 135 l  
 Hydraulic tank \_\_\_\_\_ 180 l

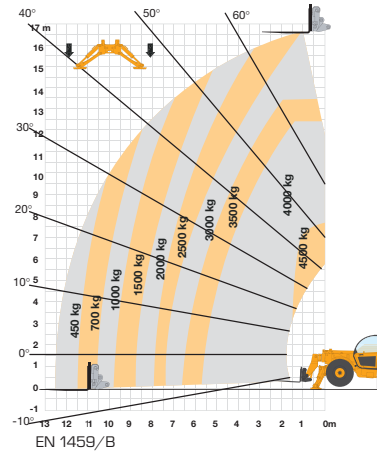
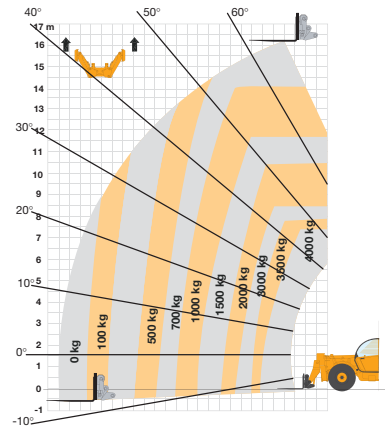
### TYRES

13.00 x 24 \_\_\_\_\_ GOOD-YEAR  
 15.5 X 25 \_\_\_\_\_ MICHELIN  
 405/70 x 24 \_\_\_\_\_ MITAS  
 400/80 x 24 \_\_\_\_\_ DUNLOP

### NOISE

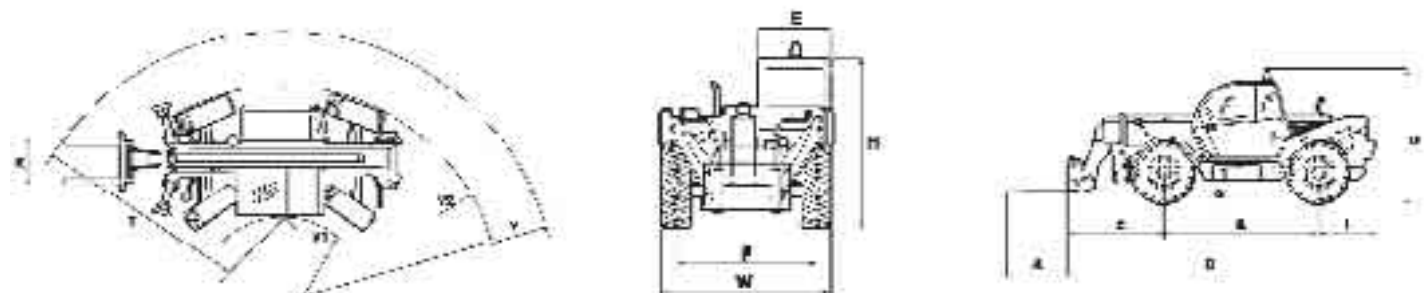
Internal \_\_\_\_\_ 77 LpA  
 External \_\_\_\_\_ 103 LpA

### TX170-45



### PERFORMANCE

		TX 170-45 with wide stabilizers up	TX 170-45 with wide stabilizers down
Maximum lift capacity (at 500 mm from fork heel)	kg	4000	4500
Maximum lift height	m	16.24	16.60
Lift capacity at maximum reach	kg	-	450
Lift capacity at maximum lift height	kg	700	3000
Reach fully raised	m	2.00	1.00
Maximum forward reach	m	12.54	12.54
Height with max load	m	7.40	7.95
Breakout force	daN	7750	7750
Operating weight	kg	12300	12300



### DIMENSIONS (with MITAS 405/70x24)

	A	B	C	D	E	F	G	H	I	K	T	U	V	V <sub>1</sub>	V <sub>2</sub>	W
mm	1200	3120	1902	6135	1000	2050	402	2450	1100	1260	4598	2730	5445	980	3890	2445



# TX130-30/TX130-33 TX130-40/TX130-43 TX130-45/TX140-43 TX140-45/TX170-45

## STANDARD EQUIPMENT & OPTIONS

### STANDARD EQUIPMENT

#### Design concept

- 80 hp (atmo tier 2), 95 hp (turbo tier 2) and 118 hp (turbo common rail tier 3) Case 4.5 l engine
- 4 Wheel Drive
- Powershift transmission
- 3 steering modes ( 2WD 4WD Crab)
- Flow sharing / Load sensing hydraulics
- No (TX130), narrow (TX130/140) or wide (TX140/170) stabilisers
- Front axle balance control
- Independent stabilisers controls
- 2 rear lateral counterweights
- Load movement indicator and safety device
- Single battery
- Front and rear fenders
- Raincup for engine filter
- Road light support
- Road lights
- Left and right mirrors
- Mechanical parking brake
- Plate holder

#### Boom

- Chain (TX130 - 30/33) or Cylinder (others) boom extension
- 3 piece (TX130 / 140) or 4 piece (TX170) boom
- Self levelling
- Single lever hydraulic pilot control

#### Cab comfort

- Cloth seat with seat belt
- Rounded windshield with wiper
- Split door opening at 180°
- Sun visor
- Heating and efficient defrosting
- Single lever joystick (extension, boom, bucket, transmission cutout, hydraulic circuit)

#### Safety

- ROPS/FOPS cab
- Load movement indicator
- Hazardous boom extension warning (TX130-30/33) or stopping (other TX's) device
- Sun roof protection grill

- Seat belt
- Safety decals
- Noise insulation meeting european standards
- Safety valves on lift - tilting - boom - stabilizers
- Backup alarm

### OPTIONS

Choice of tyres (construction or agricultural pattern)

Choice of tyre sizes

#### Boom

- Hydraulic connection for attachment
- Boom working lights
- Electric circuit side boom

#### Tools

- Choice of Case/CNH or competition carriers (mechanical or Hydraulic)
- Choice of fixed or sideshift carriage
- Choice of buckets (Std, 4x1) with blade or teeth
- Choice of forks (fixed or floating)

■ Fork extension

■ Hooks

■ Truss boom

■ Extendible crane jib

■ Concrete mixer

■ Basket material handling

■ Other

#### Cab

■ Air conditioning

■ Cloth deluxe suspension seat with seat belt

■ Rear wiper

■ Roof wiper

■ Steering wheel knob

■ External screen guard

■ 2 front working lights

■ 1 rear working light

■ Titable steering wheel

#### Other

■ Twin batteries

■ Cold start engine

■ Limited slip differential on front axle

■ Rotating beacon

■ Trailer hook

Standard and optional equipment shown can vary by country.

#### Worldwide Case Construction Equipment Contact Information

##### EUROPE/AFRICA/MIDDLE EAST:

Centre D'affaires EGB  
5, Avenue Georges Bataille - BP 40401  
60671 Le Plessis-Belleville - FRANCE

##### NORTH AMERICA/MEXICO:

700 State Street  
Racine, WI 53404 U.S.A.

##### LATIN AMERICA:

Av. General David Sarnoff 2237  
32210 - 900 Contagem - MG  
Belo Horizonte BRAZIL

##### ASIA PACIFIC:

Unit 1 - 1 Foundation Place - Prospect  
New South Wales - 2148 AUSTRALIA

##### CHINA:

No. 29, Industrial Premises, No. 376,  
De Bao Road, Waigaoqiao Ftz, Pudong,  
SHANGHAI, 200131, P.R.C.

**NOTE:** Standard and optional fittings can vary according to the demands and specific regulations of each country. The illustrations may include optional rather than standard fittings - consult your Case dealer. Furthermore, CNH reserves the right to modify machine specifications without incurring any obligation relating to such changes.

#### Case Construction Equipment

CNH UK Ltd.  
Armstrong House  
The Finningley Estate  
Hayfield Lane  
Doncaster  
DN9 3XA  
Fax +44 (0)1302 802126

[www.casece.com](http://www.casece.com)

**CASE**  
CONSTRUCTION



Conforms to directive 98/37/CE