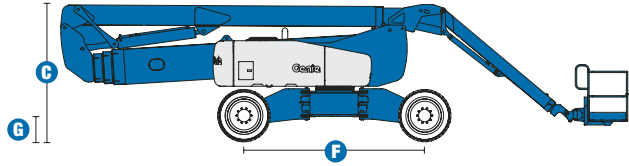
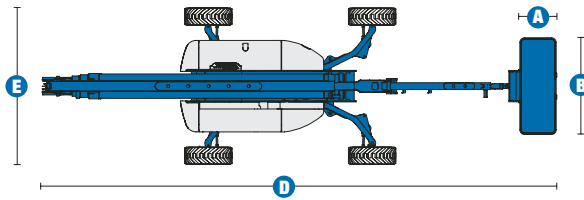


# Specifications



**MODEL** **Z™-135/70**

MEASUREMENTS	Metric	US
Working height max*	43.15 m	141 ft
Platform height max	41.15 m	135 ft
Horizontal reach max - riser extended	18.03 m	59 ft 2 in
Horizontal reach max - riser retracted	21.26 m	69 ft 9 in
Up and over clearance max -		
riser extended	23.01 m	75 ft 6 in
riser retracted	9.91 m	32 ft 6 in
Below ground reach	6.02 m	19 ft 3 in
<b>A</b> Platform length - 6 ft/8 ft model	76 cm / 91 cm	2 ft 6 in / 3 ft
<b>B</b> Platform width - 6 ft/8 ft model	1.83 m / 2.44 m	6 ft / 8 ft
<b>C</b> Height - stowed	3.07 m	10 ft 1 in
<b>D</b> Length - stowed	12.93 m	42 ft 5 in
<b>E</b> Width - axles extended	3.94 m	12 ft 11 in
Width - axles retracted	2.46 m	8 ft 1 in
<b>F</b> Wheelbase - axles extended	4.11 m	13 ft 6 in
Wheelbase - axles retracted	4.72 m	15 ft 6 in
<b>G</b> Ground clearance - centre	51 cm	1 ft 8 in

**PRODUCTIVITY**

Lift capacity	272 kg	600 lbs
Platform rotation	160°	
Turntable rotation	360° continuous	
Turntable tailswing - axles extended riser up	79 cm	2 ft 7 in
Turntable tailswing - riser down	4.27 m	14 ft
Drive speed - stowed	4.8 km/h	3.0 mph
Drive speed - raised	1.13 km/h	0.7 mph
Lift speed to full height	96 sec	
Gradeability**	45%	
Inside turning radius - axles extended	2.29 m	7 ft 6 in
Inside turning radius - axles retracted	5.51 m	18 ft 1 in
Outside turning radius - axles extended	5.64 m	18 ft 6 in
Outside turning radius - axles retracted	7.77 m	25 ft 6 in
Controls	12 V DC proportional	
Tyres	445/65 D22.5 18 ply foam-filled	

**POWER**

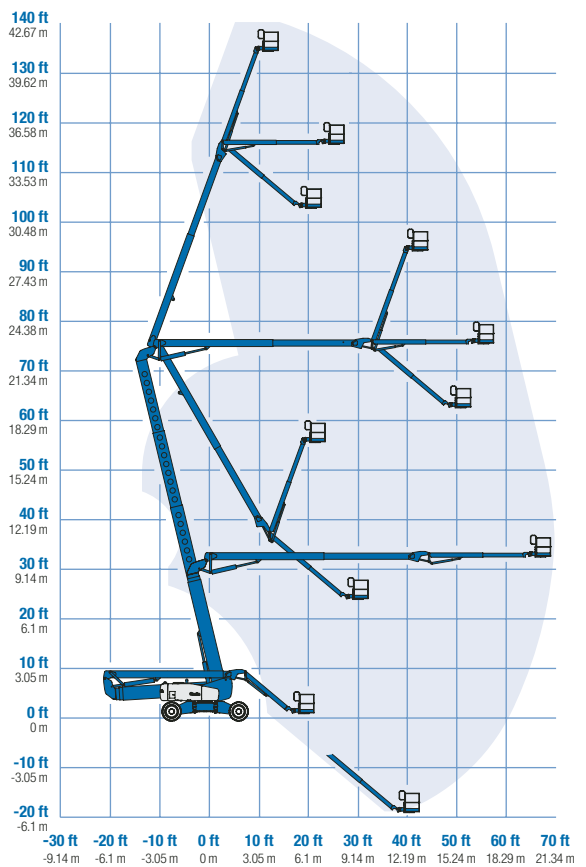
Power source	Deutz Diesel BF4L 2011 4-cylinder diesel, 79 hp (58.9 kW)	
Auxiliary power unit	12 V DC	
Hydraulic tank capacity	246.1 L	65 gal
Fuel tank capacity	151.4 L	40 gal

**WEIGHT\*\*\***

	20,366 kg	44,900 lbs
--	-----------	------------

**STANDARDS COMPLIANCE** CE EN280

**RANGE OF MOTION Z™-135/70**



\* The metric equivalent of working height adds 2 m to platform height. U.S. adds 6 ft to platform height.

\*\* Gradeability applies to driving on slopes. See operator's manual for details regarding slope ratings.

\*\*\* Weight will vary depending on options and/or country standards.

## Features

### EASILY CONFIGURED TO MEET YOUR NEEDS

#### PLATFORM OPTIONS

- Steel 2.44 m (8 ft) (standard)
- Steel 1.83 m (6 ft)
- Steel 1.83 or 2.44 m (6 or 8 ft) tri-entry platform

#### JIB

- 3.70 to 6.10 m (12 to 20 ft) JIB EXTEND™

#### POWER OPTIONS

- Deutz diesel 79 hp (58.9 kW)

#### DRIVE/STEER

- 4-wheel drive (standard)
- 4-wheel steer (standard)

#### TYRE

- Extra-wide rough terrain, foam-filled (standard)

### STANDARD FEATURES

#### MEASUREMENTS

- 43.15 m (141 ft) working height
- 21.26 m (69 ft 9 in) horizontal reach
- 23.01 m (75 ft 6 in) up and over clearance
- Up to 272 kg (600 lb) lift capacity

#### PRODUCTIVITY

- 3.70 to 6.10 m (12 to 20 ft) JIB EXTEND™
- Self-leveling platform
- Fully proportional Hall effect controls
- Drive enable
- AC power to platform
- Horn
- Hour meter
- Tilt alarm
- On-board full diagnostics and engine monitoring display
- ALC 1000 electronic control system
- 360° continuous turntable rotation
- X-Chassis™ extendable axles
- Four wheel high angle steer
- Four steering modes: front, rear, crab and coordinated
- Four wheel brakes
- Full-time positive traction 4WD
- Hydraulic oil cooler
- Adjustable foot switch timeout
- Two-speed wheel motors
- Full certified load sensor



### STANDARD FEATURES cont.

#### POWER

- All engines are emission compliant
- 12 V DC auxiliary power
- Engine protection package
- Deutz intake air heater
- Swing out engine tray

### OPTIONS & ACCESSORIES

#### PRODUCTIVITY

- Platform swing gate
- Half mesh platform inserts with swing gate
- Platform top auxiliary rail
- Air line to platform
- Hostile environment kit
- Deluxe hostile environment kit
- Tool tray
- Fluorescent tube caddy
- Pipe cradle (pair)
- Alarm package
- Platform work lights
- Front driving lights
- Lockable platform control box covers

#### POWER

- Engine gauge package
- 3000 watt generator (220 V/50 HZ)
- Cold start packages
- Diesel scrubber/spark arrestor
- Diesel spark arrestor muffler

### Distributed By:

### European Offices

#### UK

The Maltings  
Wharf Road  
Grantham NG31 6BH  
UK  
Tel: +44 (0)1476 584333  
Fax: +44 (0)1476 584334

#### France

10, ZA de la Croix St. Mathieu  
28320 Gallardon  
France  
Tel: +33 (0)2 37 26 09 99  
Fax: +33 (0)2 37 26 09 98

#### Germany

Finienweg 3  
28832 Achim/Bremen  
Germany  
Tel: +49 (0)4202 8852-0  
Fax: +49 (0)4202 8852-20

#### Spain

Gaià 31, Pol. Ind. Plà d'en Coll  
08110 Montcada i Reixac  
Barcelona  
Spain  
Tel: +34 93 572 50 90  
Fax: +34 93 572 50 91

#### Scandinavia

Tagenevägen 72  
425 37 Hisings Kärra  
Sweden  
Tel: +46 31 57 51 00  
Fax: +46 31 57 90 20

### Genie United States

18340 NE 76th Street  
P.O. Box 97030  
Redmond, Washington 98073-9730  
USA  
Tel: +1 425 881-1800  
Fax: +1 425 883-3475

**WEB:** [www.genieindustries.com](http://www.genieindustries.com)  
**Email:** [infoeurope@genieind.com](mailto:infoeurope@genieind.com)