

Twisco

■ SLT 420 B


The multi-purpose pocket telehandler !


- Capacity : 2000 kg
- Compact
- Manœuvrable
- Rough terrain




 **MANITOU**


Twisco SLT 420 B

 **Lifting capacity** (with forks carriage)2000 kg
(500 mm load centre)


 **Lifting height** (with forks carriage)4,02 m
Max. front reach.....2,26 m


 **Tyres**
Front and rear31 x13-16,5

 **Skid steer loader carriage**
In option : hydraulic line at boom head and back to tank
(250 bar/40 L/mn)

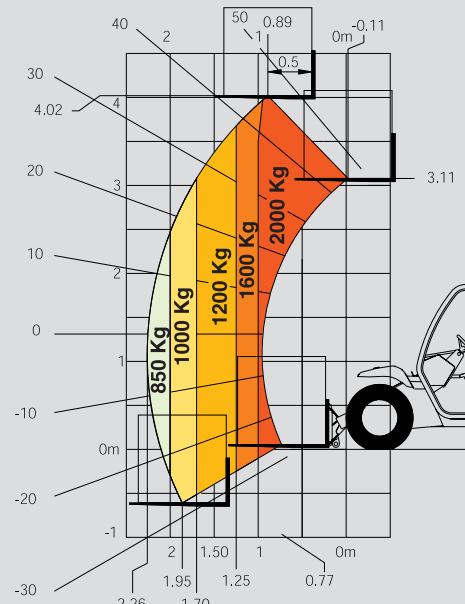
 **Perkins 404 C22 engine**
Capacity4 cyl. - 2216 cm3
Power(ISO/TR 14396) 50 HP/38 kw
Rated speed2800 r.p.m
Max. torque143 Nm at 1800 r.p.m
Coolingwater

 **Transmission**hydrostatic
3 wheel drive
Reversing shift on JSM joystick
Travel speed : 12 km/h
Parking brakeson front wheels

 **Hydraulic**
Main geared pump250 bar/40 L/mn

 **Weight** (with carriage and forks)3085 kg
Overall width1662 mm
Overall height1900 mm
Turning radius (rear wheel axle)2225 mm
Ground clearancel258 mm

This publication in no way constitutes an offer and the company reserves the right to alter specification without prior notice.
The MANITOU models presented in this brochure can be supplied complete with optional equipment attachments.



Rough terrain standard EN 1459 B

SKID STEER LOADER ATTACHMENTS ADAPTATION



CBC



4x1Bucket



CBG



Sweeper



Concrete mixer



**MANY
OTHER
ATTCHMENTS**

CALL US FOR MORE INFORMATION



JSM (Joystick Switch and Move)

