



JCB LOADALL | 528S

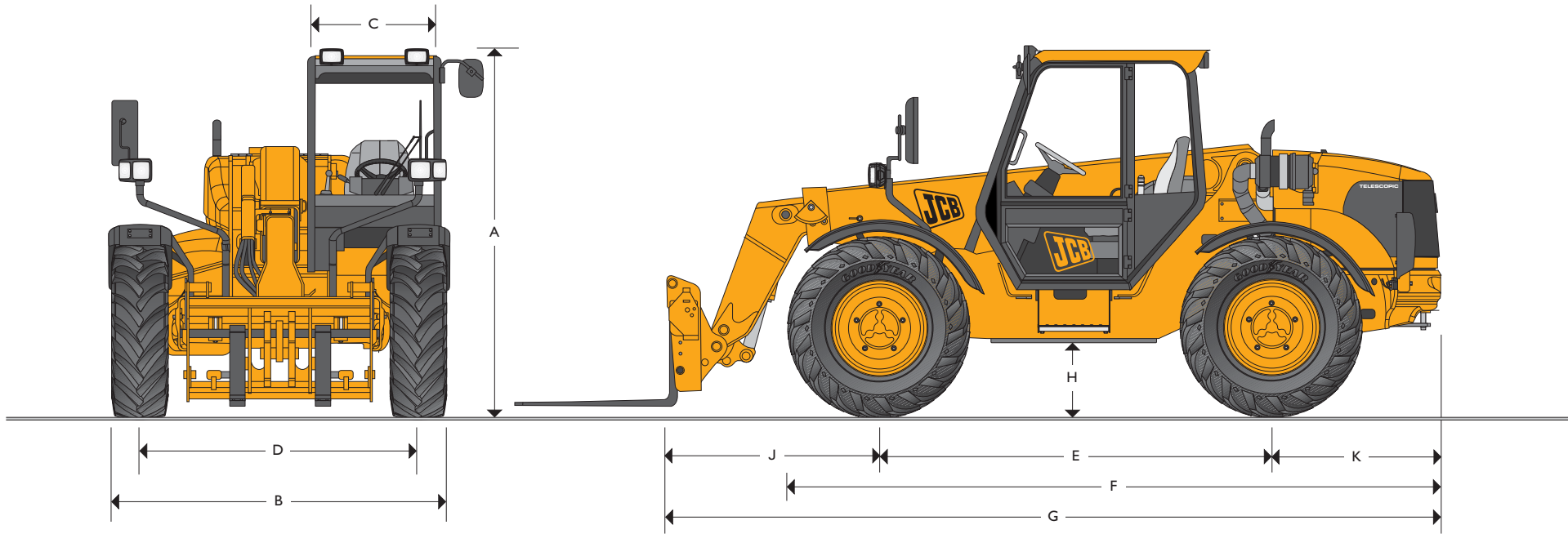


MAX. PAYLOAD:

2.8 tonnes (6170lb)

MAX. LIFT HEIGHT:

6.7 metres (22ft 2in)



STATIC DIMENSIONS

Machine model	528S
	m (ft-in)
A Overall height	2.47 (8-1)
B Overall width (over tyres)*	2.31 (7-7)
C Inside width of cab	0.88 (2-11)
D Front track	1.88 (6-2)
E Wheelbase	2.70 (8-10)
F Overall length to front tyres	4.48 (14-10)
G Overall length to front of Q-Fit carriage	5.40 (17-10)
H Ground clearance	0.45 (1-6)

Machine model	528S
	m (ft-in)
J Front wheel centre to carriage	1.17 (3-8)
K Rear wheel centre to rear face	1.53 (5-0)
Carriage roll back angle	degrees 42
Carriage dump angle	degrees 34
Outside turn radius (over tyres) 4WS	3.58 (11-9)
Weight	kg (lb) 6990 (15410)
Tyres	17.5 LR 24

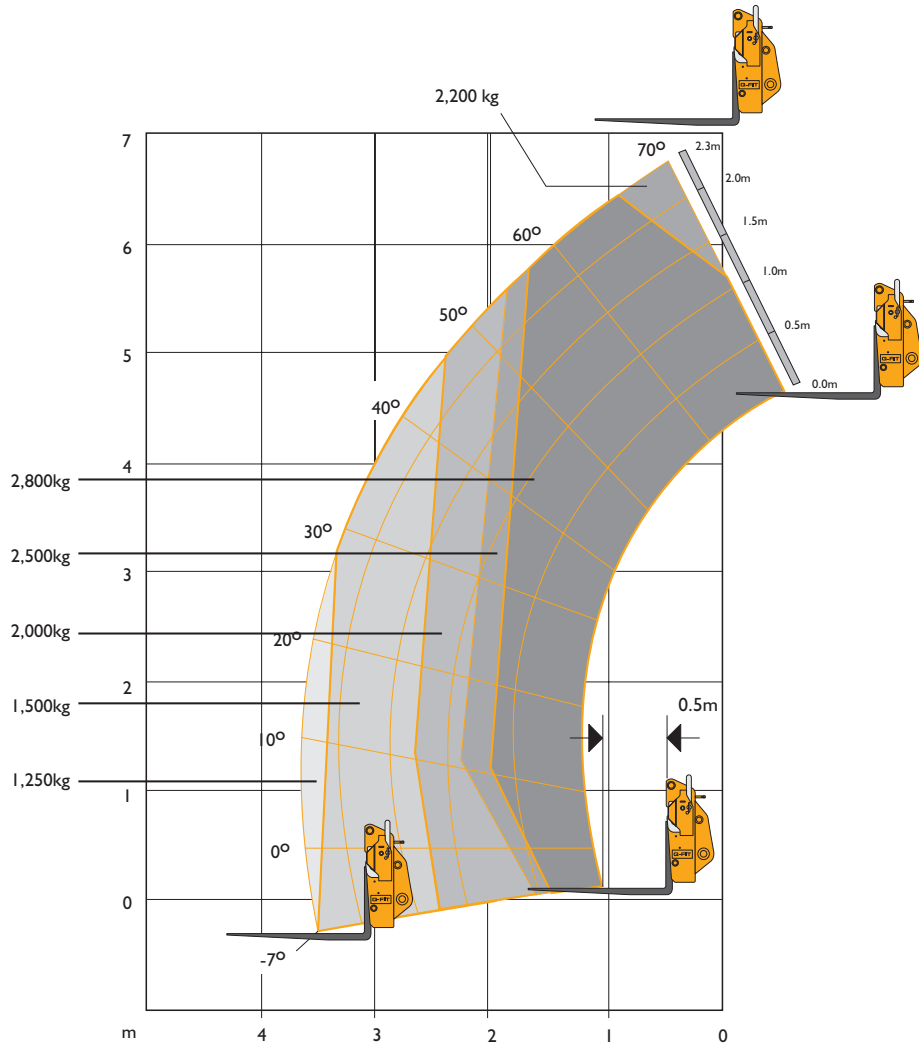
*Dependent upon tyre specified.



JCB LOADALL | 528S



LIFT PERFORMANCE



LIFT PERFORMANCE

Machine Model	528S	
Maximum lift capacity	kg (lb)	2800 (6170)
Lift capacity to full height	kg (lb)	2200 (4850)
Lift capacity at full reach	kg (lb)	1250 (2755)
Lift height	m (ft-in)	6.75 (22-2)
Reach at maximum lift height	m (ft-in)	0.48 (1-7)
Maximum forward reach	m (ft-in)	3.73 (12-3)
Reach with 1 tonne load	m (ft-in)	3.73 (12-3)
Placing height	m (ft-in)	6.06 (19-10½)

Complies with stability test EN 1459 Annex B.



JCB LOADALL | 528S



ENGINE

Latest technology and advanced design provides low fuel consumption, reduced noise, high torque and power output, total reliability and minimal maintenance.

Two-stage, dry type air filter with primary and safety elements.

Manufacturer		JCB
Model		JCB444
Displacement	ltr (in ³)	4.4 (269)
No. of cylinders		4
Bore size	mm (in)	103 (4.13)
Stroke	mm (in)	132 (5)
Aspiration		Turbo
Power rating		
Power @ 2200rpm	kW (HP)	74.2 (100)
Torque rating		
Torque @ 1300rpm	Nm (lb ft)	425 (313.5)

TRANSMISSION

JCB Syncro Shuttle transmission incorporating torque converter, reversing shuttle and all synchromesh 4-speed gearbox in one resiliently mounted unit. Electro-hydraulic direction control through a steering column mounted switch for modulated forward/reverse shuttling.

Steering column mounted switch incorporating directional control.

Gear lever and loader control transmission disconnect switches for fast gearchanging.

Travel speed 30kph (18.6 mph)

Front and rear drive axles: Epicyclic hub reduction type with drop box on front axle. Permanent 4-wheel drive.

BRAKES

Service brakes: Hydraulically operated self-adjusting, oil-immersed multi-disc type on front axle.

Parking brake: Hand operated disc brake on output of gearbox.

BOOM AND CARRIAGE

Boom is manufactured from high tensile steel.

Low maintenance, hard wearing pads.

JCB Q-fit self levelling carriage with pin locking accepts pallet forks and a wide range of attachments.

One boom end auxiliary hydraulic service fitted as standard.

SAFETY CHECK VALVES

Fitted to carriage tilt, telescopic and boom lift rams.

HYDRAULICS

Single gear pump, fitted with suction strainer and filter.

Operating system pressure	bar (psi)	241 (3500)
Flow at system pressure @ 2200rpm	ltr/min (gal/min)	80 (17.6)
Hydraulic Cycle Times		Seconds
Boom raise		8.4
Boom lower		6.0
Extend		6.9
Retract		6.6
Bucket dump		2.6
Bucket crowd		3.6

ELECTRICS

12V negative earth. I45AH heavy duty battery with isolator. Full road lights and direction indicators. Reversing light and reverse alarm. Hazard warning.

CAB

Quiet safe and comfortable cab conforms to ROPS ISO 3471 and FOPS ISO 3449. Toughened glass all round with laminated roof screen. Roof bars, front, rear and roof screen wash/wipe. Rear opening window. Heater/screen demister.

Audio-visual warning system for coolant temperature, engine oil pressure, air cleaner, battery charge, transmission oil temperature and pressure. Water in fuel, low water level. Hour meter and road speed indicator. Inclinator. Adjustable suspension seat. Tilt steering column.

Controls: Multi-lever direct acting hydraulic control levers with joystick control of lift and crowd. Throttle and brake pedals.

Optional: Single lever joystick.

Load moment indicator: Automatic eye level audio-visual load moment indicator warning system receiving a signal from a load sensor on the rear axle.

This system continuously monitors the machine's forward stability and leaves the operator in control at all times.

STEERING

Hydrostatic power steering with power track rods on both axles.

Three steer mode options: Front wheel steer, crab steer, all wheel steer operated from in the cab by a selection lever.

OPTIONS AND ACCESSORIES

Options: 4 speed Powershift transmission, limited slip differential front axles, working lights, rotating flashing beacon, fire extinguisher, front screen guard, air conditioning, mechanical or hydraulic tow hitch for maximum gross weight of 8 tonnes (2 tonnes download on hitch), complete with trailer light socket and trailer tip hydraulics, progressive trailer brakes, hydraulic pin locking for attachments, 2 boom end auxiliary services. High flow boom auxiliary. Sunblind, arm rest.

Attachments: Q-fit style carriage. Contact your local dealer for details of the comprehensive range.



A GLOBAL COMMITMENT TO QUALITY

JCB's total commitment to its products and customers has helped it grow from a one-man business into Britain's largest privately owned manufacturer of backhoe loaders, crawler excavators, wheeled excavators, telescopic handlers, wheeled loaders, dump trucks, rough terrain fork lifts, industrial fork lifts, mini/midi excavators, skid steer loaders and tractors.

By making constant and massive investments in the latest production technology, the JCB factories have become some of the most advanced in Europe.

By leading the field in innovative research and design, extensive testing and stringent quality control, JCB machines have become renowned all over the world for performance, value and reliability.

And with a global sales and service network of over 400 distributors and agents, the company exports over 70% of its production to all five continents.

Through setting the standards by which others are judged, JCB has become one of Britain's most impressive success stories.

