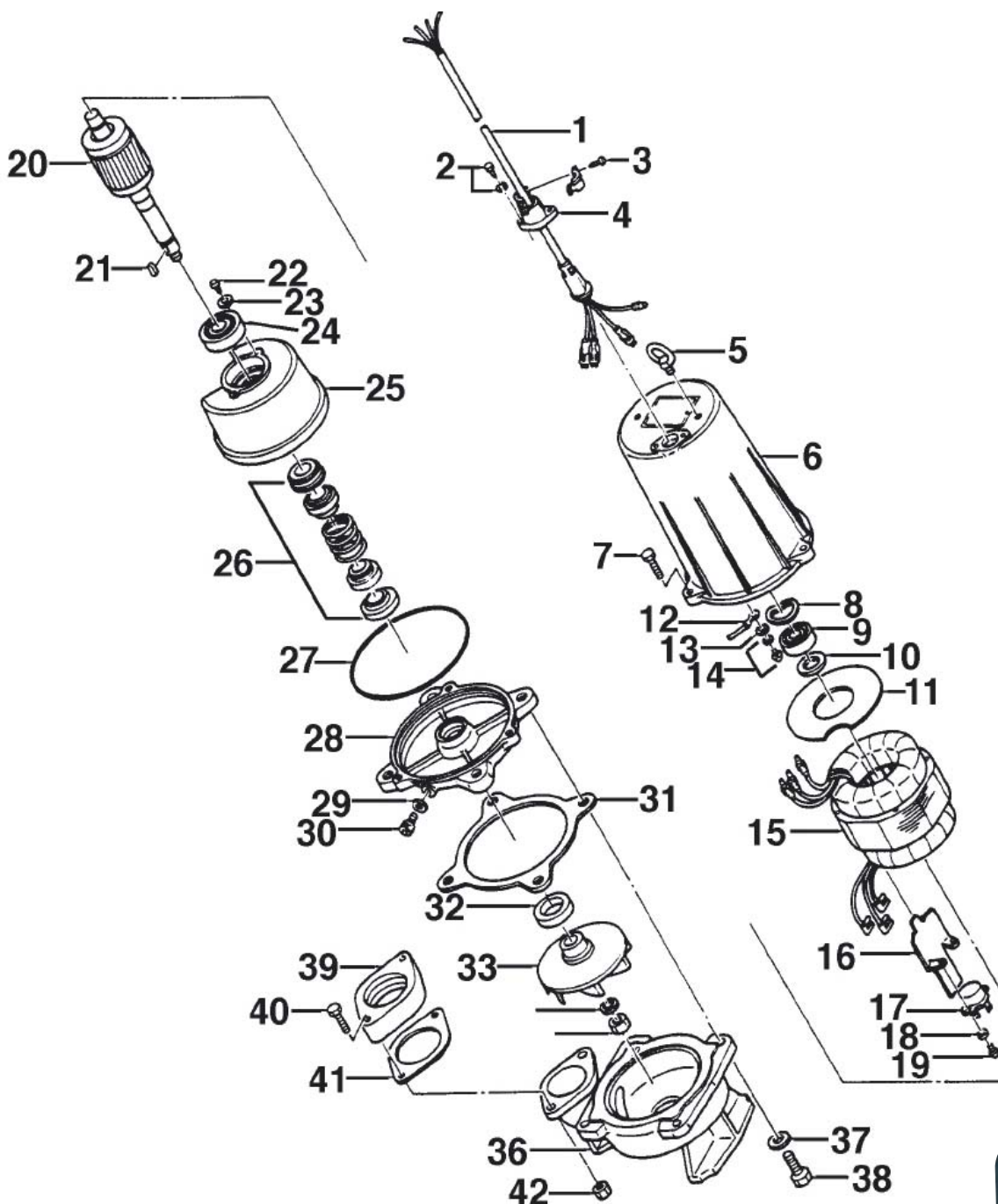


>> Reservedelsliste U2 50U2.75-53



>> Se listen på bagsiden!

STARING

Staring Maskinfabrik A/S
Starengvej 9-11
DK-9700 Brønderslev

Tlf.: +45 9882 1622
Fax: +45 9882 5591
www.staring.dk
staring@staring.dk

CVR.nr. DK 2767 2701



>> Reservedelsliste U2 50U2.75-53

ITEM	CODE No.	DESCRIPTION	Q'TY	SIZE	MATERIAL	REMARKS
1	001-482-16	Cabtyre Cable Set	10m	H07RN4Cx1,5mm ² (CEE)	LBT(HAR)	
2	140-427-17	Hex. Bolt	2	M5x15	SUS304	
3	143-071-24	Cross-Recessed Pan Tapping Screw	2	M4x12	SUS304	
4	003-100-13	Gland	1		SUS304	
5	072-105-12	Eyebolt	2	M8	SS	
6	064-000-64	Motor Frame	1		FC	
7	140-056-11	Hex. Bolt	3	M8x30	SUS304	
8	142-194-18	Wave Washer	1	6203	SK-5	
9	052-102-17	Bearing (old)	1	6203ZZC3		
9	052-186-15	Bearing (new)	1	AC-6203ZZC3		
10	061-152-10	Bearing Collar	1	ø17,1xø23x1,6l	SPC	
11	058-115-11	Lead Wire Protection Bush	1	ø52xø115x1l	Resin	
12	009-112-16	Earth Terminal	1Set	1,25mm ²		
13	142-124-20	Plain Washer	1	M4	SPC	
14	143-086-22	Cross-Recessed Pan Screw	1	M4x8	SWRM	
15	056-003-31	Stator	1Set			380V/400V/415V
16	127-143-15	Protector Fixing Plate (old)	1	8-BE2	SPC	
16	127-226-13	Protector Fixing Plate (new)	1	8-BE2	SPC	
17	053-465-14	Motor Protector	1	KA311-DBXL55	(T)	380V/400V/415V
18	142-124-20	Plain Washer	2	M4	SPC	
19	143-016-18	Cross-Recessed Pan Screw	2	M4x12	SWRM	
20	055-001-17	Rotor & Shaft	1Set			
21	147-016-10	Impeller Key	1	4x4x10l	SUS	
22	143-028-13	Cross-Recessed Pan Screw	2	M5x10	SWRM	
23	062-187-17	Bearing Fixing Washer	2	ø5,5xø18x2,3t	SPC	
24	052-106-11	Bearing	1	6303ZZC3		
25	060-230-10	Bearing Housing	1			
26	025-290-19	Mechanical Seal	1	W-14HL	SIC+CCBN	Oil (ISO VG32 390ml)
27	122-072-17	O-Ring	1	P-140	NBR	*
28	029-238-11	Oil Casing	1	U2-8T	FC	
29	121-248-13	Packing	1	ø8,2xø13,5x2t	PE-Sheet	*
30	035-112-17	Oil Plug	1	M8x12	SUS304	
31	121-339-12	Packing	1	ø124xø144x3t	NBR	*
32	026-178-13	Oil Seal	1	SC-22357	NBR	
33	021-C50-15	Impeller	1	50Hz	FC	
33	021-C51-16	Impeller	1	60Hz	FC	
34	142-164-19	Spring Washer	1	M10	SUS304	
35	141-006-77	Hex. Nut	1	M10	S45C	
36	020-781-17	Pump Casing	1	50Hz	FC	
36	020-001-31	Pump Casing	1	60Hz	FC	
37	142-127-10	Plain Washer	4	M8	SUS304	
38	140-057-12	Hex. Bolt	4	M8x35	SUS304	
39	048-131-12	Screwed Flange	1	50mm (P.C. 84)	FC	
40	140-058-13	Hex. Bolt	2	M8x40	SUS304	
41	121-138-19	Packing	1	LB (P.C. 84)	NBR	*
42	141-005-18	Hex. Nut	2	M8	SUS304	
*	173-457-18	Packing & O-Ring Assy	1			