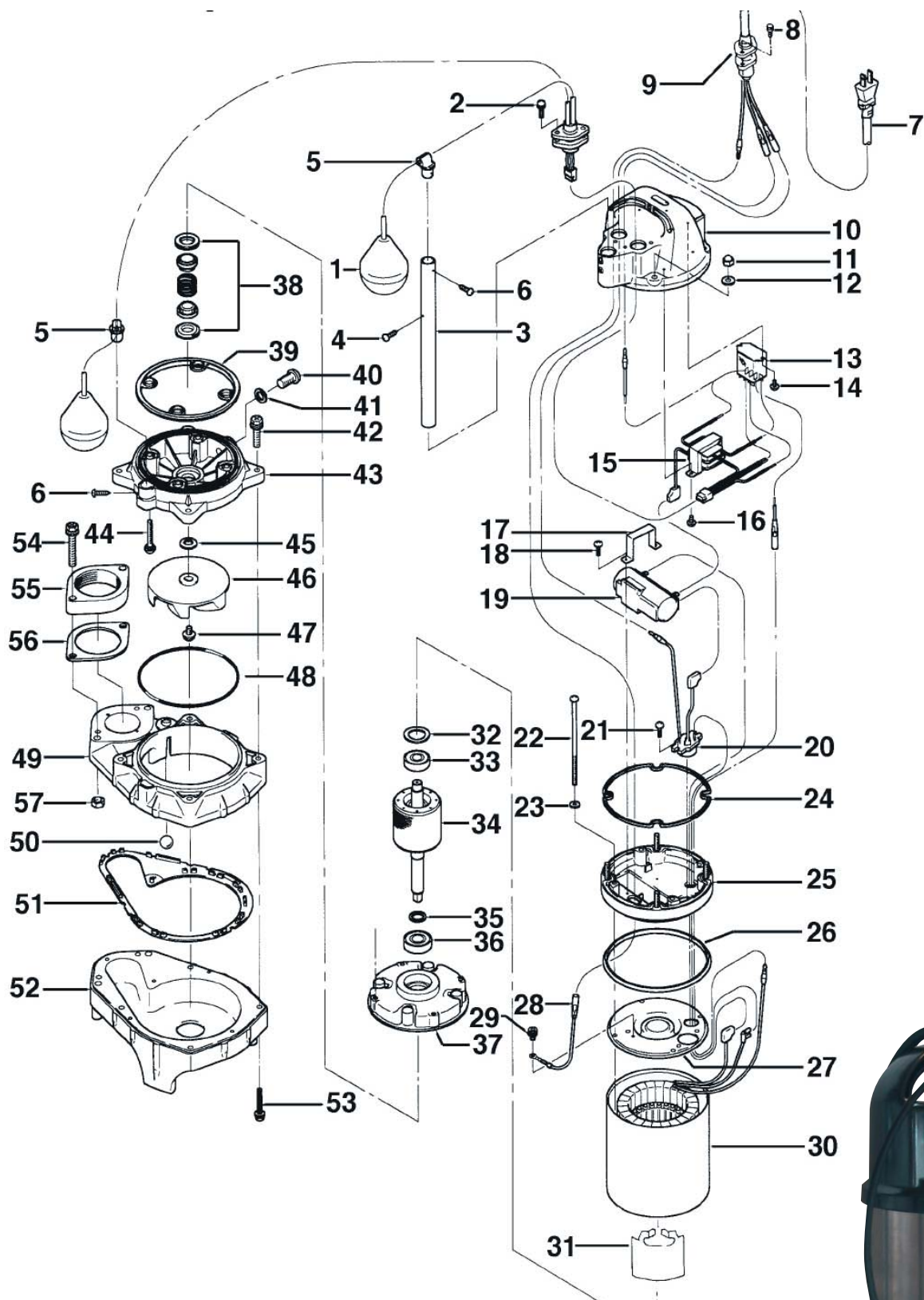


>> Reservedelsliste PUA 40PUA2.25S



STARING

Staring Maskinfabrik A/S
Starengvej 9-11
DK-9700 Brønderslev

Tlf.: +45 9882 1622
Fax: +45 9882 5591
www.staring.dk
staring@staring.dk

CVR.nr. DK 2767 2701



>> Reservedelsliste PUA 40PUA2.25S

ITEM	CODE No.	DESCRIPTION	Q'TY	SIZE	MATERIAL	REMARKS
1	106-482-14	Float Set	1set	MAO-2		
2	143-146-18	Cross-Recessed Pan Tapping Screw	2	M5x20	SUS304	
3	109-131-27	Float Support Pipe	1	ø14x250l	PVC	
4	143-143-15	Cross-Recessed Truss Tapping Screw	1	M4x16(D=8)	SUS304	
5	109-129-19	Float Support Bush	2	ø14	Rubber	
6	143-143-15	Cross-Recessed Truss Tapping Screw	2	M4x16(D=8)	SUS304	
7	001-453-18	Cabtyre Cable	10m	HO7RN3Cx1mm²(CEE-W/	HAR	
8	143-146-18	Cross-Recessed Pan Tapping Screw	2	M5x20	SUS304	
9	003-100-13	Gland	1		SUS304	
10	051-223-12	Head Cover	1		Resin	
11	141-029-18	Hex. Cap Nul	4	M6	SUS304	
12	142-126-19	Plain Washer	4	M6	SUS304	
13	114-102-12	Power Relay	1	LY-2F (AC24V)		
14	143-152-17	Cross-Recessed Truss Tapping Screw	2	M3x8	SWCH	
15	115-119-15	Transformer	1	S230/24		
16	143-153-18	Cross-Recessed Truss Tapping Screw	2	M3.5x8	SWCH	
17	127-200-11	Capacitor Fixing Plate	1	VANCS	SECC	
18	143-153-18	Cross-Recessed Truss Tapping Screw	2	M3.5x8	SWCH	
19	076-137-15	Capacitor	1	SH-JPX, 12MFD-450VAC		
20	053-450-16	Motor Protector	1	KA142-LPVL01	(T)	
21	143-138-17	Cross-Recessed Truss Tapping Screw	2	M4x12	SWRM	
22	143-148-10	Cross-Recessed Pan Screw	4	M5x145 (20l)	SWRM	
23	142-112-25	Plain Washer	4	M5	SPC	
24	121-472-18	Packing	1	P.C. 125xø130x2,3t	NR	*
25	082-102-10	Head Cover Spacer	1		Resin	
26	121-471-17	Packing	1	ø126,6xø135,6x6t	NR	*
27	050-411-16	Motor Bracket	1		SPC	
28	009-187-12	Intermediate Lead Wire	1set	AWG16x150l		
29	143-085-34	Cross-Recessed Pan Screw	1	M4x6	BSBM	
30	056-745-10	Stator and Frame	1set			
31	071-325-17	Collar	1	54l	SECC	
32	142-192-16	Wave Washer	1	6201	SK-5	
33	052-100-15	Bearing	1	6201ZZC3		
34	055-689-12	Rotor and Shaft	1set			
35	061-170-14	Bearing Collar	1	ø35,1xø46x2t	SPCC	
36	052-101-16	Bearing	1	6202ZZC3		
37	060-400-13	Bearing Housing	1		ADC	
38	025-290-19	Mechanical Seal	1	W-14HL	SIC+CCBN	Oil (ISO VG32 250ml)
39	121-464-17	Packing	1	VANCS	NBR	*
40	035-127-15	Oil Plug	1	M10x15	SUS304	
41	121-246-11	Packing	1	ø10,3xø16x2t	PE-Sheet	*
42	140-435-18	Cross-Recessed Hex. Bolt	4	M6x30	SUS304	
43	029-300-15	Oil Casing	1	VANCS	Resin	
44	143-139-18	Cross-Recessed Truss Screw	4	M6x40	SUS304	
45	142-354-18	Conical Spring Washer	1	ø11,2xø22,5x0,8t	SUS304	
45	021-G26-29	Impeller	1	50Hz	Resin	
46	021-G27-20	Impeller	1	60Hz	Resin	
47	143-140-12	Cross-Recessed Truss Screw	1	M6x12	SUS304	
48	122-452-15	O-Ring	1	130xø2,8	NBR	*
49	020-908-12	Casing Upper Half	1	PU/PN/PSH	Resin	
50	203-065-11	Valve	1	ø17	Glass	
51	121-465-18	Packing	1	VANCS	NBR	*
52	020-921-11	Casing Lower Half	1	PU	Resin	
53	143-147-19	Cross-Recessed Pan Screw	6	M6x40	SUS304	
54	140-436-19	Cross-Recessed Hex. Bolt	2	M8x55	SUS304	
55	048-102-27	Screwed Flange	1	40mm (P.C. 90)	Resin	
56	121-468-11	Packing	1	P.C. 90xø45x2t	NR	*
57	141-121-11	Hex. Nul	2	M8 (B=12)	SUS304	
	173-500-17	Packing O-Ring Set	1set	(*)		