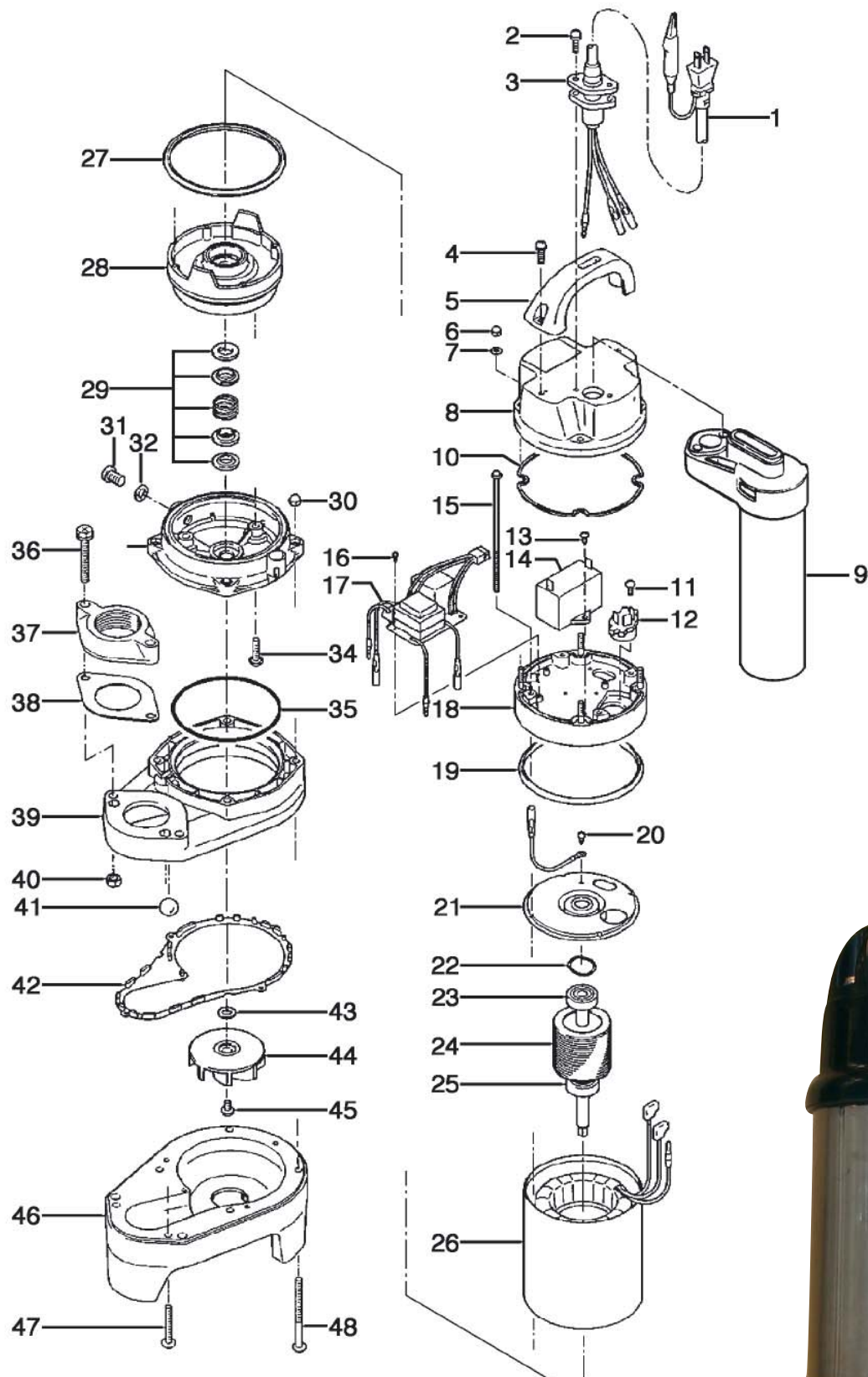


## >> Reservedelsliste POMA



**STARING**

Staring Maskinfabrik A/S  
Starengvej 9-11  
DK-9700 Brønderslev

Tlf.: +45 9882 1622  
Fax: +45 9882 5591  
www.staring.dk  
staring@staring.dk

CVR.nr. DK 2767 2701



## >> Reservedelsliste POMA

ITEM	CODE No.	DESCRIPTION	Q'TY	SIZE	MATERIAL	WEIGHT kg	REMARKS
1	001-350-14	Cabtyre Cable Set	1	H07RN-F 10m			
2	143-146-18	Tapping Screw (w/Plain Washer)	2	M5x20	SUS304	0.001	
3	003-100-13	Gland	1		SUS304	0.01	
4	143-096-12	Tapping Screw (w/Plain Washer)	2	M5x20	SUS304	0.001	
5	068-000-19	Handle	1	2-PU	Resin		
6	141-028-17	Hex. Cap Nut	4	M5	SUS304	0.002	
7	142-286-18	Plain Washer	4	d5.3xd12x11	SUS304	0.001	
8	051-000-14	Motor Head Cover	1		Resin	0.49	
9	106-000-06	Float Set	1set	POMA	JUS		
10	121-532-17	Packing	1	2-PU	NBR	0.001	
11	143-138-17	Tapping Truss Screw	2	M4x12	SWRM	0.001	
12		Motor Protector					
13	143-138-17	Tapping Truss Screw	1	M4x12	SWRM	0.001	
14	076-000-24	Capacitor	1				
15	143-176-17	Pan Screw (w/Plain Washer)	4	M4x140	SWRM		
16	143-177-18	Pan Tapping Screw	3	M3x10	SWRM		
17		Relay Unit	1set				
18	082-104-12	Head Cover Spacer	1		Resin		
19	121-531-16	Packing	1	d111.2xd120.2x6l	NBR	0.001	
20	143-085-18	Pan Screw (w/Plain Washer)	1	M4x6	SWRM		
21	050-000-34	Motor Bracket	1		SECD		
22	142-394-10	Wave Washer	1	#6200	SK-5		
23	052-135-19	Bearing	1	6200ZZC3		0.35	
24	055-757-12	Rotor	1set	w/Bearing		1	
25	052-100-15	Bearing	1	6201ZZC3		0.04	
26		Stator	1set				
27	121-529-11	Packing	1	2-PU	NBR	0.001	
28	060-422-11	Bearing Housing	1		ADC		
29	025-207-22	Mechanical Seal	1	D-12B	SiC	0.035	Oil ISO VG32 (150ml)
30	141-029-18	Hex. Cap Nut	4	M6	SUS304	0.001	
31	035-127-15	Oil Plug	1	M10x15	SUS304	0.01	
32	121-246-11	Packing	1	d10.3xd16x2l	PE	0.001	
33	029-000-42	Oil Casing	1	2-PU	Resin		
34	143-172-13	Truss Screw (w/Polyethylene Washer)	3	M6x25	SUS304		
35	122-131-15	O-Ring	1	G-100	NBR	0.001	
36	140-436-19	Hex. Bolt (w/Plain Washer)	2	M8x55	SUS304	0.024	
37	048-000-07	Screwed Flange	1	50mm(P.C.90)PT	Resin	0.07	
38	121-469-12	Packing(50mm)	1	P.C.90xd58x2l	NR	0.001	
39	020-001-34	Pump Casing (Upper)	1	2-PU	Resin	0.24	
40	141-121-11	Hex.Nut	2	M8(B=12)	SUS304	0.001	
41	203-065-11	Valve	1	d17	Glass		
42	121-530-15	Packing	1	2-PU	NBR	0.001	
43	040-139-16	Impeller Washer	1	d9.2xd17x2l	SUS304		
44	021-G42-18	Impeller (50Hz)	1	50Hz	Resin	0.035	
44	021-G43-19	Impeller (60Hz)	1	60Hz	Resin	0.025	
45	143-173-14	Truss Screw (w/Plain Washer)	1	M5x10	SUS304	0.001	
46	020-A03-18	Pump Casing (Lower)	1	2-PU	Resin	0.315	
47	143-147-19	Pan Screw (w/Plain Washer)	2	M6x40	SUS304	0.01	
48	143-141-13	Pan Screw (w/Plain Washer)	4	M6x80	SUS304	0.016	
		<Packing O-Ring Set>		50mm			
	173-008-78	Packing O-Ring Set	1set	(*)			