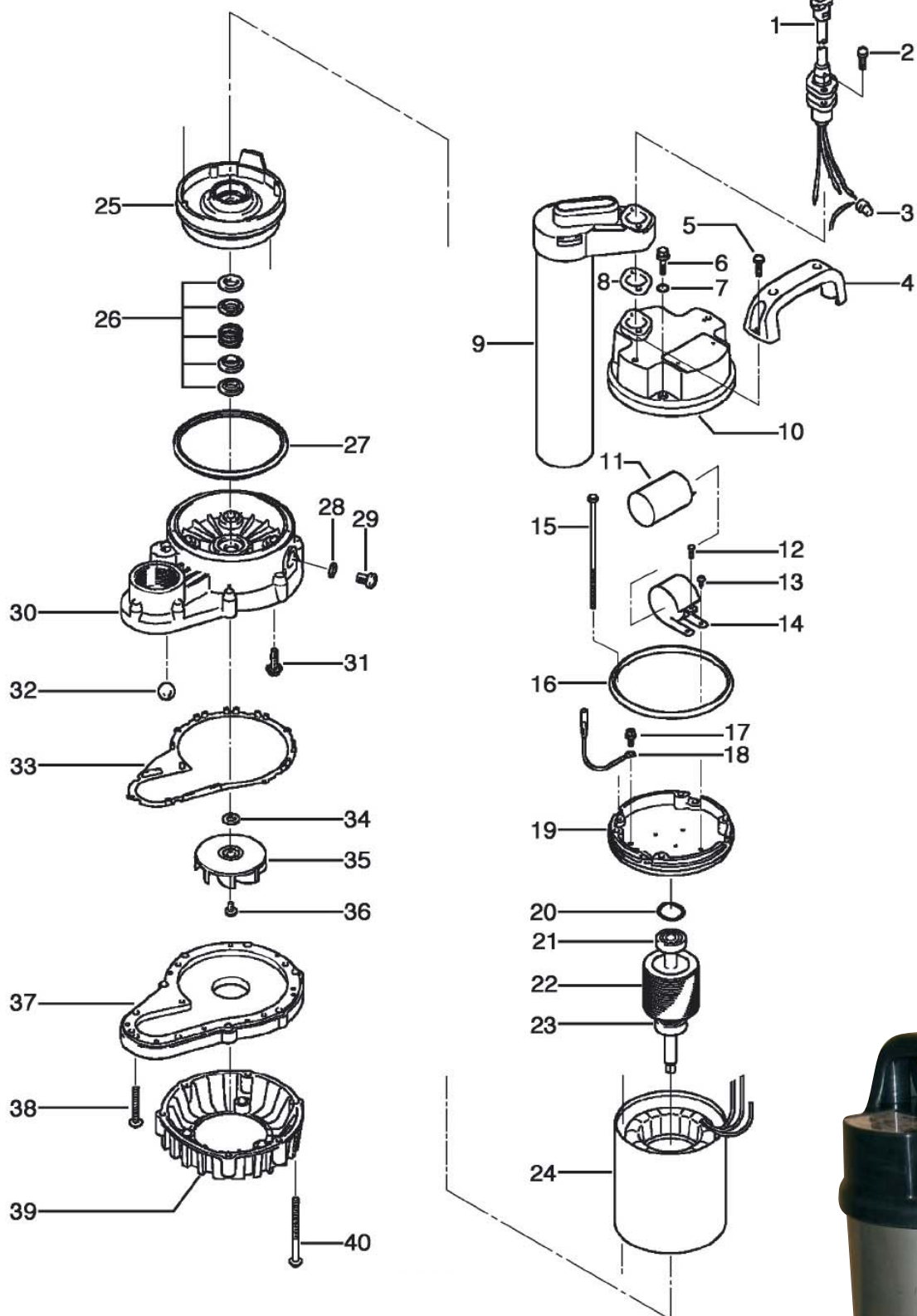


>> Reservedelsliste OMA 2



STARING

Staring Maskinfabrik A/S
Starengvej 9-11
DK-9700 Brønderslev

Tlf.: +45 9882 1622
Fax: +45 9882 5591
www.staring.dk
staring@staring.dk

CVR.nr. DK 2767 2701



>> Reservedelsliste OMA2

ITEM	CODE No.	DESCRIPTION	Q'TY	SIZE	MATERIAL	WEIGHT kg	REMARKS
1	001-003-91	Cabtyre Cable Set (10m)110V-50Hz(EU)	1	H07RN3Cx1mm2	TF-11		
1	001-350-14	Cabtyre Cable Set (3m)220/230/240V-50	1	H07RN3Cx1mm2(CEE-W/P)	F-11		
2	143-000-20	Tapping Screw (w/Plain Washer)	2	M5x38	SUS304		
3	009-120-17	Terminal	3	1-SD	CU	0.001	
4	068-000-19	Handle	1		Resin		
5	143-146-18	Tapping Screw (w/Plain Washer)	2	M5x20	SUS304	0.001	
6	140-000-34	Hex Bolt (w/Spring/Plain Washer)	4	M5x25(14L)	SUS304		
7	122-003-17	O-Ring	4	P-5	NBR		*
8	121-239-11	Packing	1	FAMILY-10A(P.C.28)	Slicon	0.001	*
9	106-000-05	Float Set	1set	OMUA-2	Resin	0.225	
10	051-000-14	Motor Head Cover	1		Resin		
11	076-000-24	Capacitor 110V-50Hz(EUR)	1	28MFD-220VAC			
11	076-000-24	Capacitor 220/230/240V-50Hz(EUR)	1	28MFD-220VAC			
12	143-000-22	Tapping Screw	1	M3x10	SWCH		
13	143-086-22	Pan Screw (w/Spring Washer)	2	M4x8	SWRM	0.001	
14	127-000-23	Capacitor Fixing Plate	1		SPCC		
15	143-000-21	Pan Screw	4	M4x115(30L)	SS		
16	121-000-63	Packing	1	d110.5xd115.5x4.5t	NBR		*
17	140-452-11	Hex Bolt (w/Spring/Plain Washer)	1	M4x8	BSBM		
18	009-000-46	Earth Terminal	1Set	1.25mm2x175L			
19	050-000-34	Motor Bracket	1		ADC		
20	142-388-11	Wave Washer	2	#6201(D=30.6)	S65CM		
21	052-100-15	Bearing	1	6201ZZC3		0.04	
22	055-000-94	Rotor	1Set	w/Bearing			
23	052-100-15	Bearing	1	6201ZZC3		0.04	
24	056-002-19	Stator 110V-50Hz(EUR)	1Set	w/M. Frame			
24	056-002-21	Stator 220/230/240V-50Hz(EUR)	1Set	w/M. Frame			
25	060-000-65	Bearing Housing	1		ADC		
26	025-207-22	Mechanical Seal	1	D-12B	SiC	0.035	WHITE OIL 165ml
27	121-000-47	Packing	1	40PU2.15-52/62	NBR		*
28	121-246-11	Packing	1	d10.3xd16x2t	PE	0.001	*
29	035-127-15	Oil Plug	1	M10x15	SUS304	0.01	
30	020-001-22	Pump Casing (Upper)	1	OM(A)2	Resin		
31	143-000-03	Truss Screw (w/O-Ring)	4	M6x20(P-5,NBR)	SUS304		
32	203-065-11	Valve	1	d17	Glass		
33	121-000-48	Packing	1	OM(A)2	NBR		*
34	142-390-16	Conical Spring Washer	1	d9.2xd18x0.7t	SUS304		
35	021-004-71	Impeller (50Hz)	1	OM(A)2	Resin		
35	021-004-72	Impeller (60Hz)	1	OM(A)2	Resin		
36	143-173-14	Truss Screw (w/Plain Washer)	1	M5x10	SUS304	0.001	
37	020-001-23	Pump Casing (Upper)	1	OM(A)2	Resin		
38	143-000-15	Tapping Screw (w/Plain Washer)	3	M5x30	SUS304		
39	023-000-42	Strainer Stand	1	OM2	Resin		
40	143-000-18	Tapping Screw (w/Plain Washer)	6	M5x50	SUS304		
		<Packing O-Ring Set>					
	173-001-00	Packing O-Ring Set	1set (*)				