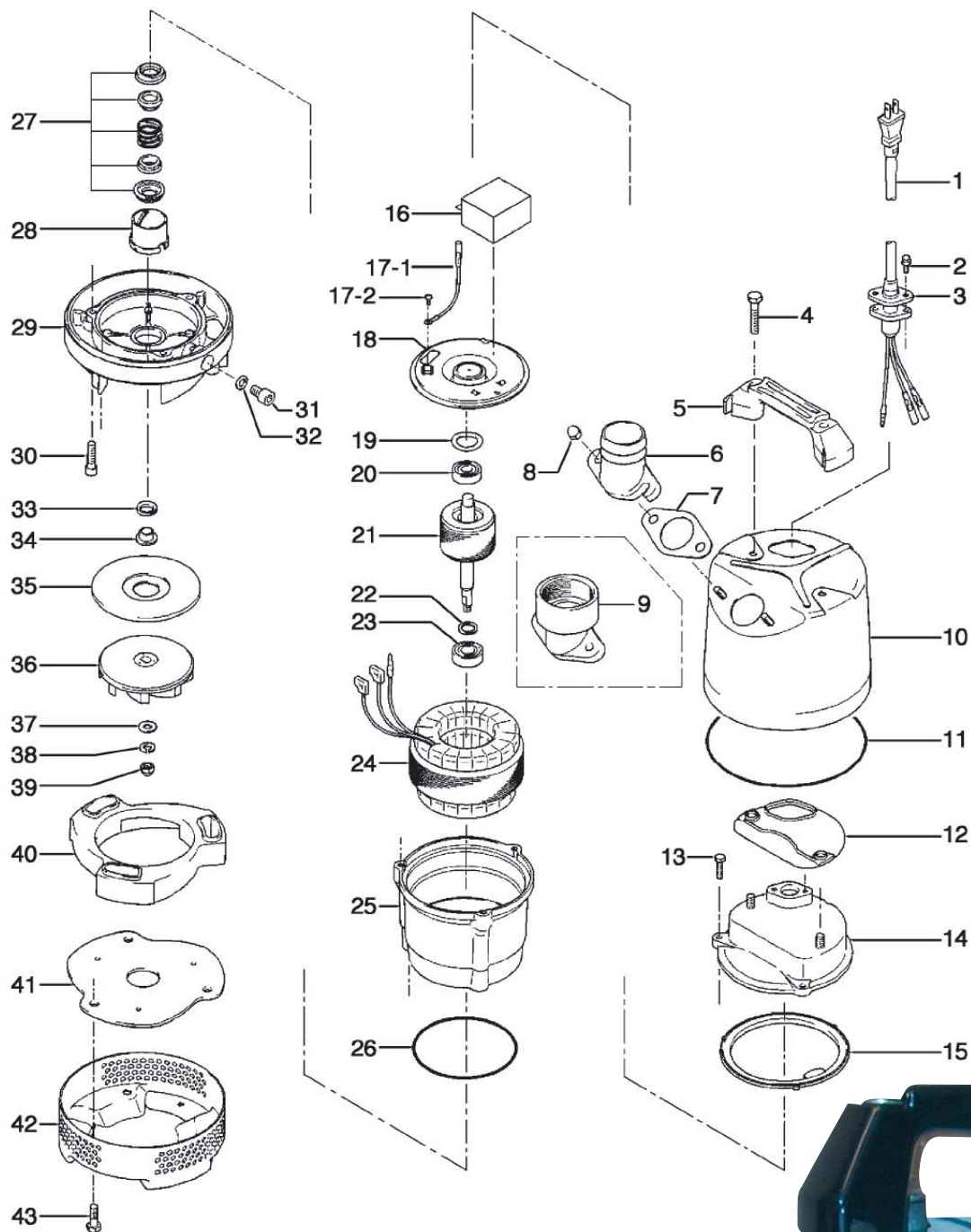


## >> Reservedelsliste LB 480 51/52



>> Se listen på bagsiden!

**STARING**

Staring Maskinfabrik A/S  
Starengvej 9-11  
DK-9700 Brønderslev

Tlf.: +45 9882 1622  
Fax: +45 9882 5591  
www.staring.dk  
staring@staring.dk

CVR.nr. DK 2767 2701



## >> Reservedelsliste LB 480 51/52

| ITEM | CODE No.   | DESCRIPTION                       | Q'TY | SIZE                                  | MATERIAL | REMARKS               |
|------|------------|-----------------------------------|------|---------------------------------------|----------|-----------------------|
| 1    | 001-453-18 | Cabtyre Cable                     | 10m  | H07RN3Cx1mm <sup>2</sup> (w/ plug)    | HAR      | 230V                  |
| 1    | 001-873-18 | Cabtyre Cable                     | 10m  | H07RN3Cx1,5mm <sup>2</sup> (w/o plug) | HAR      | 110V                  |
| 1A   | 061-TEG-01 | Cable Repair Kit                  | 1    |                                       |          |                       |
| 2    | 140-427-17 | Hex. Bolt (w/Plain Washer)        | 2    | M5x15                                 | SUS304   |                       |
| 3    | 003-100-13 | Gland                             | 1    |                                       | LB       |                       |
| 4    | 140-505-10 | Hex. Bolt (w/Plain Washer)        | 2    | M5x55                                 | SUS304   |                       |
| 5    | 068-000-06 | Handle                            | 1    | LB-250/480-51/61                      | Resin    |                       |
| 6    | 032-000-12 | Hose Coupling                     | 1    | 50mm (LB-480-51/61)                   | ADC      |                       |
| 6    | 032-000-23 | Screwed Flange                    | 1    | 50mm                                  |          |                       |
| 7    | 121-587-17 | Packing                           | 1    | LB2-250/480-51/61                     | NBR      | *                     |
| 8    | 141-144-10 | Hex.nat (w/Flange)                | 2    | M8                                    | SUS304   |                       |
| 9    | 032-000-03 | Screwed Flange 50mm inside thread | 1    | 50mm(LB-480-51/61)                    |          |                       |
| 9    | 032-000-04 | Screwed Flange 40mm inside thread | 1    | 40mm(LB-480-51/61)                    |          |                       |
| 10   | 065-382-13 | Outer Cover                       | 1    | LB-250/480-51/61                      | SPC      |                       |
| 11   | 122-453-16 | O-Ring                            | 1    | 172x1O2.7                             | NBR      | *                     |
| 12   | 121-434-18 | Packing                           | 1    | LB3-250/480                           | Rubber   | *                     |
| 13   | 140-396-16 | Hex.Bolt (w/Plain Washer)         | 3    | M6x20                                 | SUS304   |                       |
| 14   | 051-282-19 | Head Cover                        | 1    |                                       | ADC      |                       |
| 15   | 121-546-14 | Packing                           | 1    | 11O120x11O142x6.2t                    | NBR      | *                     |
| 16   | 076-159-13 | Capacitor1@110V-50HZ(ENG)         | 1    | SH-CAP,270VAC-33MF                    |          |                       |
| 16   | 076-161-18 | Capacitor1@220/230/240-50HZ(EUR)  | 1    | SH-CAP,500VAC-9MF                     |          |                       |
| 17-1 | 009-000-01 | Earth terminal                    |      |                                       |          |                       |
| 17-2 | 143-203-14 | Pan Screw                         | 1    | M4x5                                  | BSBM     |                       |
| 18   | 050-486-12 | Motor Bracket                     | 1    |                                       | SECD     |                       |
| 19   | 142-451-16 | Wave Washer                       | 2    | BWW-6201,D=32,T=0.25                  | SUP      |                       |
| 20   | 052-100-15 | Bearing                           | 1    | 6201ZZC3                              |          |                       |
| 21   | 055-889-14 | Rotor                             | 1Set | w/bearing                             |          |                       |
| 22   | 061-180-17 | Bearing Coller                    | 1    |                                       | SS       |                       |
| 23   | 052-101-16 | Bearing                           | 1    | 6202ZZC3                              |          |                       |
| 24   | 056-C67-13 | Stator1@110V-50HZ(ENG)            | 1Set |                                       |          | 110V                  |
| 24   | 056-C70-19 | Stator1@220/230/240-50HZ(EUR)     | 1Set |                                       |          | 230V                  |
| 25   | 064-508-14 | Motor Frame                       | 1    |                                       | ADC      |                       |
| 26   | 122-133-17 | O-Ring                            | 1    | G-110                                 | NBR      | *                     |
| 27   | 025-291-10 | Mechanical Seal                   | 1    | W-14VL                                | SiC+CCBN | Oil 150 ml (ISO VG32) |
| 28   | 030-000-09 | Oil Lifter                        | 1    | W-14VL                                | Resin    |                       |
| 29   | 029-000-70 | Oil Casing                        | 1    | LB-250/480-51/61                      | ADC      |                       |
| 30   | 140-252-19 | Hex.Socket Cap Screw              | 3    | M6x20                                 | SUS304   |                       |
| 31   | 035-124-12 | Oil Plug                          | 1    | M10x15                                | SUS304   |                       |
| 32   | 121-246-11 | Packing                           | 1    | 11O10.3x11O16x2t                      | PE       | *                     |
| 33   | 122-441-11 | V-Ring                            | 1    | VR-14                                 | NBR      |                       |
| 34   | 071-292-14 | Shaft Sleeve                      | 1    | LB3-250/480                           | SUS304   |                       |
| 35   | 031-000-01 | Wear Ring                         | 1    | LB-250/480-51/61                      | Nylon    |                       |
| 36   | 021-L80-12 | Impeller                          | 1    | 50Hz                                  | Rubber   |                       |
| 36   | 021-L79-18 | Impeller                          | 1    | 60Hz                                  | Rubber   |                       |
| 37   | 142-127-10 | Plain Washer                      | 1    | M8                                    | SUS304   |                       |
| 38   | 142-163-18 | Spring Washer                     | 1    | M8                                    | SUS304   |                       |
| 39   | 141-030-12 | Hex.Cap Nut                       | 1    | M8                                    | SUS304   |                       |
| 40   | 020-B89-19 | Pump Casing                       | 1    | LB-250/480-51/61                      | Rubber   |                       |
| 41   | 022-001-28 | Suction Cover                     | 1    | LB-250/480-51/61                      | SPHC     |                       |
| 42   | 023-547-18 | Strainer Stand                    | 1    | LB-250/480-51/61                      | SPC      |                       |
| 43   | 140-503-18 | Hex.Bolt (w/Plain Washer)         | 3    | M8x16                                 | SUS304   |                       |
|      |            | <Packing O-Ring Set>              |      |                                       |          |                       |
|      | 173-567-12 | Packing O-Ring Set                | 1Set | (*)                                   |          |                       |