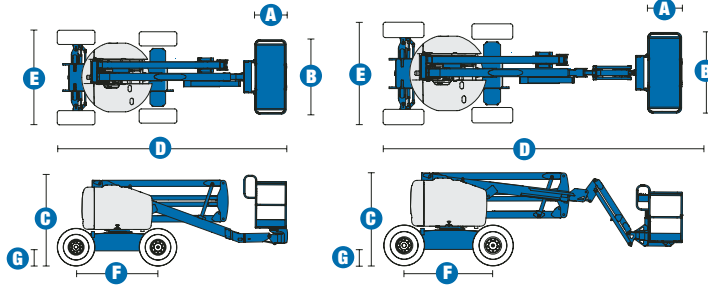
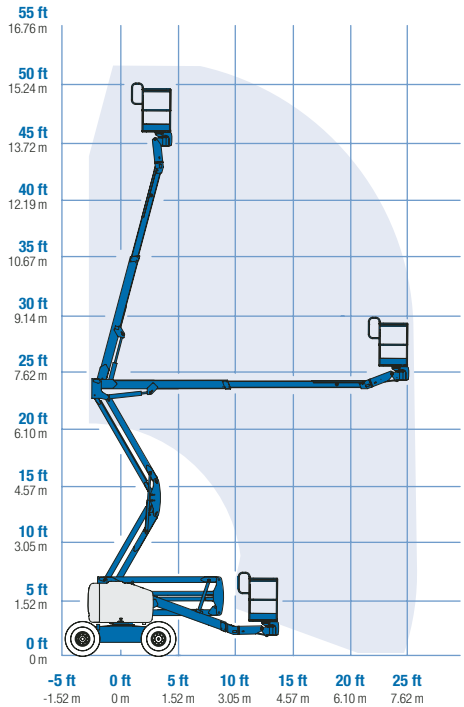


Specifications



RANGE OF MOTION Z™-45/25 RT



MODELS	Z™-45/25 RT		Z™-45/25J RT	
	Metric	US	Metric	US
Working height max*	15.94 m	51 ft 9 in	16 m	52 ft
Platform height max	13.94 m	45 ft 9 in	14 m	46 ft
Horizontal reach max	7.62 m	25 ft	7.65 m	25 ft 1 in
Up and over clearance - at platform	7.16 m	23 ft 6 in	7.37 m	24 ft 2 in
at primary arm	7.16 m	23 ft 6 in	7.06 m	23 ft 2 in
A Platform length	76 cm	2 ft 6 in	76 cm	2 ft 6 in
B Platform width	1.83 m	6 ft	1.83 m	6 ft
C Height - stowed	2.06 m	6 ft 9 in	2.06 m	6 ft 9 in
D Length - stowed	5.56 m	18 ft 3 in	6.83 m	22 ft 5 in
E Width	2.29 m	7 ft 6 in	2.29 m	7 ft 6 in
F Wheelbase	2.06 m	6 ft 8 in	2.06 m	6 ft 8 in
G Ground clearance - centre	34 cm	1 ft 1.5 in	34 cm	1 ft 1.5 in

PRODUCTIVITY

Lift capacity	227 kg	500 lbs	227 kg	500 lbs
Platform rotation	180°		160°	
Turntable rotation	355° non-continuous		355° non-continuous	
Turntable tailswing	zero		zero	
Drive speed - stowed	6.4 km/h	4.0 mph	6.4 km/h	4.0 mph
Drive speed - raised **	1.1 km/h	0.68 mph	1.1 km/h	0.68 mph
Gradeability*** - 2WD	30%		30%	
Gradeability*** - 4WD	45%		45%	
Turning radius - inside	2.10 m	6 ft 11 in	2.10 m	6 ft 11 in
Turning radius - outside	4.55 m	14 ft 11 in	4.55 m	14 ft 11 in
Controls	12 V DC proportional		12 V DC proportional	
Tyres	355/55 D625		355/55 D625	

POWER

Power source	Deutz diesel F3L 2011 3 cylinder diesel 48 hp (35.8 kW)			
Auxiliary power unit	12 V DC		12 V DC	
Hydraulic tank capacity	90.9 L	24 gal	90.9 L	24 gal
Fuel tank capacity	64.4 L	17 gal	64.4 L	17 gal

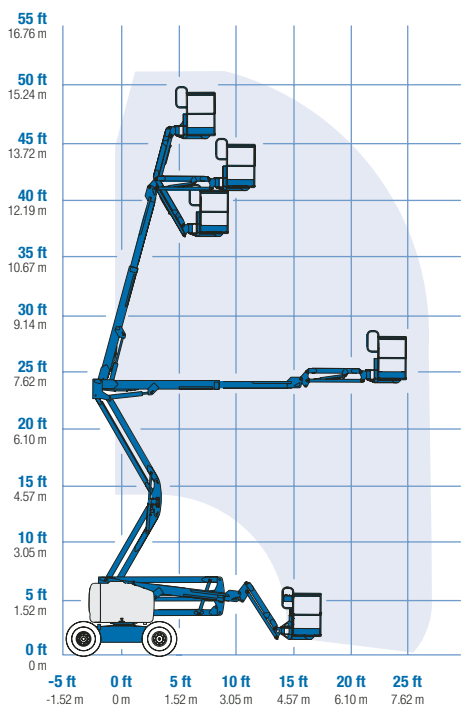
WEIGHT****

2WD	6,169 kg	13,600 lbs	6,509 kg	14,350 lbs
4WD	6,255 kg	13,790 lbs	6,600 kg	14,550 lbs

STANDARDS COMPLIANCE

CE EN280

RANGE OF MOTION Z™-45/25J RT



* The metric equivalent of working height adds 2 m to platform height. U.S. adds 6 ft to platform height.

** In lift mode (platform raised), the machine is designed to operate on firm, level surfaces only.

*** Gradeability applies to driving on slopes. See operator's manual for details regarding slope ratings.

**** Weight will vary depending on options and/or country standards.

Features

EASILY CONFIGURED TO MEET YOUR NEEDS

PLATFORM OPTIONS

- Steel 1.83 m (6 ft) (standard)
- Steel 1.22 or 1.52 m (4 or 5 ft) platform
- Steel 1.83 m (6 ft) tri-entry platform

JIB OPTIONS

- 1.52 m (5 ft) jib boom
- Non-jib

DRIVE OPTIONS

- 2WD
- 4WD

AXLE OPTIONS

- Oscillating (standard on 4WD)
- Non-oscillating

TYRE OPTIONS

- Rough terrain air-filled (standard)
- Rough terrain foam-filled
- Rough terrain non-marking (air or foam-filled)
- High flotation

STANDARD FEATURES

MEASUREMENTS

Z™-45/25 RT

- 15.94 m (51 ft 9 in) working height
- 7.62 m (25 ft) horizontal reach
- 7.16 m (23 ft 6 in) up and over clearance
- Up to 227 kg (500 lb) lift capacity

Z™-45/25J RT

- 16 m (52 ft) working height
- 7.65 m (25 ft) horizontal reach
- 7.06 m (23 ft 2 in) up and over clearance
- Up to 227 kg (500 lb) lift capacity

PRODUCTIVITY

- Self-leveling platform
- Hydraulic platform rotation
- Fully proportional controls
- Drive enable
- AC power to platform
- Horn
- Hour meter
- Tilt alarm
- 355° non-continuous turntable rotation
- Positive traction drive
- Two-speed wheel motors
- Fully certified load sensor



STANDARD FEATURES cont.

POWER

- All engines are emission compliant
- 12 V DC auxiliary power
- Engine protection package
- Deutz intake air heater
- Swing-out engine tray

OPTIONS & ACCESSORIES

PRODUCTIVITY

- Platform swing gate
- Half mesh platform inserts with swing gate
- Platform top auxiliary rail
- Air line to platform
- Thumb rocker steer
- Arctic hydraulic oil
- Arctic hose (boom hoses only)
- Standard aircraft protection
- Deluxe aircraft protection
- Hostile environment kit
- Tool tray
- Fluorescent tube caddy
- Pipe cradle (pair)
- Alarm package
- Panel cradle package
- Platform work lights
- Front driving lights
- Lockable platform control box cover
- Tow package
- AC generator packages (2500, 3000, and 3500 watts)

POWER

- Engine gauge package
- AC generator packages (2500, 3000, and 3500 watts)
- Cold start packages
- Diesel scrubber/spark arrestor
- Diesel spark arrestor muffler

European Offices

UK

The Maltings
Wharf Road
Grantham NG31 6BH
UK
Tel: +44 (0)1476 584333
Fax: +44 (0)1476 584334

France

10, ZA de la Croix St. Mathieu
28320 Gallardon
France
Tel: +33 (0)2 37 26 09 99
Fax: +33 (0)2 37 26 09 98

Germany

Finienweg 3
28832 Achim/Bremen
Germany
Tel: +49 (0)4202 8852-0
Fax: +49 (0)4202 8852-20

Spain

Gaià 31, Pol. Ind. Plà d'en Coll
08110 Montcada i Reixac
Barcelona
Spain
Tel: +34 93 572 50 90
Fax: +34 93 572 50 91

Scandinavia

Tagenevägen 72
425 37 Hisings Kärra
Sweden
Tel: +46 31 57 51 00
Fax: +46 31 57 90 20

Genie United States

18340 NE 76th Street
P.O. Box 97030
Redmond, Washington 98073-9730
USA
Tel: +1 425 881-1800
Fax: +1 425 883-3475

WEB: www.genieindustries.com
Email: infoeurope@genieind.com

Distributed By: