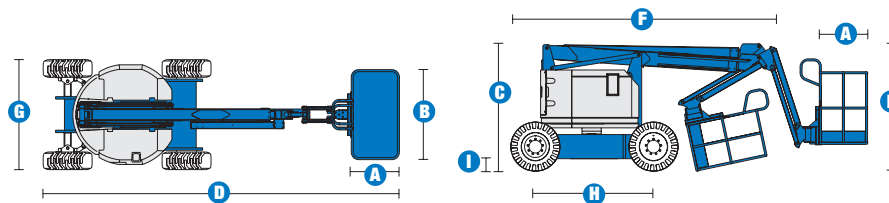
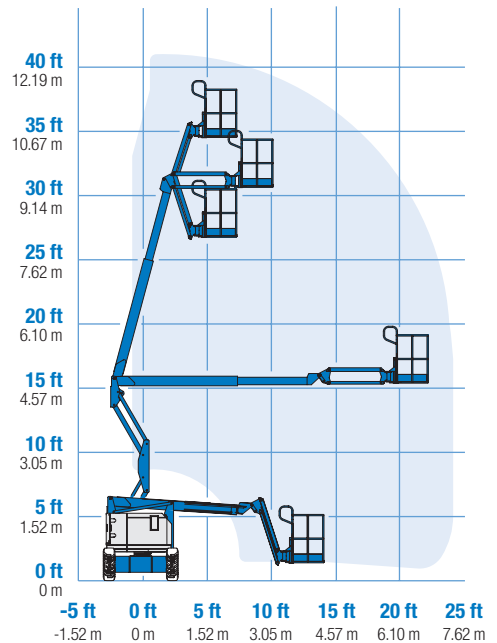


Specifications



RANGE OF MOTION Z™-34/22 IC



MODELS	Z™-34/22 IC 2WD		Z™-34/22 IC 4WD	
	Metric	US	Metric	US
Working height max*	12.52 m	40 ft 6 in	12.62 m	40 ft 10 in
Platform height max	10.52 m	34 ft 6 in	10.62 m	34 ft 10 in
Horizontal reach max	6.78 m	22 ft 3 in	6.78 m	22 ft 3 in
Up and over clearance - at platform at jib	4.57 m	15 ft	4.60 m	15 ft 1 in
	4.55 m	14 ft 11 in	4.57 m	15 ft
A Platform length	76 cm	2 ft 6 in	76 cm	2 ft 6 in
B Platform width	1.42 m	4 ft 8 in	1.42 m	4 ft 8 in
C Height - stowed	2 m	6 ft 7 in	2.06 m	6 ft 9 in
D Length - stowed	5.64 m	18 ft 6 in	5.67 m	18 ft 7 in
E Storage height	2.26 m	7 ft 5 in	2.26 m	7 ft 6 in
F Storage length	4.11 m	13 ft 5 in	4.11 m	13 ft 6 in
G Width	1.73 m	5 ft 8 in	1.85 m	6 ft 1 in
H Wheelbase	1.88 m	6 ft 2 in	1.88 m	6 ft 2 in
I Ground clearance - centre	15 cm	6 in	17 cm	6.5 in

PRODUCTIVITY

Lift capacity	227 kg	500 lbs	227 kg	500 lbs
Platform rotation	180°		180°	
Vertical jib rotation	144°		144°	
Turntable rotation	355° non-continuous		355° non-continuous	
Turntable tailswing	zero		zero	
Drive speed - stowed	6.4 km/h	4.0 mph	5.6 km/h	3.5 mph
Drive speed - raised **	1.1 km/h	0.68 mph	1.1 km/h	0.68 mph
Gradeability***	37%		45%	
Turning radius - inside	1.75 m	5 ft 9 in	1.80 m	5 ft 11 in
Turning radius - outside	3.98 m	13 ft 1 in	4.11 m	13 ft 6 in
Controls	12 V DC proportional		12 V DC proportional	
Tyres	23 x 37 cm	9 x 14.5 in	25 x 42 cm	10 x 16.5 in
	foam filled		rough terrain air filled	

POWER

Power source	Kubota DF-905 diesel 23.5 hp (17.5 kW) Perkins 403-C11 diesel 26.1 hp (19.5 kW)			
Auxiliary power unit	12 V DC		12 V DC	
Hydraulic tank capacity	71.9 L	19 gal	71.9 L	19 gal
Fuel tank capacity	35.2 L	9.3 gal	35.2 L	9.3 gal

WEIGHT****

	4,795 kg	10,570 lbs	4,740 kg	10,450 lbs
--	----------	------------	----------	------------

STANDARDS COMPLIANCE

CE EN280

* The metric equivalent of working height adds 2 m to platform height. U.S. adds 6 ft to platform height.

** In lift mode (platform raised), the machine is designed to operate on firm, level surfaces only.

*** Gradeability applies to driving on slopes. See operator's manual for details regarding slope ratings.

**** Weight will vary depending on options and/or country standards.

Features

EASILY CONFIGURED TO MEET YOUR NEEDS

PLATFORM

- Steel 1.42 m (4 ft 8 in) (standard)
- 1.22 m (4 ft) jib boom

POWER OPTIONS

- Kubota diesel 23.5 hp (17.5 kW)
- Perkins diesel 26.1 hp (19.5 kW)

DRIVE OPTIONS

- 2WD
- 4WD

TYRE OPTIONS

- Rough terrain air-filled (standard 4WD)
- Industrial foam-filled (standard on 2WD)
- Industrial non-marking foam-filled
- Rough terrain foam-filled
- High flotation air-filled (4 WD)

STANDARD FEATURES

MEASUREMENTS

Z™-34/22 IC 2WD

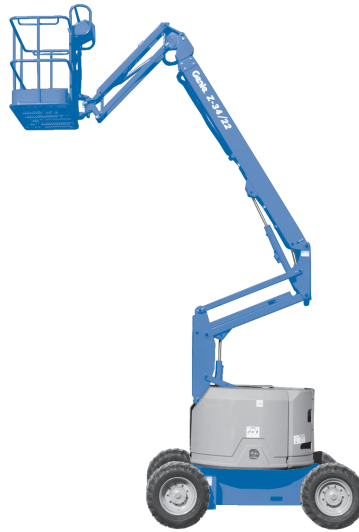
- 12.52 m (40 ft 6 in) working height
- 6.78 m (22 ft 3 in) horizontal reach
- 4.54 m (14 ft 11 in) up and over clearance
- Up to 227 kg (500 lb) lift capacity

Z™-34/22 IC 4WD

- 12.62 m (40 ft 10 in) working height
- 6.78 m (22 ft 3 in) horizontal reach
- 4.57 m (15 ft) up and over clearance
- Up to 227 kg (500 lb) lift capacity

PRODUCTIVITY

- 1.22 m (4 ft) jib with 144° working range
- Self-leveling platform
- Hydraulic platform rotation
- Fully proportional controls
- Drive enable
- AC power to platform
- Horn
- Hour meter
- Tilt alarm
- 355° non-continuous turntable rotation
- Lockable turntable covers
- Zero tailswing and front arm swing
- Two speed wheel motors
- Fully certified load sensor



STANDARD FEATURES cont.

POWER

- All engines are emissions compliant
- 12 V DC auxiliary power
- Engine protection package

OPTIONS & ACCESSORIES

PRODUCTIVITY

- Platform swing gate
- Half mesh platform inserts with swing gate
- Air line to platform
- Arctic hydraulic oil
- Hostile environment kit
- Standard aircraft protection
- Deluxe aircraft protection package
- Tool tray
- Fluorescent tube caddy
- Pipe cradle (pair)
- Alarm package
- Platform work lights
- Lockable platform control box covers

POWER

- Engine gauge package
- AC generator packages 2000 watt generator (110 V, 230 V/50 Hz)
- Cold start packages

European Offices

UK

The Maltings
Wharf Road
Grantham NG31 6BH
UK
Tel: +44 (0)1476 584333
Fax: +44 (0)1476 584334

France

10, ZA de la Croix St. Mathieu
28320 Gallardon
France
Tel: +33 (0)2 37 26 09 99
Fax: +33 (0)2 37 26 09 98

Germany

Finienweg 3
28832 Achim/Bremen
Germany
Tel: +49 (0)4202 8852-0
Fax: +49 (0)4202 8852-20

Spain

Gaià 31, Pol. Ind. Plá d'en Coll
08110 Montcada i Reixac
Barcelona
Spain
Tel: +34 93 572 50 90
Fax: +34 93 572 50 91

Scandinavia

Tagenevägen 72
425 37 Hisings Kärra
Sweden
Tel: +46 31 57 51 00
Fax: +46 31 57 90 20

Genie United States

18340 NE 76th Street
P.O. Box 97030
Redmond, Washington 98073-9730
USA
Tel: +1 425 881-1800
Fax: +1 425 883-3475

WEB: www.genieindustries.com
Email: infoeurope@genieind.com

Distributed By: