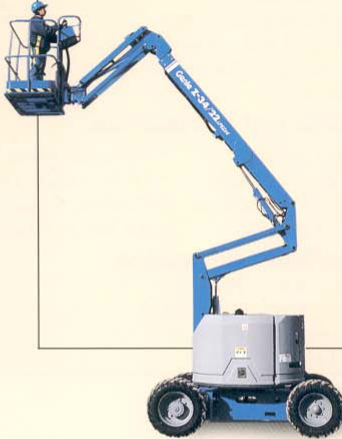




**Self-Propelled
Articulating
Boom**

Z-34/22 IC

○ Unbeatable engine package for optimum speed and performance.



IC Series:
G/LPG 4x2 D 4x2
G/LPG 4x4 D 4x4

Genie Industries

Z-34/22 IC

Z-34/22 IC Series with Gas/LPG or Diesel power options.

- The Z-34/22 IC Series combines the **industry leading lift structure with an unbeatable engine package.**
- A new drive system, with a high quality, axial piston pump and integrated controls, provides the **smooth control, durability and efficient power transmission required for rough terrain operation.**
- Two-speed hydraulic motors **provide optimum speed and torque.** The 4x2 model operates at **0-4.5 mph (0-7.2 km/h) with 37% gradeability.** The 4x4 model operates at **0- 4.0 mph (0- 6.4 km/h) with 45% gradeability.**
- Zero tailswing and nose swing in all positions

with a 68 in (1.7 m) wide 4x2 model and 70 in (1.8 m) wide 4x4 model provides **excellent maneuverability in confined areas.**

- Dual parallelogram riser allows ascent and descent along a vertical plane without retraction or extension of the boom.

Standard Features

- 40 ft 8 in (12.4 m) working height
- 22 ft 4 in (6.8 m) horizontal reach
- Compact 68 in (1.7 m) width 4x2 model and 70 in (1.8 m) 4x4 model
- 500 lb (227 kg) platform capacity
- 4 ft (1.2 m) jib features 147° working range
- Dual wheel spring applied brakes
- Fully proportional controls
- 160° powered platform rotation
- Auxiliary power unit
- Drive enable system
- Self-leveling platform
- Water, oil and voltage gauges
- AC wiring to platform
- Hour meter

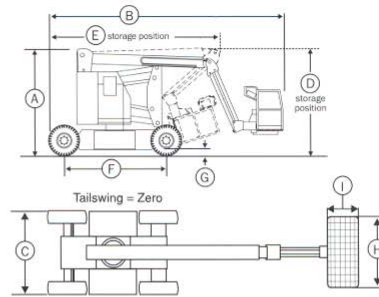
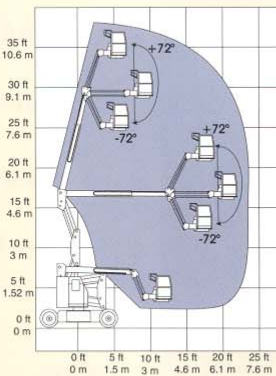
Options and Accessories

- Alarm package
- Cold start package
- 4 ft (1.2 m) platform
- Gated platform
- Foam filled tires
- 10-16.5 rough terrain tires for 4x2
- Platform-mounted work light
- Air line to platform

Standards Compliance

- ANSI/SIA A92.5
- CSA/CAN3-B354.4-M82
- CE compliance option
- AS 1418.10

Range of Motion



Specifications

Model	4x2		4x4	
	US	Metric	US	Metric
Working height	40 ft 8 in	12.4 m	40 ft 8 in	12.4 m
Platform height	34 ft 8 in	10.6 m	34 ft 8 in	10.6 m
(A) Height - stowed	6 ft 7 in	2 m	6 ft 8 in	2 m
(B) Length - stowed	18 ft 6 in	5.6 m	18 ft 7 in	5.7 m
(C) Width	5 ft 8 in	1.7 m	5 ft 10 in	1.8 m
(D) Storage height	89 in	2.3 m	90 in	2.3 m
(E) Storage length	13 ft 5 in	4.1 m	13 ft 6 in	4.1 m
(F) Wheelbase	6 ft 2 in	1.9 m	6 ft 2 in	1.9 m
(G) Ground clearance	5 3/4 in	14.6 cm	6 1/2 in	16.5 cm
(H) Platform width	56 in	1.4 m	56 in	1.4 m
(I) Platform length	30 in	76 cm	30 in	76 cm
Horizontal reach	22 ft 4 in	6.8 m	22 ft 4 in	6.8 m
Up and over clearance	15 ft	4.6 m	15 ft	4.6 m
Lift capacity	500 lbs	227 kg	500 lbs	227 kg
Turning radius - outside	13 ft 1 in	4 m	13 ft 1 in	4 m
Turning radius - inside	5 ft 8 in	1.7 m	5 ft 8 in	1.7 m
Turntable rotation	355°		355°	
Turntable tailswing	Zero		Zero	
Power source	Kubota G/LPG 24.5 hp Kubota Diesel 26 hp		Kubota G/LPG 24.5 hp Kubota Diesel 26 hp	
Drive speed - stowed	0-4.5 mph	0-7.2 km/h	0-4.0 mph	0-6.4 km/h
Drive speed - raised or extended	0.6 mph	1.0 km/h	0.6 mph	1.0 km/h
Extension speed	40 ft/40 sec	12.2 m/40 sec	40 ft/40 sec	12.2 m/40 sec
Controls	proportional		proportional	
Platform rotation	160°		160°	
AC wiring to platform	standard		standard	
Tires	9-14.5 industrial		10-16.5 rough terrain	
Gradeability*	37%		45%	
Hydraulic capacity tank	18 gal	68 ltr	18 gal	68 ltr
Fuel tank capacity	11.5 gal	44 ltr	11.5 gal	44 ltr
Weight	10,500 lb	4,763 kg	10,700 lb	4,854 kg

*Stowed position only

Distributed By:

Genie Industries

GENIE UNITED STATES

18340 NE 76th Street
P.O. Box 97030
Redmond, Washington 98073-9730
Telephone (425) 881-1800
Toll Free in USA/Canada 800-536-1800
Fax (425) 883-3475
http://www.genielift.com

GENIE UNITED KINGDOM

Brunel Drive
Newark
Nottinghamshire
NG24 2EG England
Telephone (44) 01636-605030
Fax (44) 01636-611090
http://www.genielift.com

For further information please contact your local distributor or the Genie sales office listed. Continuous improvement of our products is a Genie policy. Product specifications are subject to change with out notice or obligation. The photographs and drawings in this brochure are for illustrative purposes only. Refer to the appropriate "Genie Z-34/22 IC Series Operator's Manual" for instructions on the proper use of this equipment. Failure to follow the appropriate Operator's Manual when using a Genie Z-34/22 IC, or to otherwise act irresponsibly, may result in serious injury or death. Copyright© 1996 by Genie Industries. Printed in the USA on recyclable paper. "Genie" and "Z" are Registered Trademarks of Genie Industries in the USA and many other countries. Z34IC 35K 0398B