



## Self-Propelled Articulating Boom

**Z-45/25 & Z-45/25J  
DC and Bi-Energy**

○ Efficient electric  
or Bi-Energy power  
for all day use.



**Genie Industries**

## Make short work of big jobs.

With an extended reach, models with jibs, and a variety of new performance features, the Z-45/25 DC/Bi-Energy handles the most challenging high-reach jobs. The revolutionary Genie Bi-Energy system combines the quiet, emission-free and efficient operation of a 48V DC machine with the versatility of a diesel-powered generator machine to provide a boom that is ideal for indoor and outdoor applications.

### Quick and Manoeuvrable

The Z-45/25's enhanced design helps get you where you need to go, quickly and easily. The new 1.52 m (5 ft) inside turning radius delivers excellent manoeuvrability. Z-45/25J models with a 1.52 m (5 ft) articulating jib boom are also available to provide a 135° range of motion.

### Unsurpassed Speed and Gradeability

This 4x2 is the fastest boom in its class. Travels 4.8 km/h (3 mph) with 30% gradeability.

### Dual Parallelogram Riser

Advanced design allows ascent and descent along a vertical plane with or without retraction or extension of the boom.

### Large Platform with Hydraulic Rotation

The 6 ft (1.83 m) all-steel platform lifts up to 227 kg (500 lb). Dimensions of 76 cm x 1.83 m (30 x 72 in) allow ample space for two workers and their tools. Platform features a 180° hydraulic rotation for Z-45/25 models and a 160° hydraulic rotation for Z-45/25J models. Also includes automatic platform leveling with a manual hydraulic override system and an AC power outlet.

### Ground Controls

Located at eye level with easy to understand controls and including auxiliary power, key switch, emergency stop, hour meter and boom functions.

### Safety in Sight

All instructional and safety decals are straightforward and conveniently located to be clearly visible.

### Drive Enable System

Informs operator when the drive and steer functions will move opposite controller movements.



**Z-45/25 & Z-45/25J  
DC and Bi-Energy**



**Power for the Long Haul**

The Bi-Energy always operates with the all new, Sep-Ex 48V DC drive system and has the added feature of an on-board diesel powered generator. The generator acts as a 100 amp battery charger to provide enough electrical power to operate all boom functions even when the batteries are fully discharged.

The Kubota Z482, 12 hp, water cooled, 2-cylinder, diesel powered generator package will charge a fully discharged machine in only 3.5 hours.

The Kubota Z482 diesel will operate for approximately 17 hours before refueling is necessary.

The direct electric, 48V drive system provides outstanding battery life when not using the engine generator.

An on-board 25 amp AC charger is standard to provide a means for overnight charging.

**Reach**

The 15.8 m (51 ft 5in) working height, outreach of at least 7.5 m (24 ft 6 in) – for both the Z-45/25 and Z-45/25J models – and up and over clearance of at least 6.9 m (22 ft 6 in) lets you reach higher and farther than ever before.

**Increased Strength**

Larger, stiffer primary boom and extension tubes offer increased strength and durability. Improved cable track includes box tube support combined with a wider plastic track.

**Fewer Parts Overall**

Commonality among Z-45/25 models results in fewer service requirements.

**Maintenance Made Easy**

The Bi-Energy component tray swings out 90° for complete accessibility during routine maintenance and repairs.



# Z-45/25 & Z-45/25J DC and Bi-Energy

## Standard Features

- 15.8 m (51 ft 5 in) working height
- At least 7.5 m (24 ft 6 in) horizontal reach
- Up and over clearance of over 6.9 m (22 ft 6 in)
- 1.52 m (5 ft) turning radius
- 227 kg (500 lb) lift capacity
- Fully proportional controls
- Hydraulic platform rotation
- 24V DC auxiliary power unit
- Drive enable system
- End mount platform on Z-45/25J models
- AC wiring to platform

- Tilt alarm
- Horn
- Hour meter
- Industrial air tyres

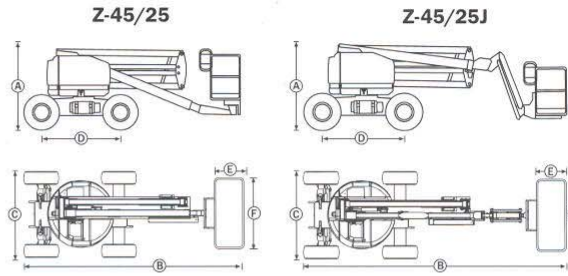
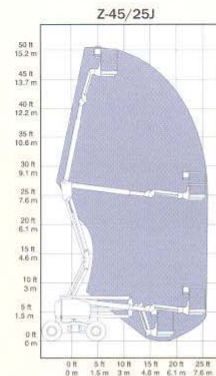
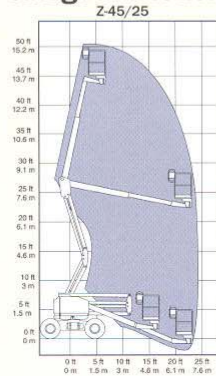
## Options and Accessories

- Alarm package
- Platform swing gate
- Air line to platform
- Full rail platform pinch guard
- Platform work light
- Platform control box cover
- Foam filled and non-marking tyre packages

## Standards Compliance

- CE EN280

## Range of Motion



## Specifications

	Z-45/25		Z-45/25J	
	Metric	Imperial	Metric	Imperial
Working height <sup>1</sup>	15.8 m	51 ft 5 in	15.8 m	51 ft 3 in
Platform height	13.8 m	45 ft 5 in	13.8 m	45 ft 3 in
(A) Height - stowed	2 m	6 ft 7 in	2 m	6 ft 7 in
(B) Length - stowed	5.5 m	18 ft	6.8 m	22 ft 3 in
(C) Width	1.75 m	5 ft 9 in	1.75 m	5 ft 9 in
(D) Wheelbase	2.03 m	6 ft 8 in	2.03 m	6 ft 8 in
Ground clearance - centre	22 cm	8 1/2 in	22 cm	8 1/2 in
Ground clearance - min	18 cm	7 in	18 cm	7 in
(E) Platform length	76 cm	30 in	76 cm	30 in
(F) Platform width	1.83 m	72 in	1.83 m	72 in
Horizontal reach max	7.5 m	24 ft 6 in	7.7 m	25 ft 3 in
Up and over clearance	6.9 m	22 ft 6 in	7.1 m	23 ft 5 in
Lift capacity	227 kg	500 lb	227 kg	500 lb
Turning radius	1.52 m	5 ft	1.52 m	5 ft
Turntable rotation	359°		359°	
Turntable tailswing	zero		zero	
Platform rotation	180°		160°	
Power source	48V DC (8 6V 315 AH batteries) or 48V DC with Kubota Diesel 12 hp (9 kw)			
Drive speed - stowed	4.8 km/hr	3 mph	4.8 km/hr	3 mph
Drive speed - raised	1 km/hr	0.6 mph	1 km/hr	0.6 mph
Lift speed to full height	90 sec		90 sec	
Controls	24V DC proportional		24V DC proportional	
Auxiliary power unit	24V DC		24V DC	
Tyres	9 - 14.5		9 - 14.5	
Gradeability - stowed	30%		30%	
Occupied floor pressure - DC	1425 kg/sq.m	301 psf	1510 kg/sq.m	319 psf
Occupied floor pressure - Bi-Energy	1462 kg/sq.m	309 psf	1528 kg/sq.m	323 psf
Tyre contact pressure - all models	690 kPa	100 psi	690 kPa	100 psi
Hydraulic tank capacity	30 litre	8 gal	30 litre	8 gal
Fuel tank capacity	34 litre	9 gal	34 litre	9 gal
Weight - DC <sup>2</sup>	7,214 kg	15,900 lb	7,305 kg	16,100 lb
Weight - Bi-Energy <sup>2</sup>	7,305 kg	16,100 lb	7,396 kg	16,300 lb

<sup>1</sup>The metric equivalent of working height adds 2 m to platform height. Imperial adds 6 ft to platform height.

<sup>2</sup>Weight will vary on options and/or country standards.

Distributed By:

## Genie Industries

### GENIE UNITED KINGDOM

The Maltings, Wharf Road  
Grantham  
Lincolnshire NG31 6BH  
England  
Tel: +44 (0)1476 584333  
Fax: +44 (0)1476 584334  
<http://www.genielift.com>

### GENIE UNITED STATES

18340 NE 76th Street  
P.O. Box 97030  
Redmond, Washington 98073-9730  
Tel: +1 425 881 1800  
Fax: +1 425 883 3475  
<http://www.genielift.com>

For further information, please contact your local distributor or the Genie sales office listed. Continuous improvement of our products is a Genie policy. Product specifications are subject to change without notice or obligation. The photographs and drawings in this brochure are for illustrative purposes only. Refer to appropriate "Genie Z-45/25 and Z-45/25J Operator's Manual" for instructions on the proper use of this equipment. Failure to follow the appropriate Operator's Manual when using a Genie Z-45/25 or Z-45/25J or to otherwise act irresponsibly, may result in serious injury or death. Copyright © 1998 by Genie Industries. "Genie" is a Registered Trademark of Genie Industries in the USA and many other countries. "Z" is a Registered Trademark and "Z-45/25" is a Trademark of Genie Industries. 11/02, Part No. B65025UK