

MANIACCESS

180 ATJ


- Working height : 17.71 m
- Max. outreach : 10.60 m
- 230 kg including 2 people
- Diesel engine 45 HP
- Turret rotation : 350°
- 4 wheel drive
- 4 wheel steer
- Crab steer




180 ATJ

 **S.W.L.**.....230 kg including 2 people
External :wind 45 km/h


 **Working height**17.71 m
Platform floor height15.71 m

 **Overall length**7.77 m
Length (transport position)5.77 m
Overall width2.30 m
Overall height2.37 m
Basket size1.80 m x 0.80 m
Max. outreach10.60 m
up and over clearance7.15 m
Ground clearance42.5 cm
Turning radius ins/outside1.35/3.66 m


 **Turret rotation**350°
Basket rotation180°
Jib movement140°


 **Engine (Low emission)**
PERKINS 404C2245 HP

 **Maxi. travel speed**6.0 km/h
Lifting time40 s

 **Gradeability on rough terrain**40 %
Max. slope accepted5° or 9%

 **Hydraulic tank**54 l.
Diesel tank52 l.

 **Tyres**12,5 - 18
 4 wheel drive / 4 wheel steer

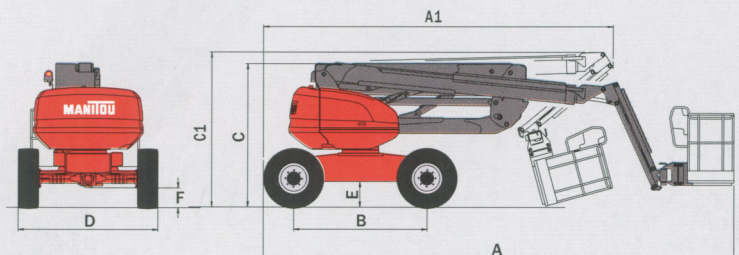
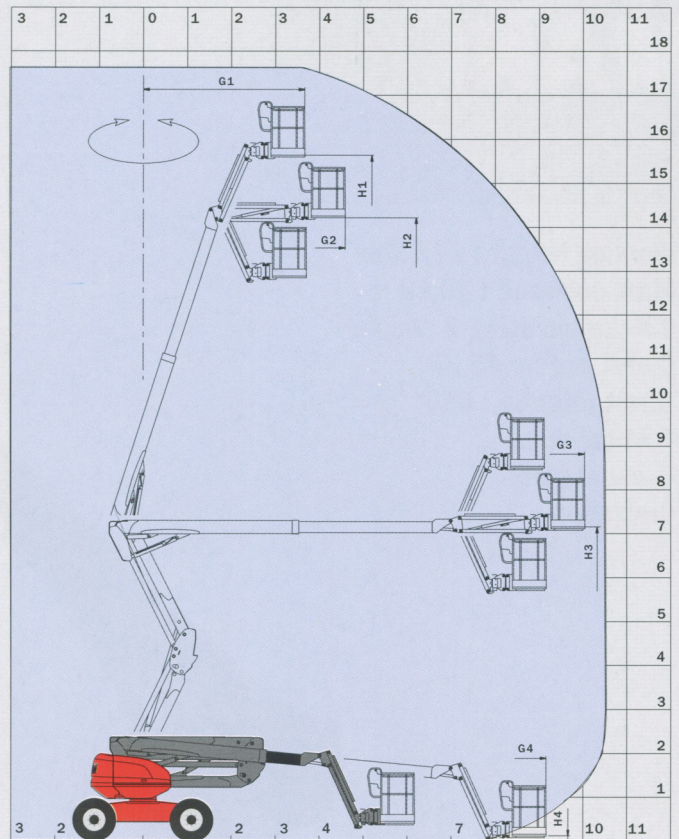
 **Weight**7950 kg

Standard equipment

- 4 simultaneous movements
- Diagnostic tools
- Foam filled tyres
- Proportional controls
- Differential lock
- Hour meter
- Tank level indicator
- Warning buzzer in the basket for slepe and overload
- Lifting brackets
- Safety electric pump
- 230 V auxiliary power cable

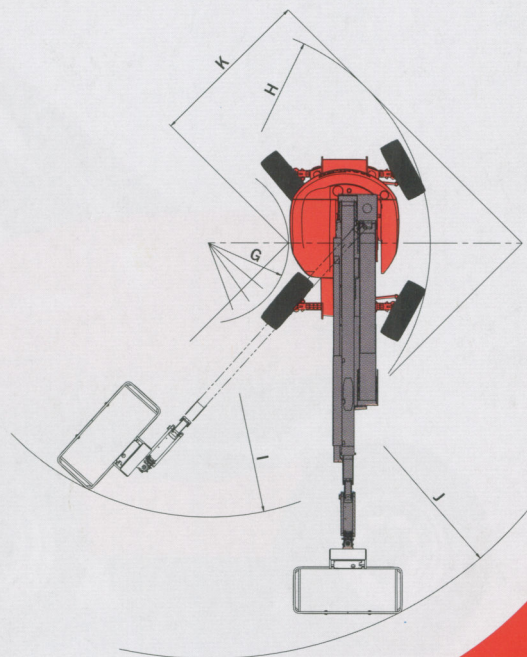
Options

- Oscilating axle
- Continuous rotation
- All motion alarm
- Transaltion alarm
- Working lights
- Electric plug in platform (230 V)
- On board generator set
- Air predisposal in the platform
- Water predisposal in the platform



| | |
|----|-------|
| A | 7775 |
| A1 | 5770 |
| B | 2200 |
| C | 2370 |
| C1 | 2560 |
| D | 2300 |
| E | 425 |
| F | 325 |
| G | 1325 |
| G1 | 3660 |
| G2 | 4580 |
| G3 | 10040 |
| G4 | 9160 |
| H | 3665 |
| H1 | 15710 |
| H2 | 14250 |
| H3 | 7150 |
| H4 | 120 |
| I | 4530 |
| J | 6875 |
| K | 2730 |

mm



This publication in no way constitutes an offer and the company reserves the right to alter specification without prior notice. The MANITOU models presented in this brochure can be supplied complete with optional equipment attachments

