

MANIACCESS

160 ATJ


- Working height : 16.25 m
- Max. outreach : 9.10 m
- S.W.L : 230 kg
- Diesel engine 47 HP
- Turret rotation : 360°
- 4 wheel drive
- 4 wheel steer
- 4 simultaneous movements
- Crab steer



160 ATJ


 **S.W.L.**230 kg including 2 people
External use :wind 45 km/h


 **Working height**16.25 m
Platform floor height14.25 m

 **Overall length**7 m
Length (transport position)5 m
Overall width2.30 m
Overall height2.37 m
Basket size1.80 m x 0.80 m
Max. outreach9.10 m
Up and over clearance7.15 m
Ground clearance42.5 cm
Turning radius ins/outside1.32/3.82 m

 **Turret rotation**360°
Basket rotation180°
Jib movement140°


 **Engine (Low emission)**
 PERKINS 404C2247 HP

 **Maxi. travel speed**5.8 km/h

 **Gradeability on rough terrain**42 %
Max. slope accepted5° or 9%

 **Hydraulic tank**55 l.
Diesel tank52 l.

 **Tyres**18
 4 wheel drive/4 wheel steer/crab steer

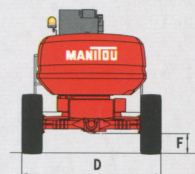
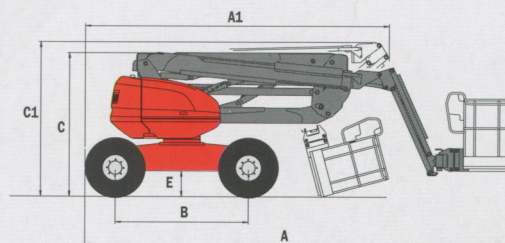
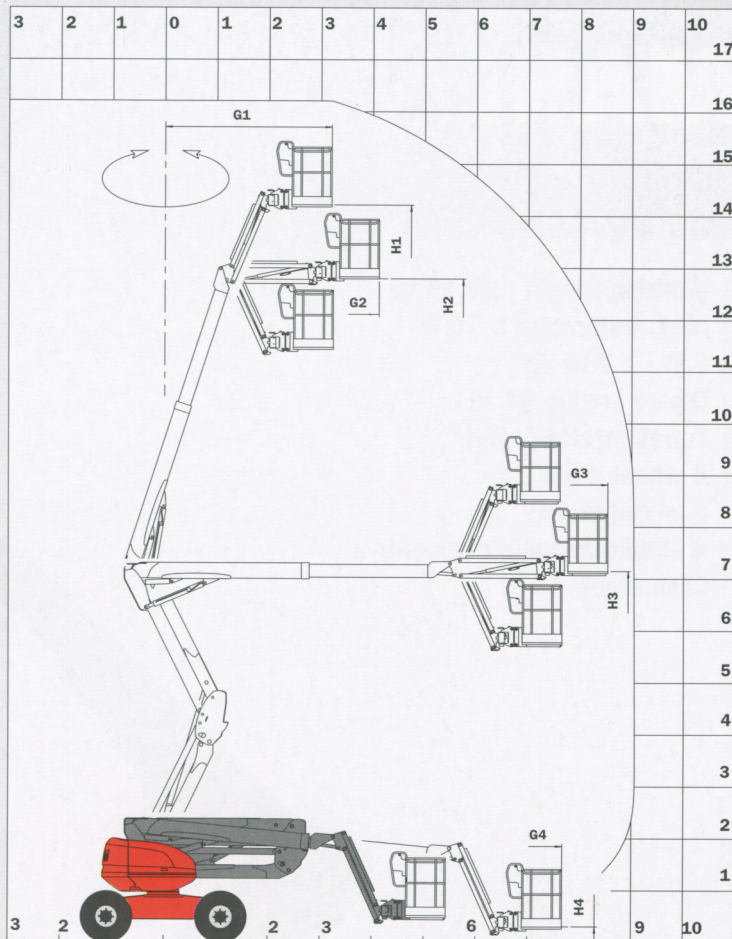
 **Weight**7450 kg

Standard equipment

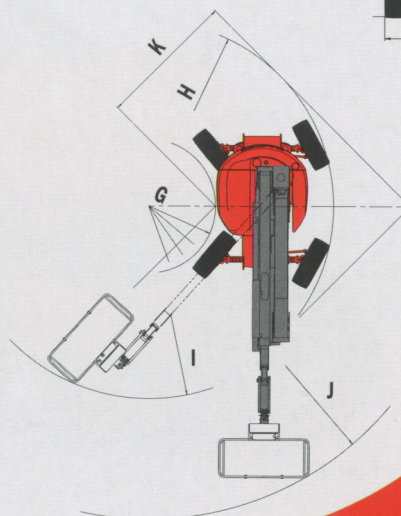
- 4 simultaneous movements
- Diagnostic tools
- Foam filled tyres
- Proportional controls
- Differential lock
- Hour meter
- Tank level indicator
- Slope and overload alarm in the basket
- Lifting brackets
- Safety electric pump
- 230 V auxiliary power cable

Options

- **Oscillating axle**
- **Continuous rotation**
- All motion alarm
- Translation alarm
- Working lights
- Electric plug in platform (230 V)
- On board generator set
- Air predisposal in the platform
- Water predisposal in the platform



	mm
A	7025
A1	5020
B	2200
C	2370
C1	2530
D	2300
E	425
F	325
G	1325
G1	3201
G2	4120
G3	8540
G4	7665
H	3665
H1	14210
H2	12790
H3	7150
H4	305
I	785
J	6215
K	2730



This publication in no way constitutes an offer and the company reserves the right to alter specification without prior notice. The MANITOU models presented in this brochure can be supplied complete with optional equipment attachments.



MANITOU B.F. S.A.
 B.P.249 - 44158 ANCENIS CEDEX - FRANCE
 TEL : 33 2 40 09 10 11
 EXPORT DEPARTMENT FAX : 33 2 40 09 10 97
 www.manitou.com