

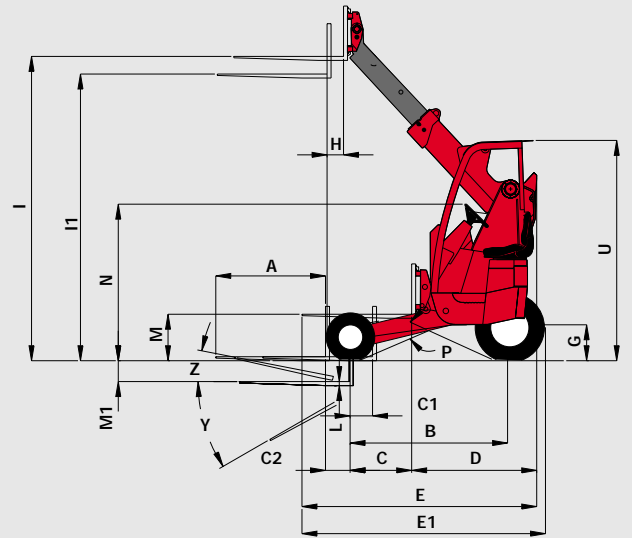
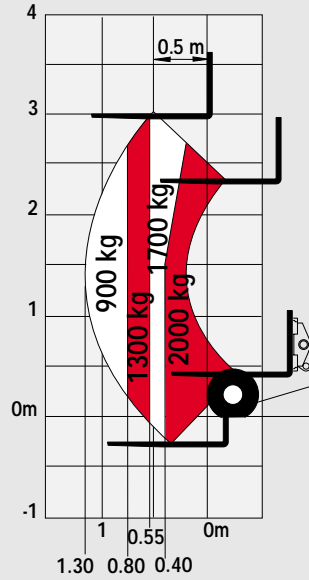


MANITRANSIT
semi industria

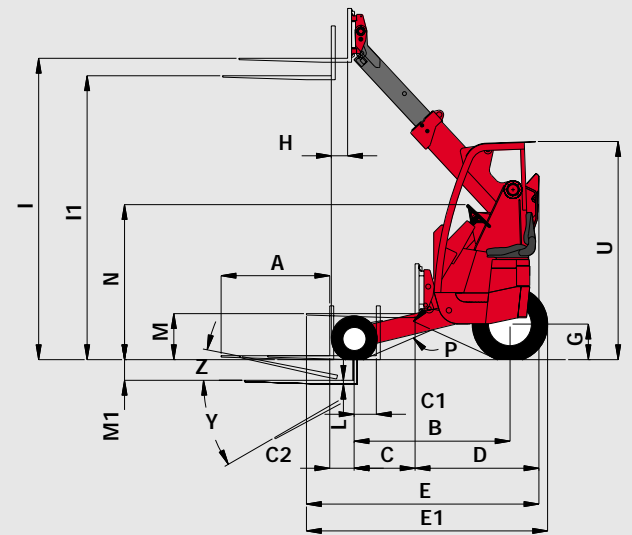
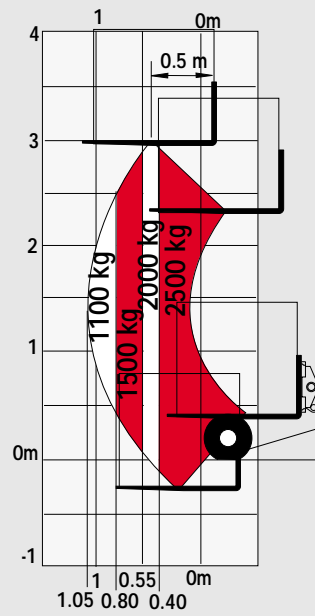


MANITRANSIT

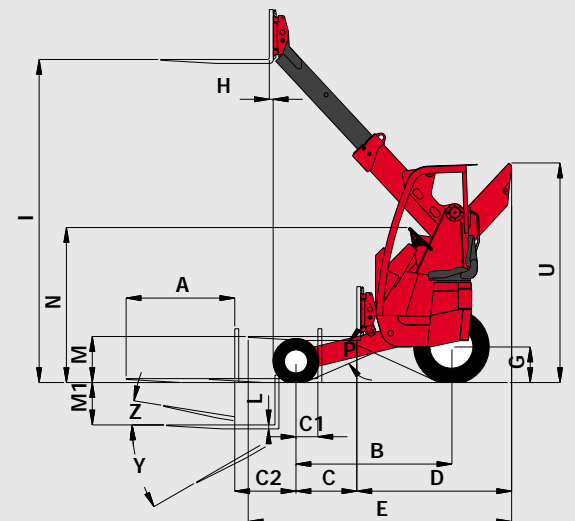
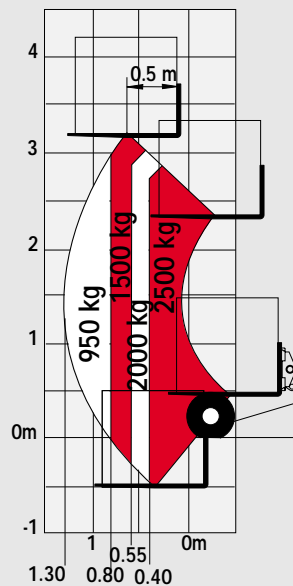
Load centre : 500 mm
Stacking height : 2.85 m



Load centre : 500 mm
Stacking height : 2.85 m

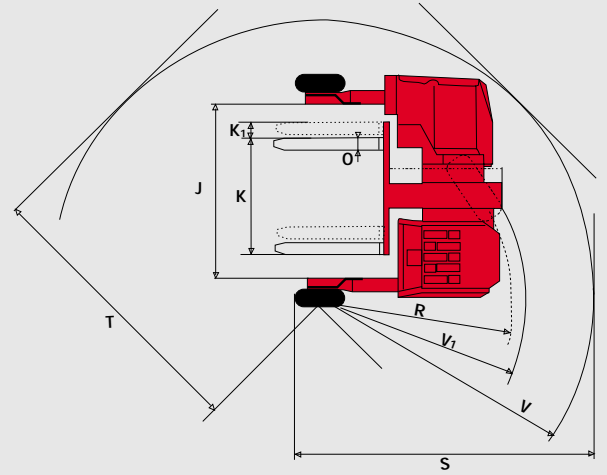
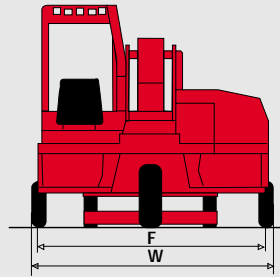


Load centre : 500 mm
Stacking height : 3.25 m



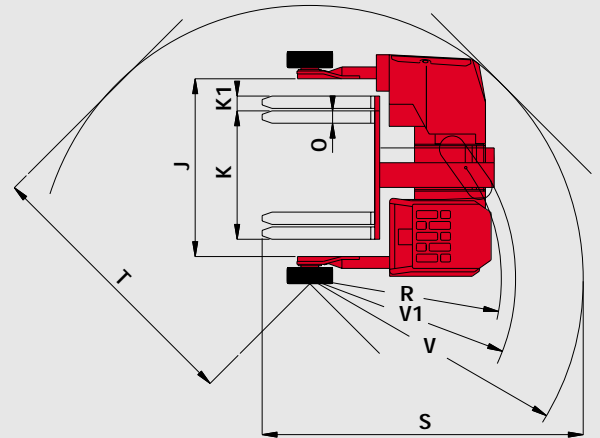
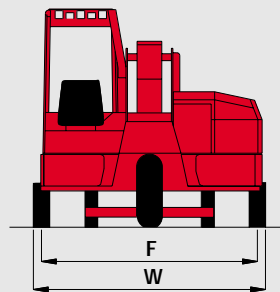
TMT 317 SI SPECIFICATIONS

TMT 317 SI			
A	1100	L	36
B	1525	M	432
C	566	M1	213
C1	172	N	1570
C2	297	O	125
D	1251	P	51°
E	2348	R	1850
E1	2390	S	3164
F	2096	T	2765
G	311	U	2162
H	170	V	2674
I	2996	V1	1980
I1	2886	W	2204
J	1561	Y	100°
K	1070	Z	7°
K1	150		



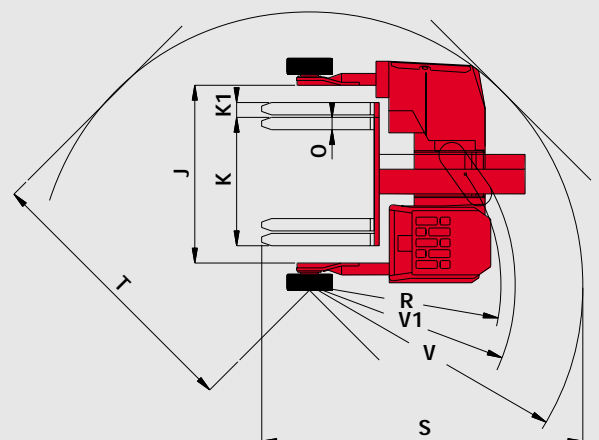
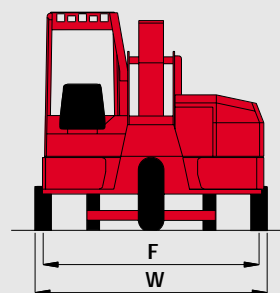
TMT 320 SI SPECIFICATIONS

TMT 320 SI			
A	1100	L	40
B	1579	M	466
C	617	M1	209
C1	225	N	1570
C2	247	O	125
D	1254	P	48°
E	2354	R	1939
E1	2442	S	3251
F	2186	T	2803
G	360	U	2200
H	165	V	2768
I	3052	V1	2083
I1	2875	W	2350
J	1800	Y	98°
K	1300	Z	9°
K1	150		











TMT 315 SI FL SPECIFICATIONS

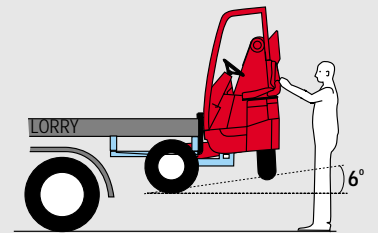
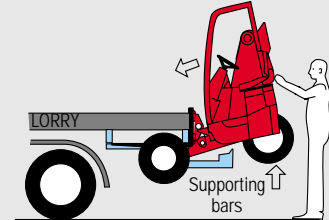
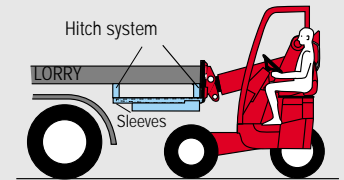
TMT 315 SI FL			
A	1100	L	40
B	1579	M	466
C	616	M1	429
C1	222	N	1570
C2	620	O	125
D	1567	P	48°
E	2667	R	1939
F	2186	S	3251
G	360	T	2803
H	39	U	2224
I	3272	V	2768
I1	-	V1	2083
J	1800	W	2350
K	1300	Y	98°
K1	150	Z	9°



UNIQUE TELESCOPIC MOUNTED FORKLIFT TRUCK (MANITOU PATENT)

QUICK HITCH SYSTEM ON TRUCK

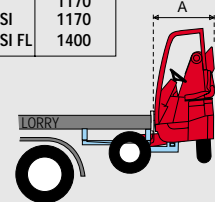
	TMT 317 SI	TMT 320 SI	TMT 315 SI FL
 Load capacity at 500 mm load centre	1700 kg	2000 kg	1500 kg
 Lift height : Stacking height Maximum front reach (wheel arms positionned underneath the vehicle)	3.00 m 2.85 m 2.00 m	3.00 m 2.87 m 2.00 m	3.25 m 3.25 m 2.30 m
 Tyres Front : Rear : Number of drive wheel :	18 x7-8 27 x 10 - 12 3	18 x7-8 10 x 16.5 8 PR 3	18 x7-8 10 x 16.5 8 PR 3
 Engine Capacity Power (DIN 70.020)	KUBOTA 3 Cyl. 1123 cm ³ 26.5 HP/19.5 kw	LISTER PETER LPWS 4 4 cylindres - 1860 cm ³ 39.7 HP / 29.2 kw	
 Hydrostatic transmission Reversing shift Differential lock Maximum travel speed		Automatic power regulation Electro-Hydraulic yes	12.5 km/h
 Hydraulic 1 variable displacement pump for transmission 1 pump gear type for hydraulic movements and steering	33 l./mn	120 l./mn 36 l./mn - 250 bars	
 Capacities Fuel tank Hydraulic oil		40 litres 35 litres	
 Weight unladen (with forks) Overall width Overall height Turning radius (outside wheels) Overall length Ground clearance 90° stacking aisle	1935 kg 2.20 m 2.216 m 2.67 m 2.39 m 0.31 m 3.16 m	2180 kg 2.35 m 2.20 m 2.76 m 2.44 m 0.36 m 3.25 m	2260 kg 2.35 m 2.22 m 2.76 m 2.66 m 0.36 m 3.25 m



REAR OVERHANG

	A
TMT 317	1170
TMT 320 SI	1170
TMT 315 SI FL	1400

mm



BREVETS - PATENTS

FR 94 10953
FR 95 00033
EP 0 701 963
US PENDING
AUSTRALIA PENDING
SOUTH AFRICA 96/5/80

INTEGRATED PATENTED SIDE SHIFT



TMT 317 SI/TMT 320 SI/TMT 315 SI FL

This publication in no way constitutes an offer and the company reserves the right to alter specification without prior notice.
The MANITOU models presented in this brochure can be supplied complete with optional equipment attachments
IMPORTANT : All regulations relating to vehicles apply to vehicles equipped with truck-mounted forklifts.



MANITOU B.F. S.A.
B.P. 249 - 44158 ANCENIS CEDEX - FRANCE
TEL : 33 2 40 09 10 11
EXPORT DEPARTMENT FAX : 33 2 40 09 10 97
www.manitou.com