

MANISCOPIC

MRT 1542

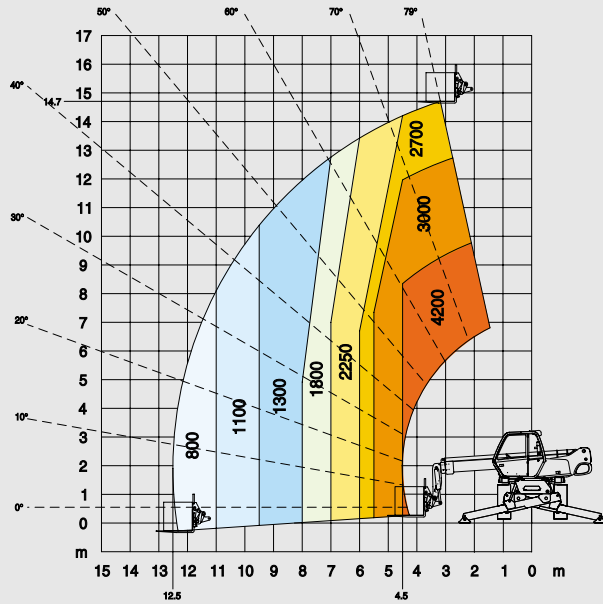
M Series



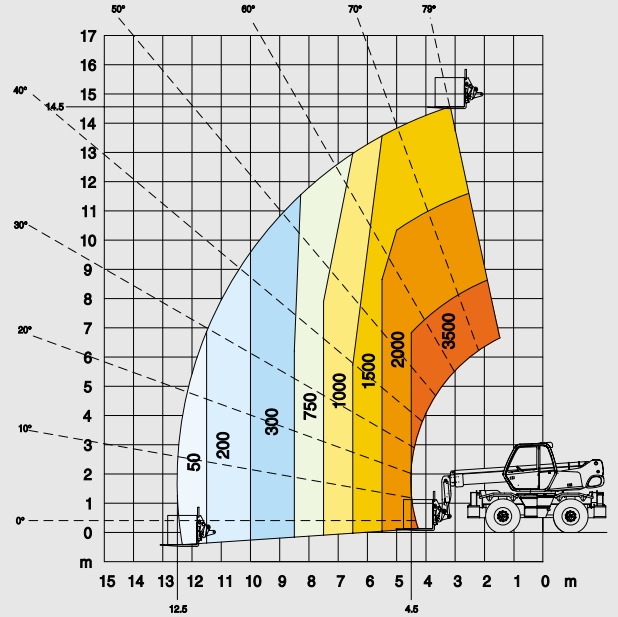
- Lift height : 14.78 m
- Max. reach : 12.50 m
- Engine : 106 HP - 78.5 kw
- 4 wheel drive - 4 wheel steer
- Hydrostatic transmission



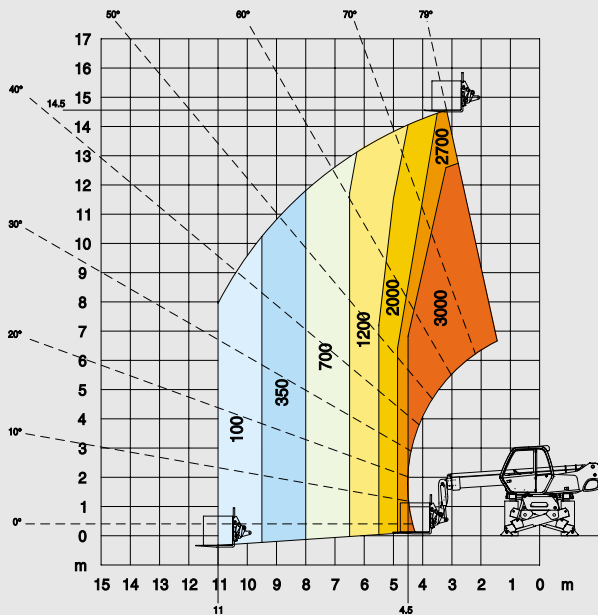
ROTATION ON STABILISERS FULLY EXTENDED WITH FORKS



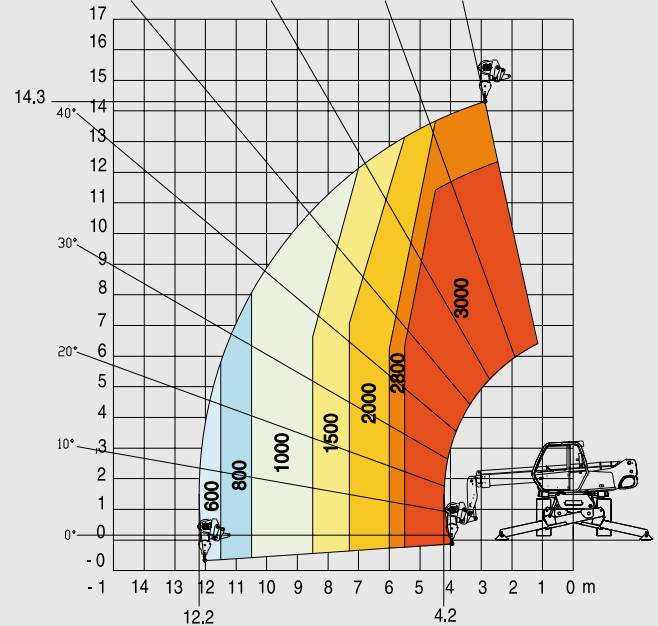
FRONTAL POSITION ON WHEELS WITH FORKS



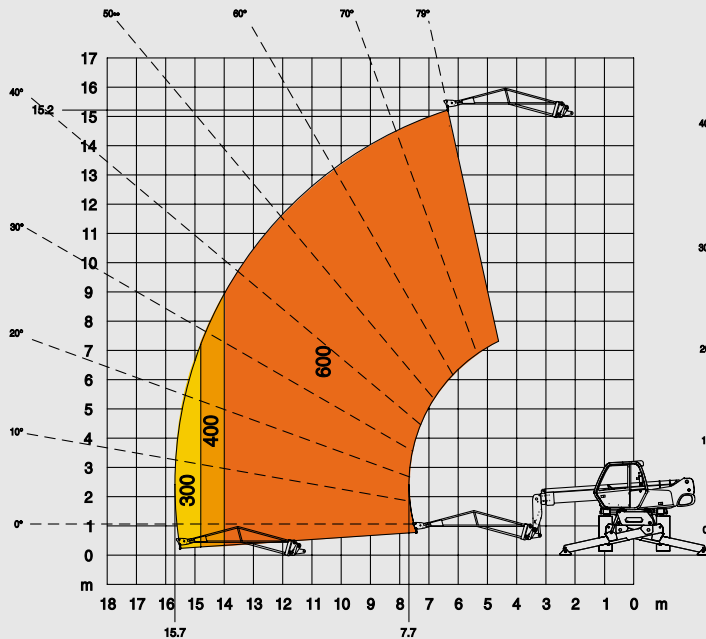
ROTATION ON STABILISERS NOT FULLY EXTENDED WITH FORKS



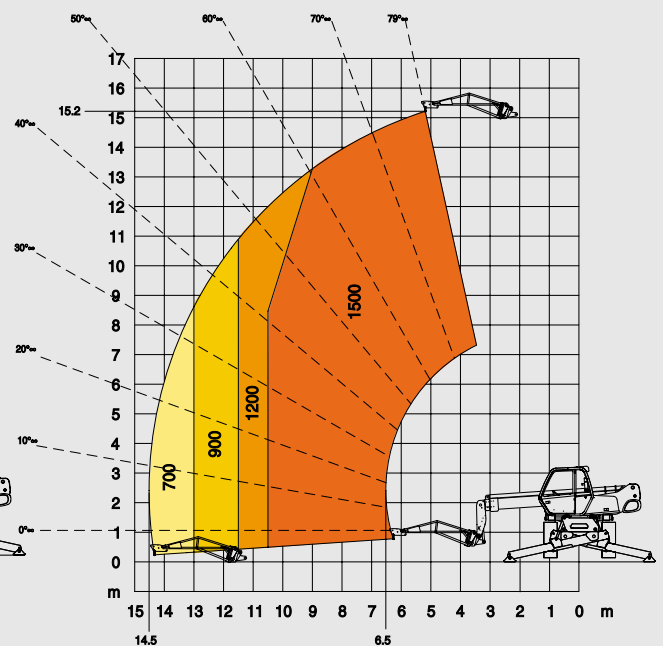
ROTATION ON STABILISERS FULLY EXTENDED WITH 3T WINCH



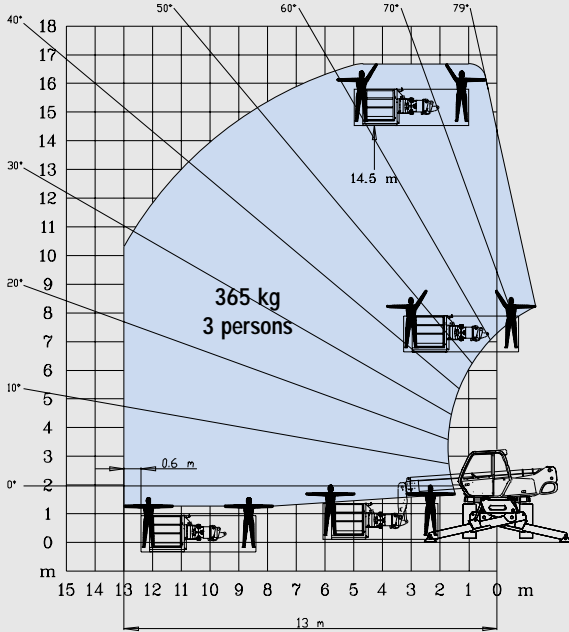
ROTATION ON STABILISERS FULLY EXTENDED WITH JIB P 600



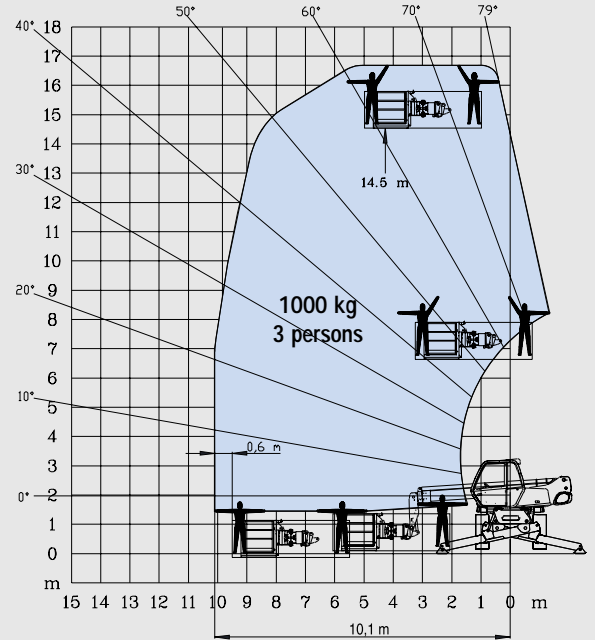
ROTATION ON STABILISERS FULLY EXTENDED WITH JIB P 1500



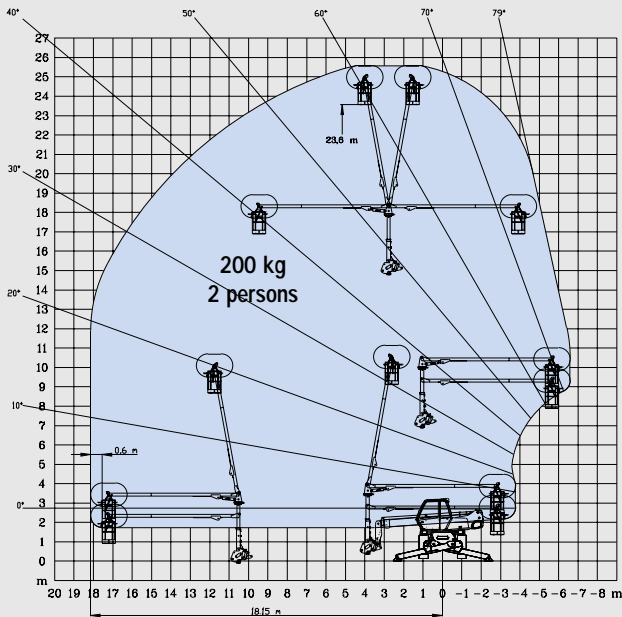
**ROTATION ON STABILISERS FULLY EXTENDED
WITH EXTENSIBLE PLATFORM 2,25/4 m**



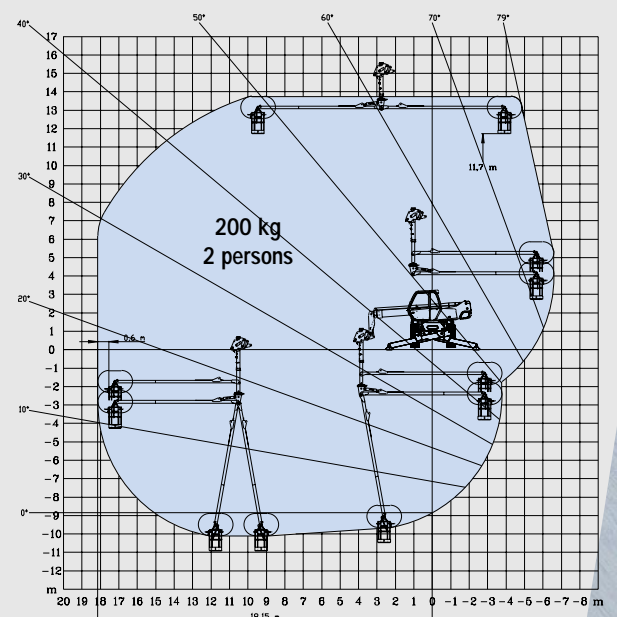
**ROTATION ON STABILISERS FULLY EXTENDED
WITH 1000 KG PLATFORM 2,25/4 m**



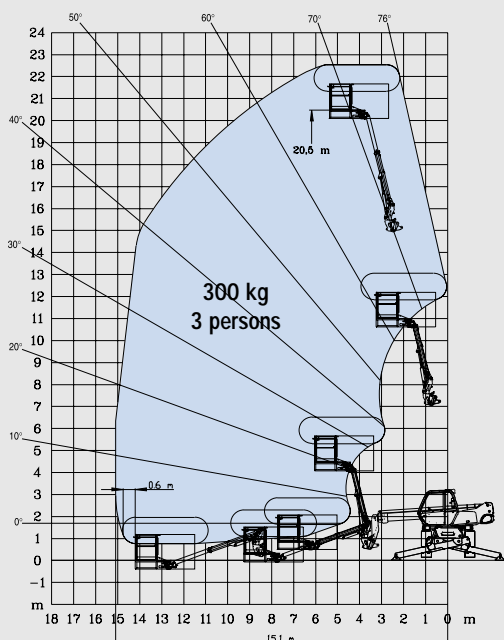
**ROTATION ON STABILISERS FULLY EXTENDED
WITH 3 D SYSTEM IN POSITIVE POSITION**



**ROTATION ON STABILISERS FULLY EXTENDED
WITH 3 D SYSTEM IN NEGATIVE POSITION**



**ROTATION ON STABILISERS FULLY EXTENDED
WITH AERIAL JIB PLATFORM**



**Equipment customised
on order**



MRT 1542 *M Series*



Lift capacity (on stabilisers).....4200 kg
at 500 mm from forks heels



Lift height :14.78 m



Tyres
18-22,5 16 PR



Forks (mm)
Length.....1200
Width x thickness.....150 X 50



Multidisc brakes : hydraulically assisted on both axles
Negative parking brake



Engine PERKINS
Type.....1004.40 Turbo
Capacity.....4 cyl. 3990 cm³
Power (ISO/TR 14396).....106 HP/78.5 kw
at 2300 rpm
Water cooling
Direct injection



Transmissionhydrostatic
With automatic power regulation (hydraulic variable
displacement pump and motor)
Reversing shift.....electromagnetic
2 speed forward and reverse
Travel speed.....25 km/h



Rear axle
Automatic rear axle locking system
over 15 ° rotation



4 stabilisers
simultaneous or individually controlled



Rotation through 400°
Turret mounted on a double slew ring



Hydraulics
2 pumps gear type.....270 bars/115 l/mn



Control : 2 electro proportional control joysticks for all
hydraulic movements



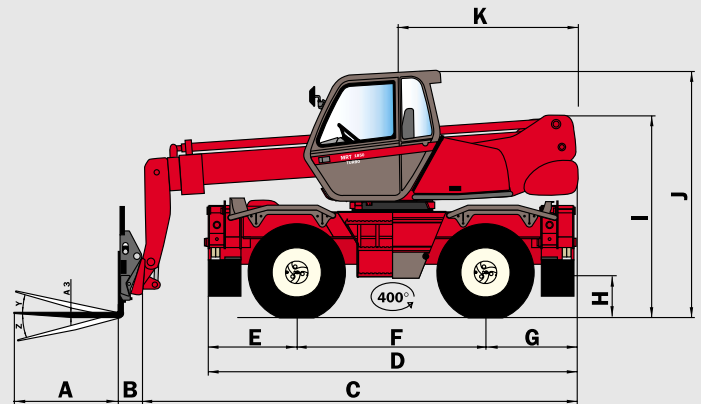
Capacities
Cooling system.....15 l.
Engine oil8,1 l.
Hydraulic oil140 l.
Fuel tank130 l.



Weight unladen (with forks)13350 kg
Overall width.....2.43 m
Overall height.....3.02 m
Overall length.....5.69 m
Ground clearance.....0.46 m
Drawbar pull.....10800 daN

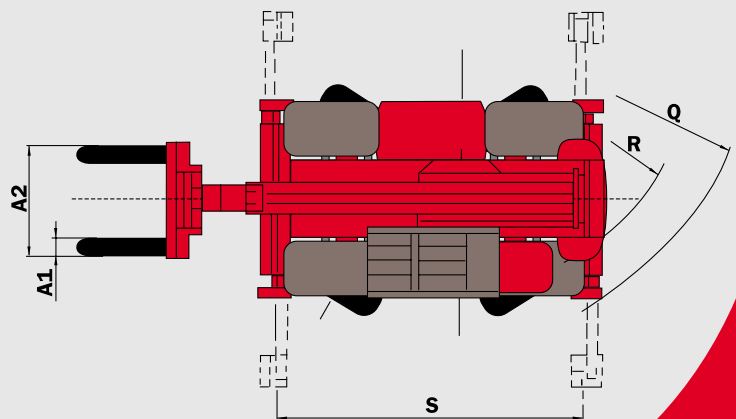
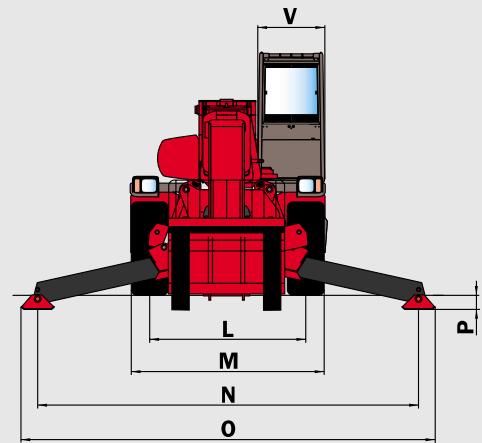


Standard load moment indicator
(mobile crane standards)



A	1200
A1	150
A2	1320
A3	50
B	290
C	5400
D	4630
E	1155
F	2320
G	1155
H	460
I	2410
J	3025
K	2040
L	1930
M	2425
N	4100
O	4500
P	200
Q	4000
R	3410
S	4100
V	950
Y	12°
Z	105°

mm



This publication in no way constitutes an offer and the company reserves the right to alter specification without prior notice.
The MANITOU models presented in this brochure can be supplied complete with optional equipment attachments.

