

MANISCOPIC

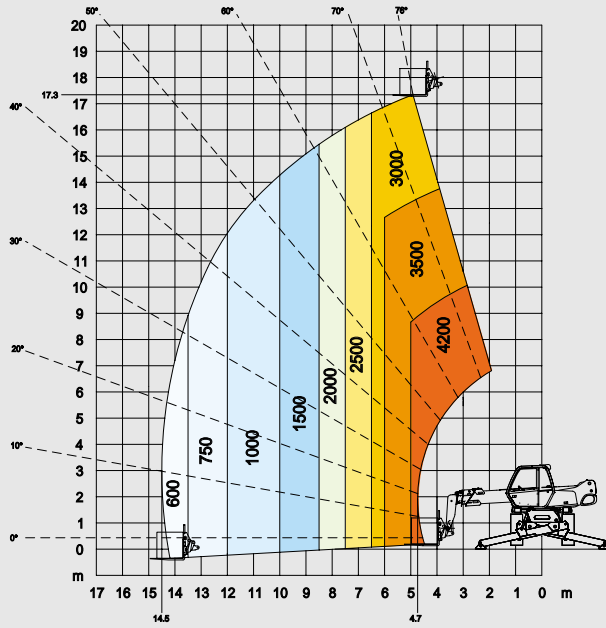
MRT 1742

M Series

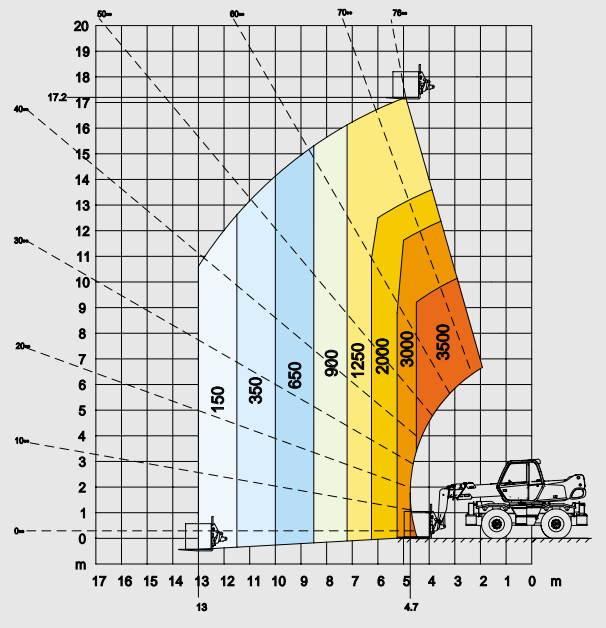


- Lift height : 17.30 m
- Max. reach : 14.50 m
- Engine : 106 HP - 78.5 kw
- 4 wheel drive - 4 wheel steer
- Hydrostatic transmission

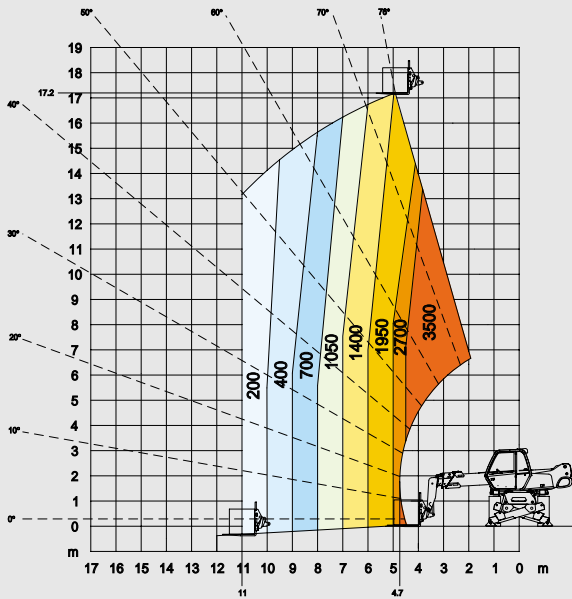
ROTATION ON STABILISERS FULLY EXTENDED WITH FORKS



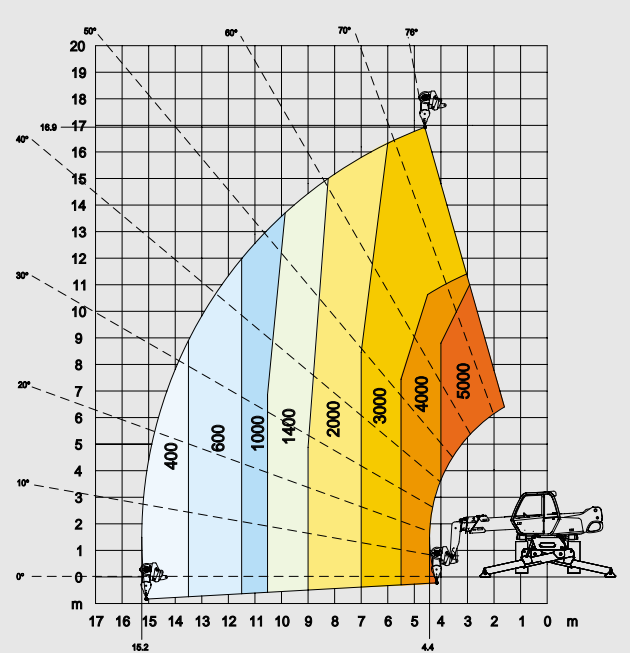
FRONTAL POSITION ON WHEELS WITH FORKS



ROTATION ON STABILISERS NOT FULLY EXTENDED WITH FORKS



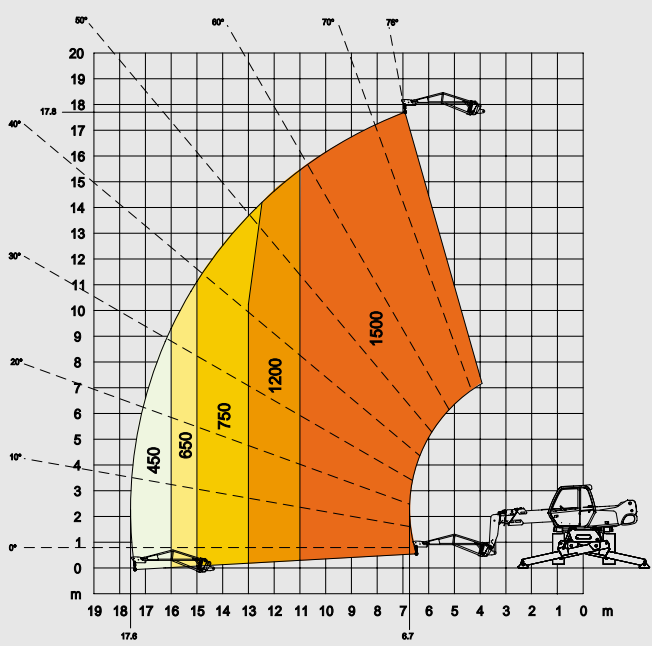
ROTATION ON STABILISERS FULLY EXTENDED WITH 5T WINCH



ROTATION ON STABILISERS FULLY EXTENDED WITH JIB P 600

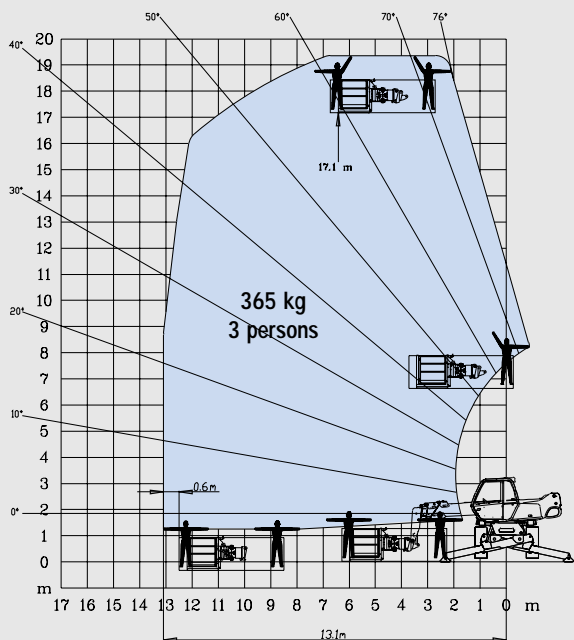


ROTATION ON STABILISERS FULLY EXTENDED WITH JIB P 1500

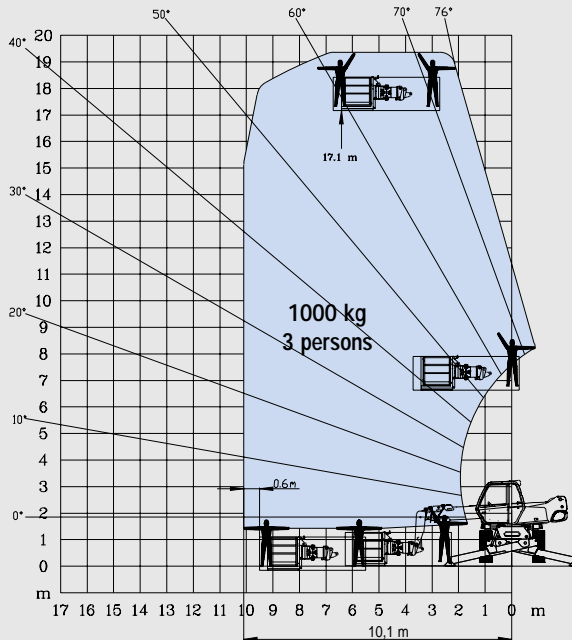


MRT 1742 M Series

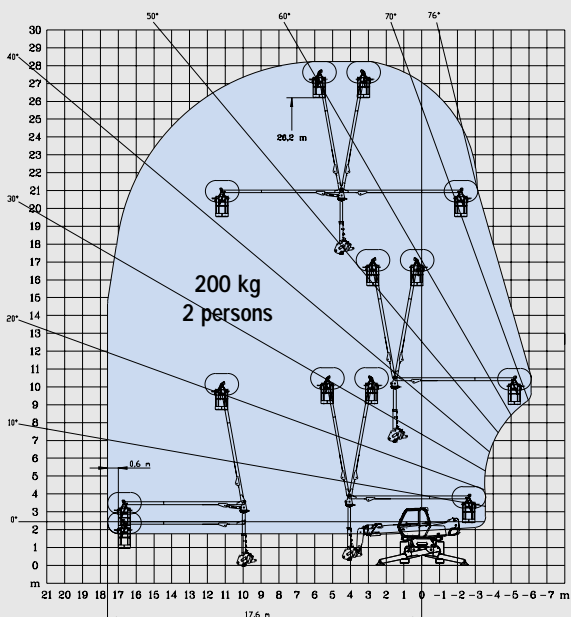
ROTATION ON STABILISERS FULLY EXTENDED WITH EXTENSIBLE PLATFORM 2,25/4 m



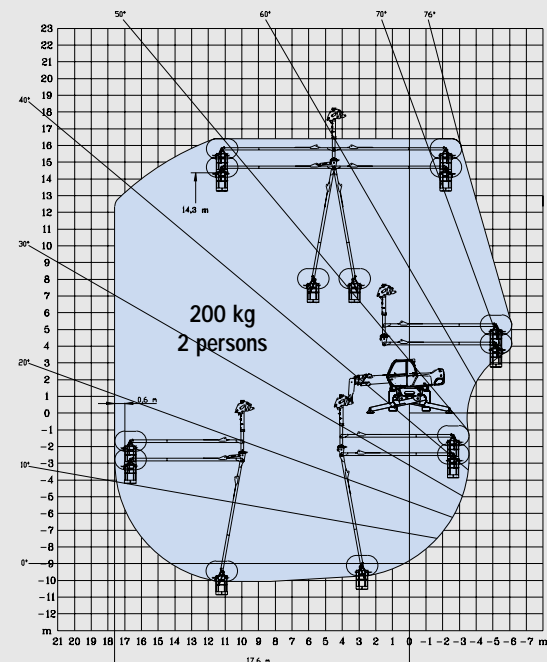
ROTATION ON STABILISERS FULLY EXTENDED WITH 1000 KG PLATFORM 2,25/4 m



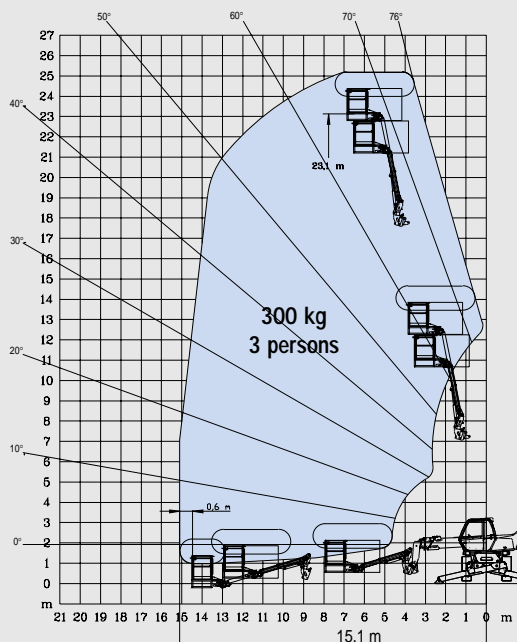
ROTATION ON STABILISERS FULLY EXTENDED WITH 3 D SYSTEM IN POSITIVE POSITION



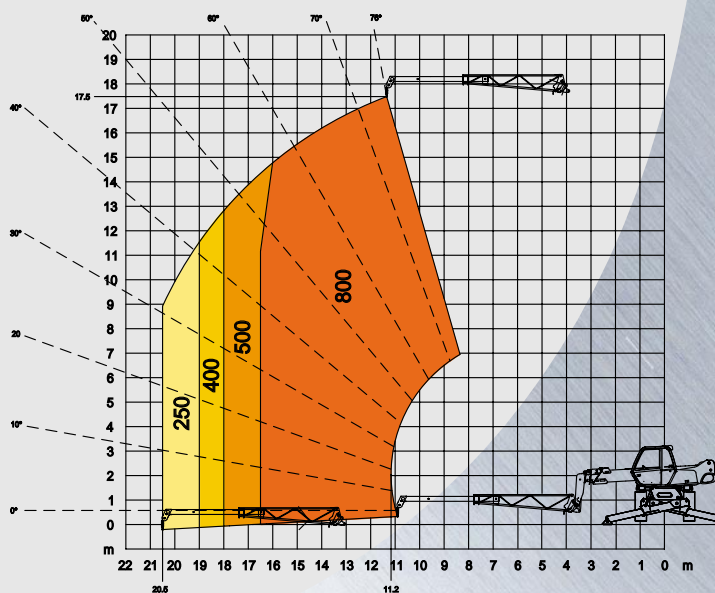
ROTATION ON STABILISERS FULLY EXTENDED WITH 3 D SYSTEM IN NEGATIVE POSITION



ROTATION ON STABILISERS FULLY EXTENDED WITH AERIAL JIB PLATFORM



ROTATION ON STABILISERS FULLY EXTENDED WITH CRANE JIB



MRT 1742 *M Series*



Lift capacity (on stabilisers)4200 kg
at 500 mm from forks heels



Lift height :17.30 m



Tyres
18 - 22,5 16 PR



Forks (mm)
Length1200
Width x thickness150 X 50



Multidisc brakes : hydraulically assisted on both axles
Negative parking brake



Engine PERKINS
Type.....1004.40 Turbo
Capacity4 cyl. 3990 cm³
Power (ISO/TR 14396).....106 HP/78.5 kw
at 2300 rpm
Water cooling
Direct injection



Transmissionhydrostatic
With automatic power regulation (hydraulic variable
displacement pump and motor)
Reversing shiftelectromagnetic
2 speed forward and reverse
Travel speed.....25 km/h



Rear axle
Automatic rear axle locking system
over 15 ° rotation



4 stabilisers
simultaneous or individually controlled



Rotation through 400°
Turret mounted on a double slew ring



Hydraulics
2 pumps gear type270 bars/115 l/mn



Control : 2 electro proportional control joysticks for all
hydraulic movements



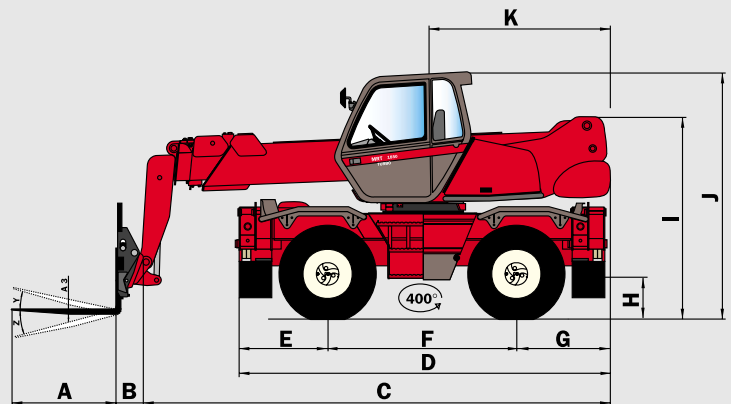
Capacities
Cooling system.....15 l.
Engine oil8.1 l.
Hydraulic oil140 l.
Fuel tank130 l.



Weight unladen (with forks)14600 kg
Overall width2.43 m
Overall height3.02 m
Overall length6.07 m
Ground clearance0.46 m
Drawbar pull10800 daN

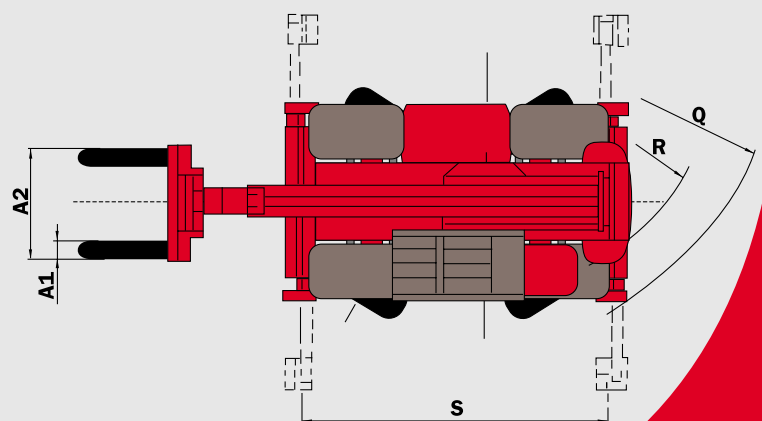
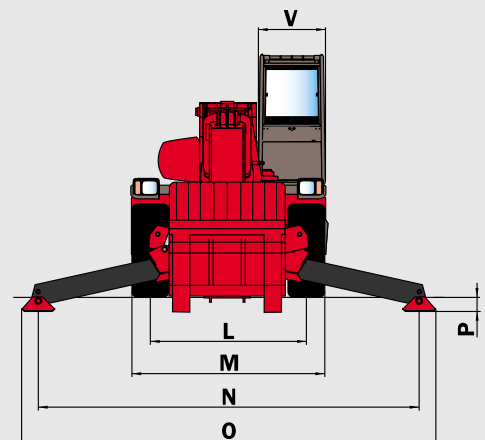


Standard load moment indicator
(mobile crane standards)



A	1200
A1	150
A2	1320
A3	50
B	290
C	5785
D	4630
E	1155
F	2320
G	1155
H	460
I	2410
J	3025
K	2040
L	1930
M	2425
N	4100
O	4500
P	200
Q	4000
R	3410
S	4100
V	950
Y	12°
Z	105°

mm



Les spécifications portées n'engagent pas le constructeur et peuvent être modifiées sans préavis
Les Manitou présentés dans cette brochure peuvent comporter des équipements optionnels.



309/09/2002



MANITOU B.F. S.A.
B.P.249 - 44158 ANCENIS CEDEX - FRANCE
TEL : 33 2 40 09 10 11
EXPORT DEPARTMENT FAX : 33 2 40 09 10 97
www.manitou.com