

MANISCOPIC

MT 1030 S



- Capacity : 3000 kg
- Lift height : 9.98 m
- Compact stabilizers
- Load Place System (LPS)
- Torque convertor transmission

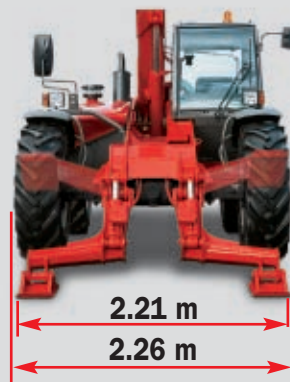
Exceptional lifting performances...

...without compromising compactness

To match daily handling requirements, the MT 1030 S offers 2 m forward reach at maximum height and perfect stability with a 1.2 ton load at 6 m in front of the wheels.



Overall length up to carriage under **5 m** and short rear overhang offer all the compactness and maneuverability required in confined sites
Turning radius of **3.75 m** for easy maneuvering.

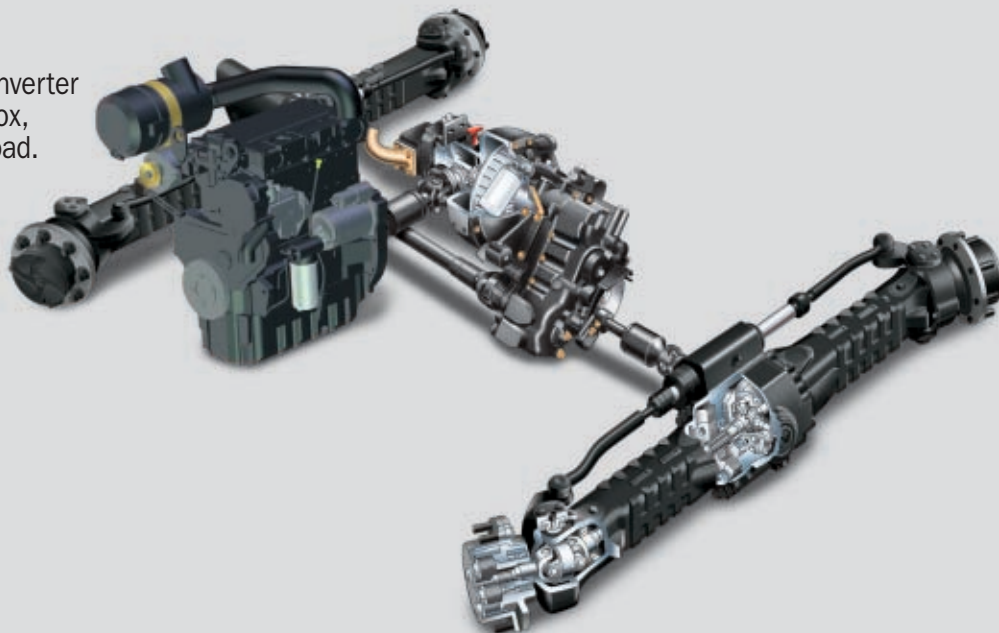


Proportional and independent stabilizers lowering on a 2.21 m width. Ideal in restricted spaces with minimum damage to the surface

All the power required for loading

80 HP Perkins Engine and torque converter transmission driving a 4 ratio gear box, perfectly suited for travelling on the road.
7350 daN drawbar pull enabling fast achievement of any loading task.

Hydraulic Pump operating at **250 bars** and supplying a **105 l/mn** flow
Simultaneity of hydraulic functions and **5350 daN** tear out force



Efficient on site

Load Place System (LPS)

Two proportional and simultaneous hydraulic functions in one hand

Dual lever system fitted directly on valve bank
Transmission cut off switch allocating all the engine power to hydraulic performances



PLACING : Lift/Lower + Tel Out/Tel In



LOADING : Lift/Lower + Crowd/Dump



Total safety

As well as exceptional performances, the MT 1030 S operates in total safety whatever the environment or the task to undertake.



Brakes on both axles



Progressive Safe Load Indicator

* Option : Automatic cut off of endangering movements



MT 1030 S



Lifting capacity3000 kg
 at 500 mm from forks heels.
 Tipping load at maximum reach.....1160 kg
 Tear at force with toothed
 digging bucket (Iso 8313 - 1986).....5330 daN



Lifting height9.98 m
Times : Unladen/loaded (in s)
 Lifting.....6.7/9
 Lowering.....5.2/5.4
 Simultaneous extension 1st and 2nd booms.....13.8/14.2
 Simultaneous retraction 1st and 2nd booms8.6/7.3
 Time unladen (in s)
 Crowding.....3
 Dumping2.5



Tyres
 15.5/80 - 24 12 PR



Forks (mm)
 Length1200
 Width x thickness125 X 45
 Maximum distance between forks1040
 Carriage rotation126°



Hydraulically operated brakes
 with oil-immersed mulddiscs on both axles



PERKINS Engine
 Type1104C-44
 Capacity4 cyl. 4400 cm³
 Power (ISO 14396) :82 HP/61.5 kw
 Maximum torque :302 Nm at 1400 rpm
 Direct injection
 Water cooling



TransmissionTorque Converter
 Electro - Hydraulic reversing shift
 4 gears forward and reverse
 Maximum travel speed25 km/h



Hydraulics
 Lifting/tilting pump
 gear type :250 bars /105 l/mn
 Flow divider with priority to steering and brakes.

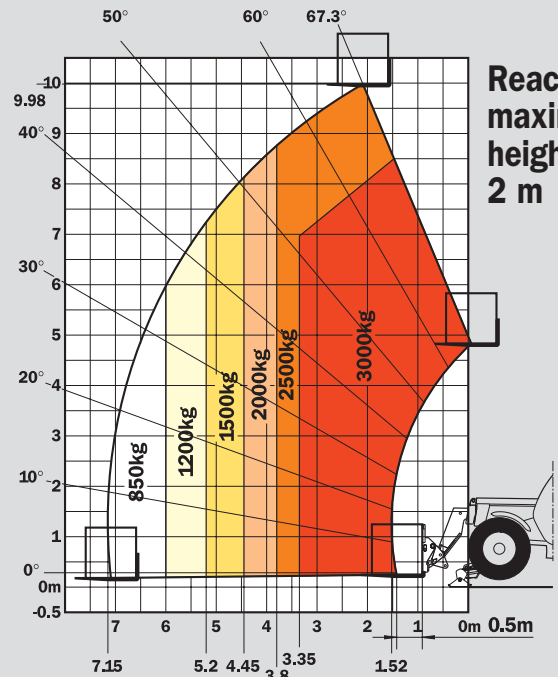


Capacities
 Cooling system24.5 l.
 Engine oil10.5 l.
 Hydraulic oil125 l.
 Transmission oil15.5 l.
 Fuel tank120 l.

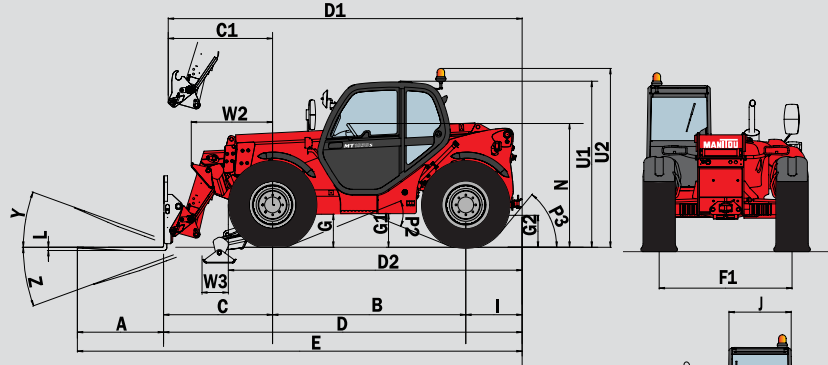


Weight unladen (with forks)7470 kg
Overall width2.26 m
Overall height2.30 m
Turning radius (outside wheels)3.75 m
Length up to carriage4.98 m
Ground clearance0.44 m
Drawbar pull7350 daN

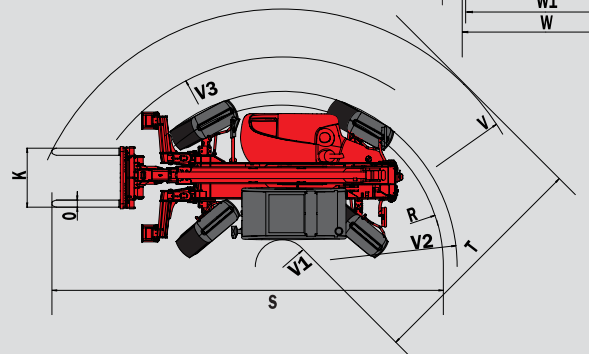
Under Norme
 EN 1459
 annexe B



Reach at maximum height : 2 m



	mm
A	1200
B	2690
C	1513
C1	1450
D	4988
D1	4935
D2	4070
E	6198
F	1846
G	460
G1	440
G2	445
G3	220
I	795
J	865
K	1040
L	45
N	1690
O	125
P2	44°
P3	53°
R	3545
S	7808
T	3670
U1	2300
U2	2550
V	4950
V1	1280
V2	3750
V3	4200
W	2261
W1	2210
W2	1132
W3	340
Y	12°
Z	114°



Standard :

- Beacon
- Floating forks carriage
- Attachment hydraulic line
- Reverse alarm and lights

Options :

- Wide range of attachments (buckets, jibs, made to measure attachments)
- Air conditioning
- Work lights
- ...



This publication in no way constitutes an offer and the company reserves the right to alter specification without prior notice. The MANITOU models presented in this brochure can be supplied complete with optional equipment attachments



MANITOU B.F. S.A.
 B.P249 - 44158 ANCENIS CEDEX - FRANCE
 TEL : 33 2 40 09 10 11
 EXPORT DEPARTMENT FAX : 33 2 40 09 10 97
 www.manitou.com