


MANISCOPIC


MT 523


- Maximum lifting height : 4.92 m
- Capacity : 2300 kg
- Maximum forward reach : 2.83 m
- Hydrostatic transmission



MT 523


 **Lifting capacity**2300 kg
at 500 mm from forks heels.
Tipping load
at maximum reach :1420 kg
Tear out force with bucket
to ISO 83134320 daN


 **Lifting height** :4.92 m
Times : unladen/loaded (in s)
Lifting.....6.3/7.1
Lowering.....4.2/4.2
Boom extension.....4.7/4.8
Boom retraction3/2.5
Time unladen (in s)
Crowd2.8
Dump.....2.4


 **Tyres**
12.0 - 18 T86 12 PR
Option : 10.5 - 18 TG 42 10 PR

 **Forks** (mm)
Length1200
Width x thickness.....125 x 40


 **Oil bath multidisc brakes on front axle**

 **Perkins engine**
Type903.27 3/2700 cm³
Power (ISO/TR 14396).....52 HP/38.5 kw
Maximum torque192 Nm at 1200 tr/mn
Direct injection
Water cooling

 **Transmission**hydrostatic
Electro - hydraulic reversing shift
One speed forward and reverse

 **Hydraulics**
Lifting/tilting pump :
gear type85 l./mn - 230 bars
Flow divider with priority to steering

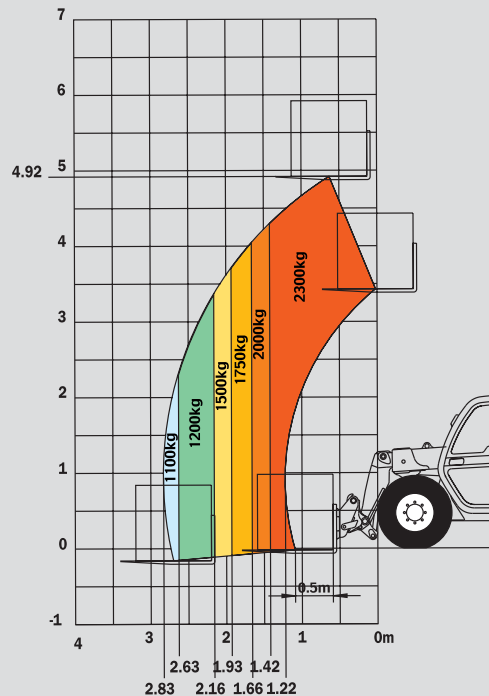
 **Capacities**
Cooling system14.5 l.
Transmission oil.....102.5 l.
Engine oil6.1 l.
Fuel tank.....104 l.

 **Weight unladen** (with forks)5010 kg
Overall width1.80 m
Overall height1.98* or 2.01 m
Turning radius (outside wheels)3.10 m
Length up to carriage4.20 m
Ground clearance0.30 m
Drawbar pull3000 daN

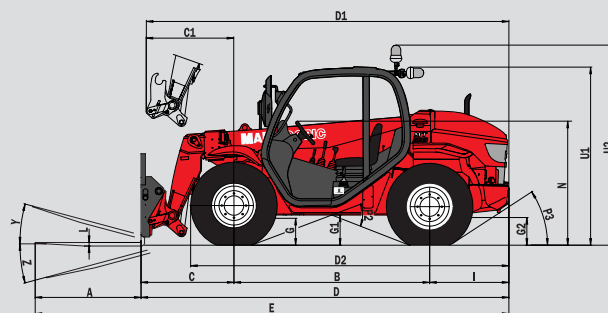
* Tyres : 10.5 - 18

This publication in no way constitutes an offer and the company reserves the right to alter specification without prior notice. Model illustrated may have optional equipment which is available at additional cost.

Reach at maximum height : 0,64 m



Under EN 1459 annexe B



MT 523	
Atmo	
A	1200
B	2220
C	1076
C1	1071
D	4201
D1	4202
D2	3565
E	5401
F	1500
F1	1500
G	290
G1	335
G2	305
I	905
J	865
K	1040
L	40
N	1390
O	125
P2	39°
P3	31°
R	2950
S	6490
T	3015
U1	1990
U2	2280
V	4120
V1	1105
V2	3105
W	1815
Y	12°
Z	120.2°

(mm)

