

MANISCOPIC

MLT 731

- Maximum lifting height : 6,90 m
- Capacity : 3100 kg
- Maximum forward reach : 4,16 m
- Torque convertor



MLT 731 TURBO - FFGR 30 MT 2100



MLT 731

Lifting capacity3100 kg
 at 500 mm from forks heels.
 Tipping load
 at maximum reach :1420 kg
 Tear out force with toothed digging bucket
 to ISO 8313-1986 with tilting ram.....5650 daN

Lifting height :6.90 m
Times : unladen/loaded (in s)
 Lifting.....6.7/7.3
 Lowering.....5/4.7
 Boom extension.....6.3/6.8
 Boom retraction.....3.3/3
 Time unladen (in s)
 Crowd.....3
 Dump.....2.6

Tyres
 17,5 LR 24

Forks (mm)
 Length1200
 Width x thickness125 X 45
 Maximum distance between forks1260
 Carriage rotation146°

Multidisc brakes - Hydraulically assisted on 4 wheels

PERKINS Engine
 Turbo : 1104 C - 44 T4 cyl. - 4400 cm³
 Power at 2200 rpm
 (ISO/TR 14396) Turbo101 HP/74.5 kw
 Maximum torque : Turbo.....412 Nm at 1400 r.p.m.
 Direct Injection
 Water cooling

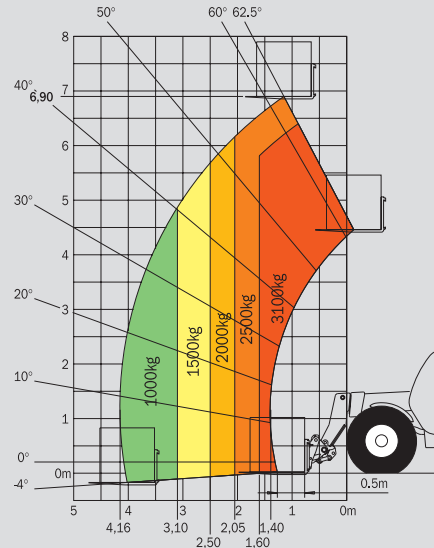
TransmissionTorque Convertor
 Electro - Hydraulic reversing shift
 4 speeds forward and reverse
 Max travel speed :till 30 km/h

Hydraulics
Turbo :105 l./mn - 250 bars
 gear type
Turbo LSU :110 l./mn - 270 bars
 Load Sensing pump
 Electro proportional command monolever
 Flow divider with priority to device driving and braking

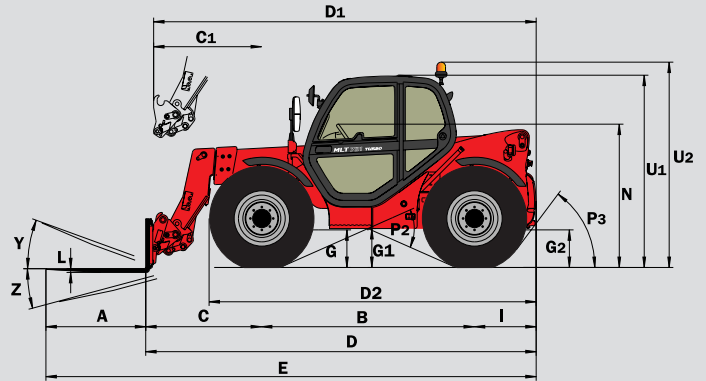
Capacities
 Hydraulic oil125 l.
 Fuel tank.....120 l.

Weight unladen (with forks)6975 kg
Overall width2.30 m
Overall height2.30 m
Turning radius (outside wheels)3.70 m
Overall length4.87 m
Ground clearance0.44 m
Drawbar pull :8600 daN

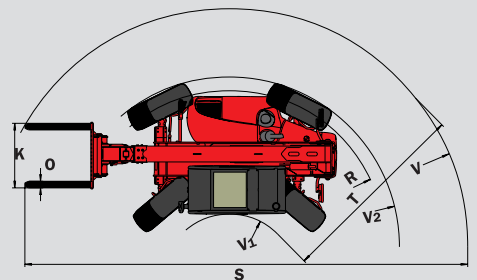
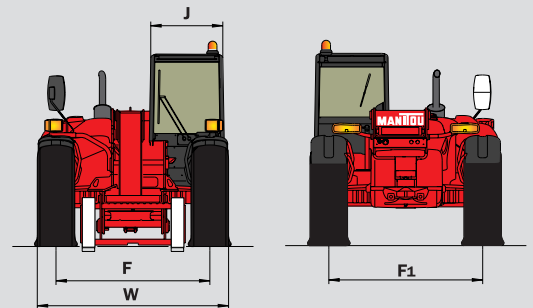
Reach at maximum height : 1.15 m



Under
 EN 1459
 annexe B



	MLT 731 T	MLT 731 T LSU
A	1200	
B	2560	
C	1441	
D	1537	
D1	4878	
D2	4974	
E	4037	
F	6078	
F1	1870	
G	1870	
G1	455	
G2	440	
I	440	
J	877	
K	865	
L	1260	
N	45	
O	1720	
P2	125	
P3	47.5°	
R	53°	
S	3475	
T	7624	
U1	3615	
U2	2300	
V	2550	
V1	4865	
V2	1250	
W	3703	
Y	2325	
Z	12.3°	
	133.7°	



This publication in no way constitutes an offer and the company reserves the right to alter specification without prior notice. The MANITOU models presented in this brochure can be supplied complete with optional equipment attachments.



MANITOU B.F. S.A.
 B.P.249 - 44158 ANCENIS CEDEX - FRANCE
 TEL : 33 2 40 09 10 11
 EXPORT DEPARTMENT FAX : 33 2 40 09 10 97
 www.manitou.com