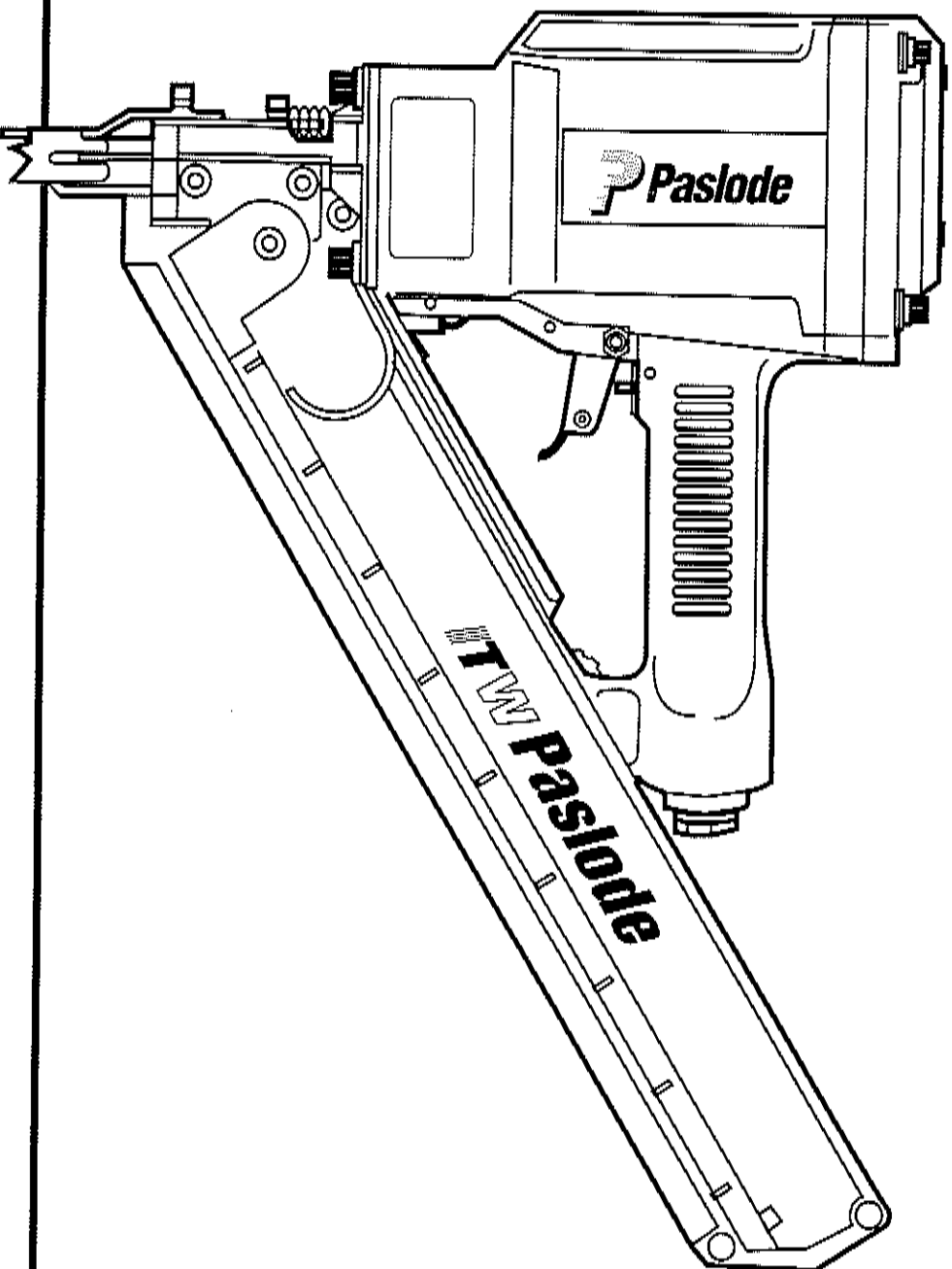


Paslode

MODEL 5325/80 SQ STRIP NAILER
MODEL 5350/100 SQ STRIP NAILER
MODEL 5350/100 SPQ STRIP NAILER



TOOL SCHEMATIC AND PARTS

PARTS LEGEND

5325/80 SQ, 404263
5350/100 SQ, 402050
5350/100 SPQ, 406040

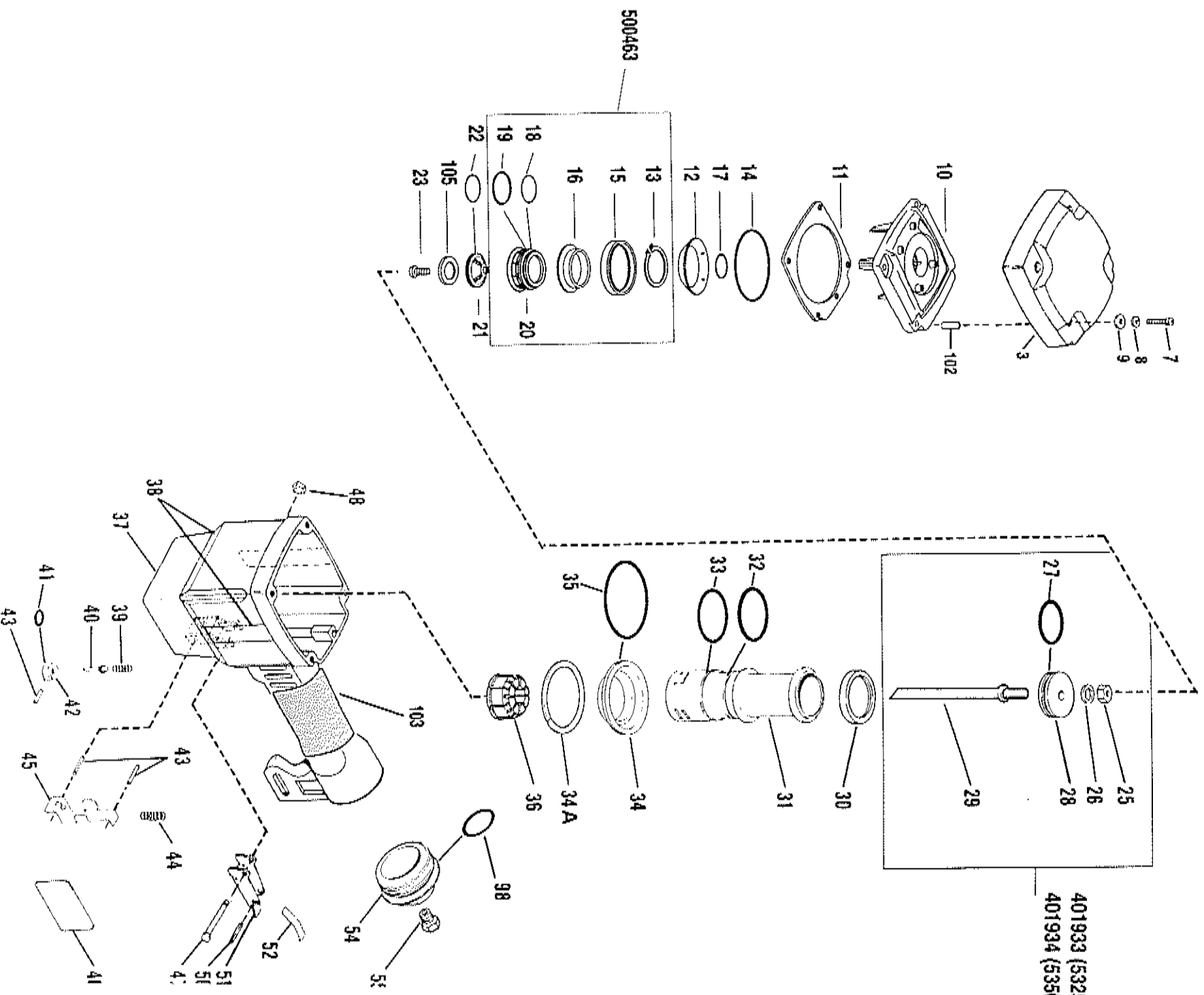
▲ 1	013625	7	Socket Head Capscrew, #8-32 x 1/2"	57	401996	1	Spring, Knob
2	401955	6	Flat Washer, #8	58	401993	1	Knob
3	402448	1	Diffuser Cap	59	401998	1	Mounting Insert
7	091873	4	Socket Head Capscrew, 1/4-20 x 2" (5325)	*60	402008	1	Gasket, Nose Flange
	404367	4	Socket Head Capscrew, 1/4-20 x 3-1/4" (5350)	61	402005	1	Flange, Nose
				62	006787	2	Roll Pin, 3/16" Dia. x 1" Lg.
				62A	401697	2	Roll Pin
8	002187	4	Lock Washer, 1/4"	63	401988	1	Spring, Work Contacting Element
9	091447	4	Flat Washer	64	402014	1	Lower W.CE Bracket
→ 10	500452	1	Cap (5325)	65	402094	2	Flat Washer, #10
	500462	1	Cap (5350)	66	004238	1	Lock Washer, #10
*11	401983	1	Gasket	▲ 67	009037	2	Socket Head Capscrew, 10/32 x 1/2"
12	500407	1	Spring	68	402009	1	Working Contacting Element (5325)
→ 13	406041	1	Retaining Ring	401990	1	Work Contacting Element (5350)	
→ *14	500461	1	*O' Ring, Upper Valve Piston	69	402095	1	Nut Bar
→ 15	500455	1	Upper Valve Piston	70	401906	1	Nose (5325)
16	401946	1	Seal, Main Valve	401907	1	Nose (5350)	
→ *17	092042	1	*O' Ring, Lower Valve Piston	71	009016	4	Socket Head Capscrew, 5/16-18 x 1"
*18	091208	1	*O' Ring, Lower Valve Piston	72	095417	4	Lock Washer, 5/16"
→ *19	401950	1	*O' Ring, Lower Valve Piston	73	002442	6	Lock Washer, #8
→ 20	500456	1	Lower Valve Piston	74	401979	1	Cover, Magazine
→ 21	500454	1	Post	75	401978	1	Spring, Upper Work Contacting Element
22	095432	1	*O' Ring, Post	76	401977	1	Upper Work Contacting Element
▲ 23	402906	1	Button Head Capscrew, #10-32 x 5/8" Nut	77	402010	2	Bushing
25	091861	1	Nut	78	091363	3	Flexloc Thin Nut, #8-32
26	092116	1	Washer	79	403581	1	Magazine, right and left, (5325) Includes Part No. 401980
*27	092971	1	*O' Ring, Piston		403733		Magazine, right and left (5350)
28	401956	1	Piston	81	401919	1	Shear Block (Including Pin), right (5325)
*29	401904	1	Driver Blade (5325)		401921	1	Shear Block (Including Pin), right (5350)
401905	1	Driver Blade (5350)					Pin, Shear Block
30	402011	1	Seal, Sleeve	82	401975	2	Pin, Shear Block
31	401900	1	Sleeve (5325)	83	401966	1	Follower Assembly
	401901	1	Sleeve (5350)	84	401980	1	Boil, Knob
*32	092762	1	*O' Ring, Sleeve	85	401918	1	Shear Block (Including Pin), Left (5325)
→ *33	500367	1	*O' Ring, Sleeve (5350/100 SQ, 5350/100 SPQ))		404661	1	Shear Block (Including Pin), Left (5350)
34	401984	1	Flange	86	401965	1	Drum, Negator
34A	402993	1	Shim	*87	401964	1	Spring, Negator
*35	401985	1	*O' Ring, Flange	88	403042	1	Cover, Spring
*36	401986	1	Bumper (5325/80 SQ, 5350/100 SQ)	89	008731	1	Socket Head Capscrew, #10-24 x 3/4"
	404890	1	Bumper (5350/100 SPQ)	90	404045	1	Socket Head Capscrew, #8-32 x 1-1/8"
37	401936	1	Housing	91	403738	1	Pin, Magazine
38	405117	2	Logo, Housing	92	403739	1	Spring, Magazine Pin
39	097748	1	Spring, Valve Pin	93	023766	1	Retainer Ring
40	097746	1	Valve Pin	94	090971	1	Socket Head Capscrew, #8-32 x 7/8"
*41	092174	1	*O' Ring, Valve Body	95	401961	1	Channel
42	401958	1	Valve Body	97	403740	1	Spacer, Magazine
43	026133	3	Roll Pin, 1/8" Dia. x 1" Lg.	98	091591	1	*O' Ring, End Plug
44	401992	1	Spring, Intermediate Work Contacting Element	99	401974	4	Screw with Plastic
45	401991	1	Intermediate Work Contacting Element	100	404046	1	Wear Plate Kit
46	405553	1	Name Plate	101	016343	1	Socket Head Capscrew, #8-32 x 1-1/4"
47	402079	1	Trigger Pin	102	402447	4	Spacer, Diffuser
48	404325	1	Stop Nut #8-32	103	500488	1	Grp, Handle
50	005849	1	Roll Pin, 1/8" Dia. x 5/8" Lg.	104	405528	1	Fastener Label (5325)
51	405144	1	Trigger	405532	1	Fastener Label (5350)	
52	405147	1	Lever	→ 105	500453	1	Bumper, Post
54	401940	1	End Plug				
55	091622	1	Reducing Pipe Bushing				
56	401997	1	Corp. Knob				

• Denotes normal wear items

▲ Apply locrite 242 (Blue) Part No. 093500

→ Denotes new change

401933 (5325)
401934 (535C)



500463

PARTS OFFERED AS ASSEMBLIES

→ 500466 Cap Assembly (5325)

→ 500467 Cap Assembly (5350)

Includes	
10	500452 1 Cap (5300/75 CC)
	500462 1 Cap (5350/90 CC)
12	500407 1 Conical Spring
13	406041 1 Retaining Ring
14	500461 1 *O* Ring, Upper Valve Piston
15	500455 1 Upper Valve Piston
16	401946 1 Seal, Main Valve
17	092042 1 *O* Ring, Lower Valve Piston
18	091208 1 *O* Ring, Lower Valve Piston
19	401950 1 *O* Ring, Lower Valve Piston
20	500456 1 Lower Valve Piston
21	500454 1 Post
22	095432 2 *O* Ring
23	402906 1 Machine Screw, #10-32, x 5/8"
105	500453 1 Bumper, Post

→ 500463 Main Valve Assembly (All Models)

Includes	
13	406041 1 Retaining Ring
15	500455 1 Upper Valve Piston
16	401946 1 Seal, Main Valve
18	091208 1 *O* Ring, Lower Valve Piston
19	401950 1 *O* Ring, Lower Valve Piston
20	500456 1 Lower Valve Piston

401933 Piston Assembly (5325) 401934 Piston Assembly (5350)

Includes	
25	091861 1 Nut
26	092116 1 Washer
27	092971 1 *O* Ring
28	401956 1 Piston
29	401904 1 Driver Blade (5325)
	401905 1 Driver Blade (5350)

402408 Trigger Assembly (All Models)

Includes	
50	005849 1 Roll Pin
51	405144 1 Trigger
52	405147 1 Lever

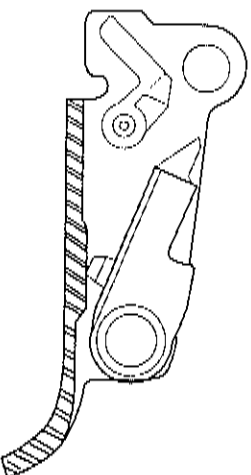
403847 Magazine Assembly (5325) 403849 Magazine Assembly (5350)

Includes	
1	013625 2 Socket Head Capscrew, #8 - 32 x 1/2"
2	401955 1 Flat Washer, #8
74	401979 1 Magazine Cover
75	401978 1 Spring, Upper Work Contacting Element
76	401977 1 Upper Work Contacting Element
77	402010 2 Bushing
78	091363 3 Flexloc Thin Nut
79	403581 1 Magazine, Left and Right (5325)
	403733 1 Magazine, Left and Right (5350)
83	401966 1 Follower Assembly
86	401965 1 Drum, Negator
87	401964 1 Spring, Negator
88	403042 1 Spring Cover
89	008731 1 Socket Head Capscrew, #10 - 24 x 3/4"
90	404045 1 Socket Head Capscrew, #8 - 32 x 1 1/8"
91	403738 1 Pin, Magazine
92	403739 1 Spring, Magazine Pin
93	023766 1 Retainer Ring
94	090971 1 Socket Head Capscrew, #8 - 32 x 7/8"
95	401961 1 Channel
97	403740 1 Spacer, Magazine
99	401974 4 Screw
100	404046 1 Wear Plate Kit
101	016343 1 Socket Head Capscrew, #8 - 32 x 1 1/4"

ACCESSORIES

Sequential Operating Kit

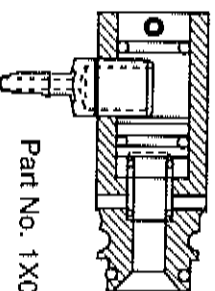
This special attachment is designed for sequential operation (stops "contact" firing). The operator must depress and hold the work contacting element against the work surface before pulling the trigger. This sequence must be repeated each time the tool drives a fastener.



Part No. 406006

Remote Fire Valve

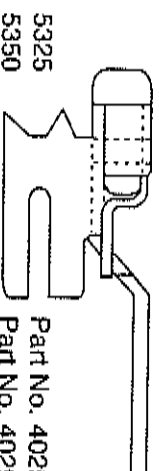
This valve via a positive air signal allows the machine-mounted tool to be operated from an automatic air valve or foot pedal system.



Part No. 1X0713

No Mar Work Contacting Element

For decking and siding applications where the normal work contacting element will mar the surface. (Replacement rubber tip, Part No. 403369)



5325
5350

Part No. 402508
Part No. 402995

Ring Plex Work Contacting Element

Allows conversion of a standard strip nailer into a Ring Plex strip nailer

5325
5350

Part No. 1X1219
Part No. 1X1218

Lubricants

Lubricating Oil 8 oz.
Lubricating Oil with Antifreeze
Chemplex 710 Lubricant 1 lb.
Chemplex 710 Lubricant 5 gram tube

Part No. 219026
Part No. 219090
Part No. 403734
Part No. 219188

Degreaser Cleaner

Ideal Cleaner for all Paslode® Tools

Part No. 219086

Safety Glasses

Clear
Tinted

Part No. 402510
Part No. 402512